



[Go to Product page](#)

Datasheet for ABIN7142833
anti-RPL7L1 antibody (AA 1-246)

1 Image

Overview

Quantity:	100 µg
Target:	RPL7L1
Binding Specificity:	AA 1-246
Reactivity:	Human
Host:	Rabbit
Clonality:	Polyclonal
Conjugate:	This RPL7L1 antibody is un-conjugated
Application:	ELISA, Immunohistochemistry (IHC)

Product Details

Immunogen:	Recombinant Human 60S ribosomal protein L7-like 1 protein (1-246AA)
Isotype:	IgG
Cross-Reactivity:	Human
Purification:	>95%, Protein G purified

Target Details

Target:	RPL7L1
Alternative Name:	RPL7L1 (RPL7L1 Products)
Background:	Background: cytosolic large ribosomal subunit, poly(A) RNA binding, structural constituent of ribosome, cytoplasmic translation, maturation of LSU-rRNA from tricistronic rRNA transcript

Target Details

(SSU-rRNA, 5.8S rRNA, LSU-rRNA)

Aliases: RPL7L1 antibody, 60S ribosomal protein L7-like 1 antibody, Large ribosomal subunit protein uL30-like 1 antibody

UniProt: [Q6DK11](#)

Application Details

Application Notes: Recommended dilution: IHC:1:20-1:200,

Restrictions: For Research Use only

Handling

Format: Liquid

Buffer: Preservative: 0.03 % Proclin 300
Constituents: 50 % Glycerol, 0.01M PBS, PH 7.4

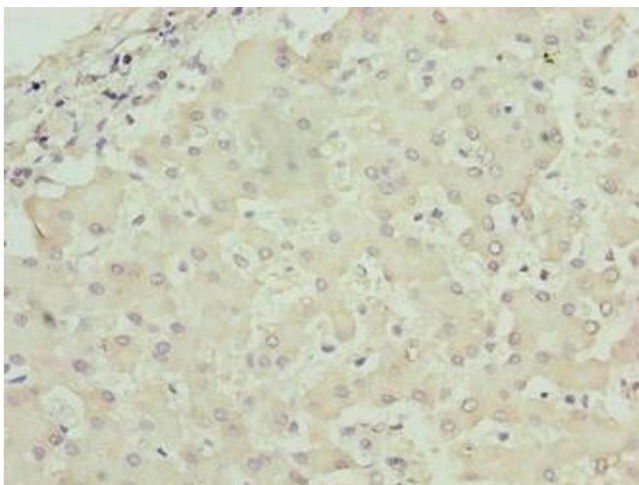
Preservative: ProClin

Precaution of Use: This product contains ProClin: a POISONOUS AND HAZARDOUS SUBSTANCE which should be handled by trained staff only.

Storage: -20 °C,-80 °C

Storage Comment: Upon receipt, store at -20°C or -80°C. Avoid repeated freeze.

Images



Immunohistochemistry

Image 1. Immunohistochemistry of paraffin-embedded human liver tissue using ABIN7142833 at dilution of 1:100