

Datasheet for ABIN7142837
anti-RPL7A antibody (AA 2-138)[Go to Product page](#)

2 Images

Overview

Quantity:	100 µg
Target:	RPL7A
Binding Specificity:	AA 2-138
Reactivity:	Human
Host:	Rabbit
Clonality:	Polyclonal
Conjugate:	This RPL7A antibody is un-conjugated
Application:	Western Blotting (WB), ELISA, Immunohistochemistry (IHC)

Product Details

Immunogen:	Recombinant Human 60S ribosomal protein L7a protein (2-138AA)
Isotype:	IgG
Cross-Reactivity:	Human, Mouse
Purification:	>95%, Protein G purified

Target Details

Target:	RPL7A
Alternative Name:	RPL7A (RPL7A Products)
Background:	Background: cytoplasm, cytosol, cytosolic large ribosomal subunit, extracellular exosome, focal adhesion, membrane, nucleolus, nucleus, polysomal ribosome, cadherin binding

Target Details

Aliases: 60S ribosomal protein L7a antibody, L7A antibody, MGC103146 antibody, PLA X polypeptide antibody, PLA-X polypeptide antibody, ribosomal protein L7a antibody, RL7A_HUMAN antibody, RP23-414L19.4 antibody, RPL7A antibody, SURF 3 antibody, SURF-3 antibody, SURF3 antibody, surfeit 3 antibody, Surfeit locus protein 3 antibody, Thyroid hormone receptor uncoupling protein antibody, TRUP antibody

UniProt: [P62424](#)

Application Details

Application Notes: Recommended dilution: WB:1:500-1:5000, IHC:1:200-1:500,

Restrictions: For Research Use only

Handling

Format: Liquid

Buffer: Preservative: 0.03 % Proclin 300
Constituents: 50 % Glycerol, 0.01M PBS, pH 7.4

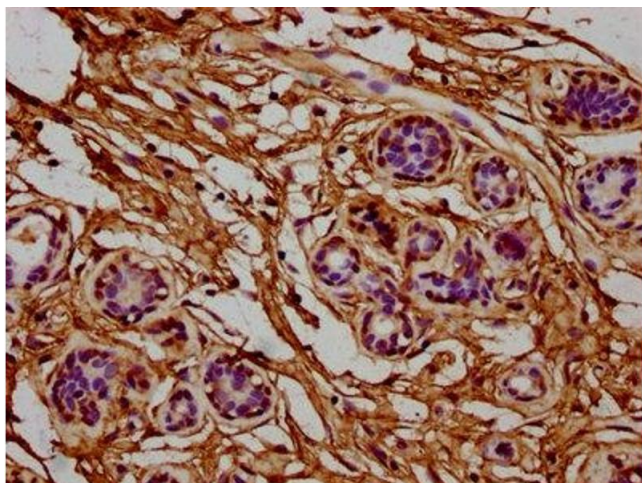
Preservative: ProClin

Precaution of Use: This product contains ProClin: a POISONOUS AND HAZARDOUS SUBSTANCE which should be handled by trained staff only.

Storage: -20 °C,-80 °C

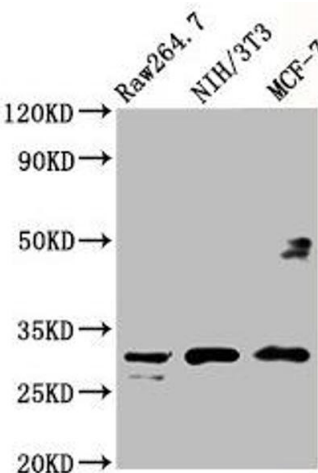
Storage Comment: Upon receipt, store at -20°C or -80°C. Avoid repeated freeze.

Images



Immunohistochemistry

Image 1. IHC image of ABIN7142837 diluted at 1:400 and staining in paraffin-embedded human breast cancer performed on a Leica Bond™ system. After dewaxing and hydration, antigen retrieval was mediated by high pressure in a citrate buffer (pH 6.0). Section was blocked with 10% normal goat serum 30min at RT. Then primary antibody (1% BSA) was incubated at 4°C overnight. The primary is detected by a biotinylated secondary antibody and



visualized using an HRP conjugated SP system.

Western Blotting

Image 2. Western Blot Positive WB detected in: RAW264.7 whole cell lysate, NIH/3T3 whole cell lysate, MCF-7 whole cell lysate All lanes: RPL7A antibody at 5 µg/mL Secondary Goat polyclonal to rabbit IgG at 1/50000 dilution Predicted band size: 30 kDa Observed band size: 30 kDa