

Datasheet for ABIN7142866
anti-MMP2 antibody (AA 445-660)[Go to Product page](#)

3 Images

Overview

Quantity:	100 µg
Target:	MMP2
Binding Specificity:	AA 445-660
Reactivity:	Human
Host:	Rabbit
Clonality:	Polyclonal
Conjugate:	This MMP2 antibody is un-conjugated
Application:	Immunohistochemistry (IHC), ELISA, Immunofluorescence (IF)

Product Details

Immunogen:	Recombinant Human 72 kDa type IV collagenase protein (445-660AA)
Isotype:	IgG
Cross-Reactivity:	Human
Purification:	>95%, Protein G purified

Target Details

Target:	MMP2
Alternative Name:	MMP2 (MMP2 Products)
Background:	Background: Ubiquitous metalloproteinase that is involved in diverse functions such as remodeling of the vasculature, angiogenesis, tissue repair, tumor invasion, inflammation, and

Target Details

atherosclerotic plaque rupture. As well as degrading extracellular matrix proteins, can also act on several nonmatrix proteins such as big endothelial 1 and beta-type CGRP promoting vasoconstriction. Also cleaves KISS at a Gly-I-Leu bond. Appears to have a role in myocardial cell death pathways. Contributes to myocardial oxidative stress by regulating the activity of GSK3beta. Cleaves GSK3beta in vitro. Involved in the formation of the fibrovascular tissues in association with MMP14.

Aliases: 72 kDa gelatinase antibody, 72kD type IV collagenase antibody, CLG 4 antibody, CLG 4A antibody, CLG4 antibody, CLG4A antibody, Collagenase Type 4 alpha antibody, Collagenase type IV A antibody, Gelatinase A antibody, Gelatinase alpha antibody, Gelatinase neutrophil antibody, Matrix metalloproteinase 2 gelatinase A 72 kDa gelatinase 72 kDa type IV collagenase antibody, Matrix metalloproteinase 2 (gelatinase A, 72 kDa gelatinase, 72 kDa type IV collagenase) antibody, Matrix Metalloproteinase 2 antibody, Matrix metalloproteinase II antibody, Matrix metalloproteinase-2 antibody, MMP 2 antibody, MMP II antibody, MMP-2 antibody, MMP2 antibody, MMP2_HUMAN antibody, MONA antibody, Neutrophil gelatinase antibody, PEX antibody, TBE 1 antibody, TBE-1 antibody

UniProt: [P08253](#)

Pathways: [Activation of Innate immune Response](#)

Application Details

Application Notes: Recommended dilution: IHC:1:20-1:200, IF:1:50-1:200,

Restrictions: For Research Use only

Handling

Format: Liquid

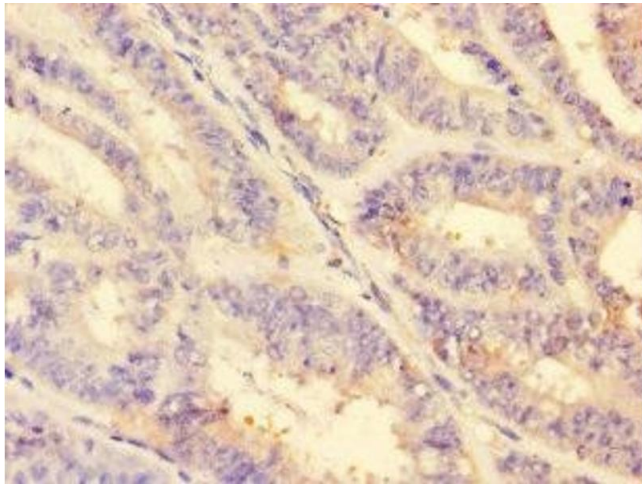
Buffer: Preservative: 0.03 % Proclin 300
Constituents: 50 % Glycerol, 0.01M PBS, PH 7.4

Preservative: ProClin

Precaution of Use: This product contains ProClin: a POISONOUS AND HAZARDOUS SUBSTANCE which should be handled by trained staff only.

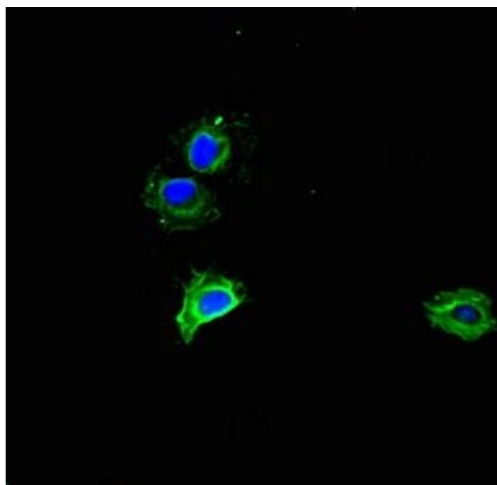
Storage: -20 °C,-80 °C

Storage Comment: Upon receipt, store at -20°C or -80°C. Avoid repeated freeze.



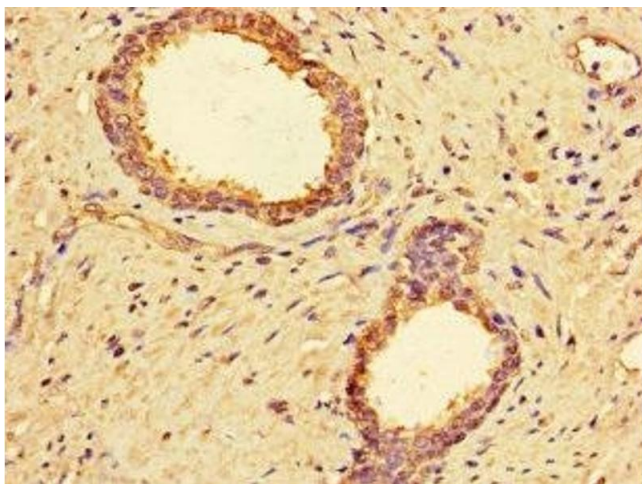
Immunohistochemistry

Image 1. Immunohistochemistry of paraffin-embedded human endometrial cancer using ABIN7142866 at dilution of 1:100



Immunofluorescence

Image 2. Immunofluorescent analysis of HeLa cells using ABIN7142866 at dilution of 1:100 and Alexa Fluor 488-conjugated AffiniPure Goat Anti-Rabbit IgG(H+L)



Immunohistochemistry

Image 3. Immunohistochemistry of paraffin-embedded human prostate cancer using ABIN7142866 at dilution of 1:100