

Datasheet for ABIN7142902
anti-AKAP1 antibody (AA 413-662)

3 Images

[Go to Product page](#)

Overview

| | |
|----------------------|--|
| Quantity: | 100 µL |
| Target: | AKAP1 |
| Binding Specificity: | AA 413-662 |
| Reactivity: | Human |
| Host: | Rabbit |
| Clonality: | Polyclonal |
| Conjugate: | This AKAP1 antibody is un-conjugated |
| Application: | Western Blotting (WB), Immunohistochemistry (IHC), ELISA |

Product Details

| | |
|-------------------|---|
| Immunogen: | Recombinant Human A-kinase anchor protein 10, mitochondrial protein (413-662AA) |
| Isotype: | IgG |
| Cross-Reactivity: | Human |
| Purification: | Antigen Affinity Purified |

Target Details

| | |
|-------------------|---|
| Target: | AKAP1 |
| Alternative Name: | AKAP1 (AKAP1 Products) |
| Background: | Background: Differentially targeted protein that binds to type I and II regulatory subunits of protein kinase A and anchors them to the mitochondria or the plasma membrane. Although the |

Target Details

physiological relevance between PKA and AKAPS with mitochondria is not fully understood, one idea is that BAD, a proapoptotic member, is phosphorylated and inactivated by mitochondria-anchored PKA. It cannot be excluded too that it may facilitate PKA as well as G protein signal transduction, by acting as an adapter for assembling multiprotein complexes. With its RGS domain, it could lead to the interaction to G-alpha proteins, providing a link between the signaling machinery and the downstream kinase (By similarity).

Aliases: AKAP10A-kinase anchor protein 10 antibody, mitochondrial antibody, AKAP-10 antibody, Dual specificity A kinase-anchoring protein 2 antibody, D-AKAP-2 antibody, Protein kinase A-anchoring protein 10 antibody, PRKA10 antibody

UniProt: [O43572](#)

Pathways: [Synaptic Membrane](#)

Application Details

Application Notes: Recommended dilution: WB:1:200-1:1000, IHC:1:20-1:200,

Restrictions: For Research Use only

Handling

Format: Liquid

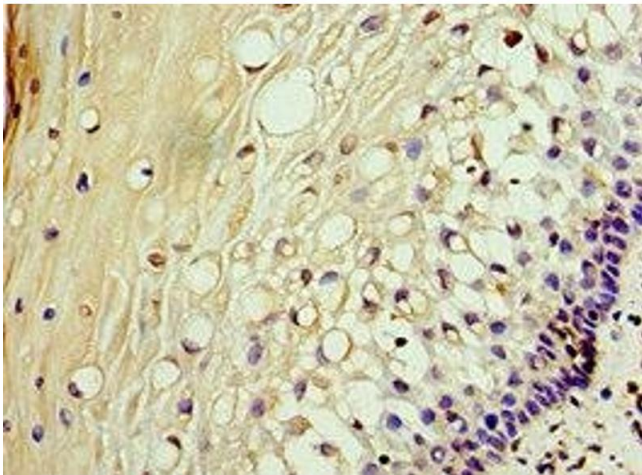
Buffer: PBS with 0.02 % sodium azide, 50 % glycerol, pH 7.3.

Preservative: Sodium azide

Precaution of Use: This product contains Sodium azide: a POISONOUS AND HAZARDOUS SUBSTANCE which should be handled by trained staff only.

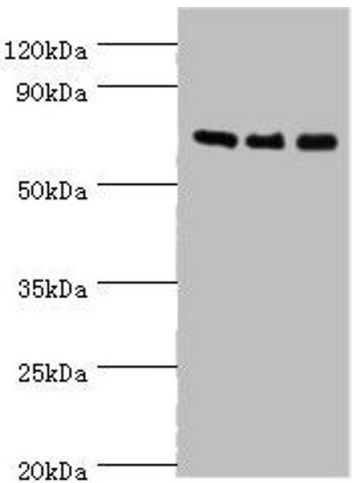
Storage: -20 °C,-80 °C

Storage Comment: Upon receipt, store at -20°C or -80°C. Avoid repeated freeze.



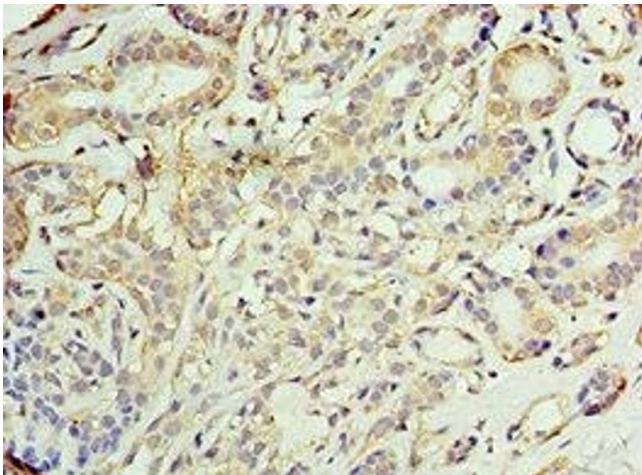
Immunohistochemistry

Image 1. Immunohistochemistry of paraffin-embedded human cervical cancer using ABIN7142902 at dilution of 1:100



Western Blotting

Image 2. Western blot All lanes: AKAP10 antibody at 7 μ g/mL Lane 1: 293T whole cell lysate Lane 2: Hela whole cell lysate Lane 3: HepG2 whole cell lysate Secondary Goat polyclonal to rabbit IgG at 1/10000 dilution Predicted band size: 74 kDa Observed band size: 74 kDa



Immunohistochemistry

Image 3. Immunohistochemistry of paraffin-embedded human breast cancer using ABIN7142902 at dilution of 1:100