



[Go to Product page](#)

Datasheet for ABIN7142904  
**anti-AKAP13 antibody (AA 1-150)**

2 Images

Overview

|                      |                                       |
|----------------------|---------------------------------------|
| Quantity:            | 100 µL                                |
| Target:              | AKAP13                                |
| Binding Specificity: | AA 1-150                              |
| Reactivity:          | Human                                 |
| Host:                | Rabbit                                |
| Clonality:           | Polyclonal                            |
| Conjugate:           | This AKAP13 antibody is un-conjugated |
| Application:         | Immunohistochemistry (IHC), ELISA     |

Product Details

|                   |  |
|-------------------|--|
| Immunogen:        | Recombinant Human A-kinase anchor protein 13 protein (1-150AA) |
| Isotype:          | IgG  |
| Cross-Reactivity: | Human  |
| Purification:     | Antigen Affinity Purified                                      |

Target Details

|                   |   |
|-------------------|---|
| Target:           | AKAP13  |
| Alternative Name: | AKAP13 ( <a href="#">AKAP13 Products</a> )  |
| Background:       | Background: Anchors cAMP-dependent protein kinase (PKA) and acts as an adapter protein to selectively couple G alpha-13 and Rho. Augments gene activation by the estrogen receptor in |

## Target Details

---

an element-specific and ligand-dependent manner. Activates estrogen receptor beta by a p38 MAPK-dependent pathway. Stimulates exchange activity on Rho proteins in vitro, but not on CDC42, Ras or Rac and may bind calcium ions.

Aliases: A kinase (PRKA) anchor protein 13 antibody, A kinase anchor protein 13 antibody, A kinase anchoring protein antibody, A-kinase anchor protein 13 antibody, AKAP 13 antibody, AKAP Lbc antibody, AKAP-13 antibody, AKAP-Lbc antibody, AKAP13 antibody, AKP13\_HUMAN antibody, ARHGEF13 antibody, Breast cancer nuclear receptor binding auxiliary protein antibody, Breast cancer nuclear receptor-binding auxiliary protein antibody, BRX antibody, c lbc antibody, FLJ11952 antibody, FLJ43341 antibody, Guanine nucleotide exchange factor Lbc antibody, HA 3 antibody, HA3 antibody, Ht 31 antibody, Ht31 antibody, Human thyroid anchoring protein 31 antibody, Human thyroid-anchoring protein 31 antibody, LBC antibody, LBC oncogene antibody, Lymphoid blast crisis oncogene antibody, Non oncogenic Rho GTPase specific GTP exchange factor antibody, Non-oncogenic Rho GTPase-specific GTP exchange factor antibody, p47 antibody, Protein kinase A anchoring protein 13 antibody, Protein kinase A-anchoring protein 13 antibody, PROTO LB antibody, PROTO LBC antibody

---

UniProt: [Q12802](#)

---

Pathways: [Neurotrophin Signaling Pathway](#)

## Application Details

---

Application Notes: Recommended dilution: IHC:1:20-1:200,

---

Restrictions: For Research Use only

## Handling

---

Format: Liquid

---

Buffer: PBS with 0.02 % sodium azide, 50 % glycerol, pH 7.3.

---

Preservative: Sodium azide

---

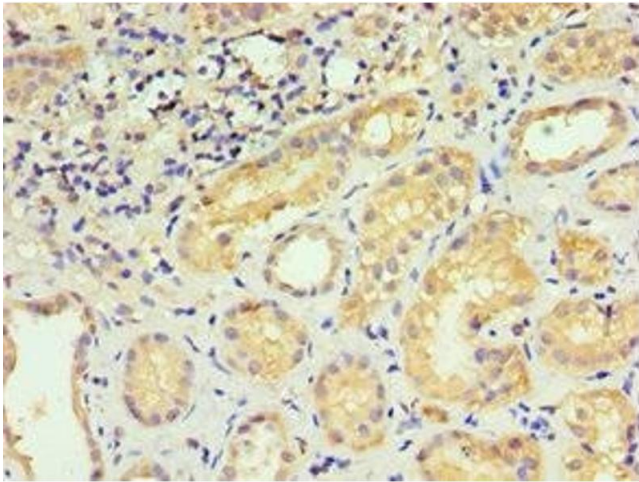
Precaution of Use: This product contains Sodium azide: a POISONOUS AND HAZARDOUS SUBSTANCE which should be handled by trained staff only.

---

Storage: -20 °C,-80 °C

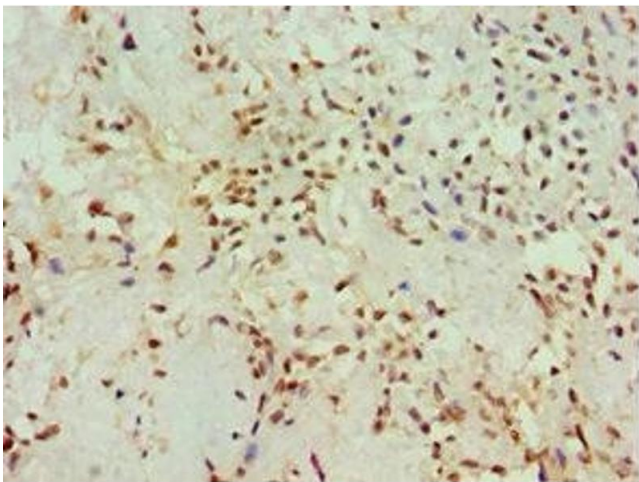
---

Storage Comment: Upon receipt, store at -20°C or -80°C. Avoid repeated freeze.



#### Immunohistochemistry

**Image 1.** Immunohistochemistry of paraffin-embedded human kidney tissue using ABIN7142904 at dilution of 1:100



#### Immunohistochemistry

**Image 2.** Immunohistochemistry of paraffin-embedded human breast cancer using ABIN7142904 at dilution of 1:100