

Datasheet for ABIN7142959
anti-CHRNB1 antibody (AA 24-244)



[Go to Product page](#)

4 Images

Overview

Quantity:	100 µg
Target:	CHRNB1
Binding Specificity:	AA 24-244
Reactivity:	Human
Host:	Rabbit
Clonality:	Polyclonal
Conjugate:	This CHRNB1 antibody is un-conjugated
Application:	Western Blotting (WB), ELISA, Immunohistochemistry (IHC), Immunofluorescence (IF)

Product Details

Immunogen:	Recombinant Human Acetylcholine receptor subunit beta protein (24-244AA)
Isotype:	IgG
Cross-Reactivity:	Human
Purification:	>95%, Protein G purified

Target Details

Target:	CHRNB1
Alternative Name:	CHRNB1 (CHRNB1 Products)
Background:	Background: After binding acetylcholine, the AChR responds by an extensive change in conformation that affects all subunits and leads to opening of an ion-conducting channel

Target Details

across the plasma membrane.

Aliases: Acetylcholine receptor protein beta chain precursor antibody, Acetylcholine receptor subunit beta antibody, ACHB_HUMAN antibody, AChR antibody, ACHRB antibody, Cholinergic receptor nicotinic beta polypeptide 1 (muscle) antibody, Chrn1 antibody, CHRN1 antibody, chrn1 antibody, CMS1D antibody, CMS2A antibody, Nicotinic acetylcholine receptor beta subunit precursor antibody, SCCMS antibody

UniProt: [P11230](#)

Pathways: [Synaptic Membrane](#)

Application Details

Application Notes: Recommended dilution: WB:1:500-1:5000, IHC:1:20-1:200, IF:1:50-1:200,

Restrictions: For Research Use only

Handling

Format: Liquid

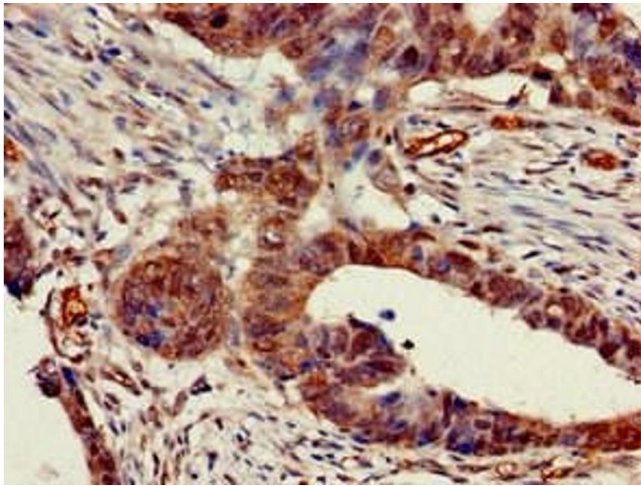
Buffer: Preservative: 0.03 % Proclin 300
Constituents: 50 % Glycerol, 0.01M PBS, pH 7.4

Preservative: ProClin

Precaution of Use: This product contains ProClin: a POISONOUS AND HAZARDOUS SUBSTANCE which should be handled by trained staff only.

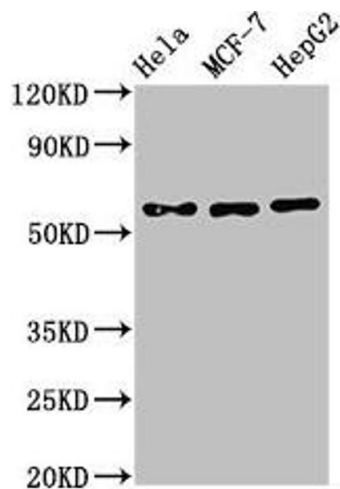
Storage: -20 °C,-80 °C

Storage Comment: Upon receipt, store at -20°C or -80°C. Avoid repeated freeze.



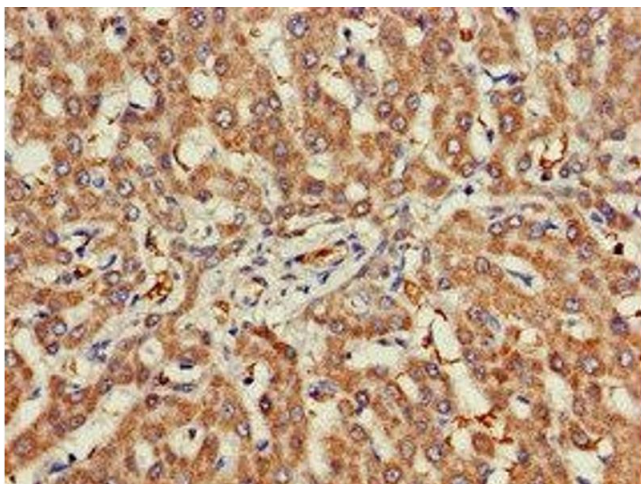
Immunohistochemistry

Image 1. Immunohistochemistry of paraffin-embedded human colon cancer using ABIN7142959 at dilution of 1:100



Western Blotting

Image 2. Western Blot Positive WB detected in: HeLa whole cell lysate, MCF-7 whole cell lysate, HepG2 whole cell lysate
All lanes: CHRNB1 antibody at 3 µg/mL Secondary Goat polyclonal to rabbit IgG at 1/50000 dilution Predicted band size: 57, 50 kDa Observed band size: 57 kDa



Immunohistochemistry

Image 3. Immunohistochemistry of paraffin-embedded human liver cancer using ABIN7142959 at dilution of 1:100

Please check the [product details page](#) for more images. Overall 4 images are available for ABIN7142959.