

Datasheet for ABIN7143011
anti-PHAP1 antibody (AA 1-170)

3 Images

[Go to Product page](#)

Overview

Quantity:	100 µL
Target:	PHAP1 (ANP32A)
Binding Specificity:	AA 1-170
Reactivity:	Human
Host:	Rabbit
Clonality:	Polyclonal
Conjugate:	This PHAP1 antibody is un-conjugated
Application:	Immunohistochemistry (IHC), ELISA, Immunofluorescence (IF)

Product Details

Immunogen:	Recombinant Human Acidic leucine-rich nuclear phosphoprotein 32 family member A protein (1-170AA)
Isotype:	IgG
Cross-Reactivity:	Human
Purification:	Antigen Affinity Purified

Target Details

Target:	PHAP1 (ANP32A)
Alternative Name:	ANP32A (ANP32A Products)
Background:	Background: Implicated in a number of cellular processes, including proliferation, differentiation,

Target Details

caspase-dependent and caspase-independent apoptosis, suppression of transformation (tumor suppressor), inhibition of protein phosphatase 2A, regulation of mRNA trafficking and stability in association with ELAVL1, and inhibition of acetyltransferases as part of the INHAT (inhibitor of histone acetyltransferases) complex. Plays a role in E4F1-mediated transcriptional repression.

Aliases: acidic (leucine-rich) nuclear phosphoprotein 32 family, member A antibody, Acidic leucine-rich nuclear phosphoprotein 32 family member A antibody, Acidic nuclear phosphoprotein 32 family member A antibody, Acidic nuclear phosphoprotein pp32 antibody, AN32A_HUMAN antibody, ANP32A antibody, C15orf1 antibody, Cerebellar leucine rich acidic nuclear protein antibody, Hepatopoietin Cn antibody, HPPCn antibody, I1PP2A antibody, Inhibitor 1 of protein phosphatase 2A antibody, inhibitor-1 of protein phosphatase-2A antibody, Lanp antibody, Leucine rich acidic nuclear protein antibody, Leucine-rich acidic nuclear protein antibody, MAPM antibody, Mapmodulin antibody, MGC119787 antibody, MGC150373 antibody, PHAPI antibody, Potent heat stable protein phosphatase 2A inhibitor I1PP2A antibody, Potent heat-stable protein phosphatase 2A inhibitor I1PP2A antibody, PP32 antibody, Putative HLA DR associated protein I antibody, Putative HLA-DR-associated protein I antibody, Putative human HLA class II associated protein I antibody, Putative human HLA class II-associated protein antibody

UniProt: [P39687](#)

Application Details

Application Notes: Recommended dilution: IHC:1:20-1:200, IF:1:50-1:200,

Restrictions: For Research Use only

Handling

Format: Liquid

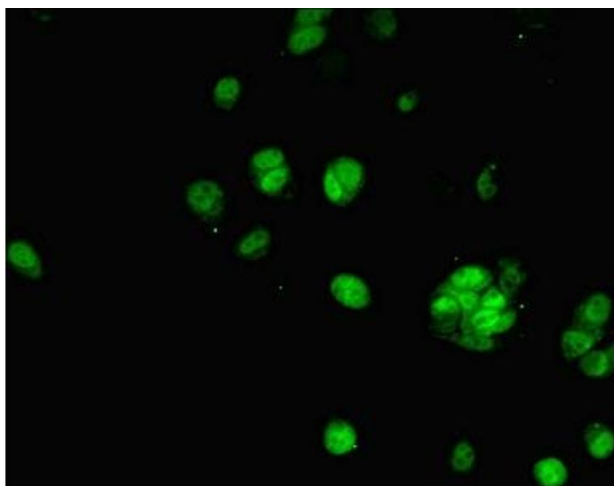
Buffer: PBS with 0.02 % sodium azide, 50 % glycerol, pH 7.3.

Preservative: Sodium azide

Precaution of Use: This product contains Sodium azide: a POISONOUS AND HAZARDOUS SUBSTANCE which should be handled by trained staff only.

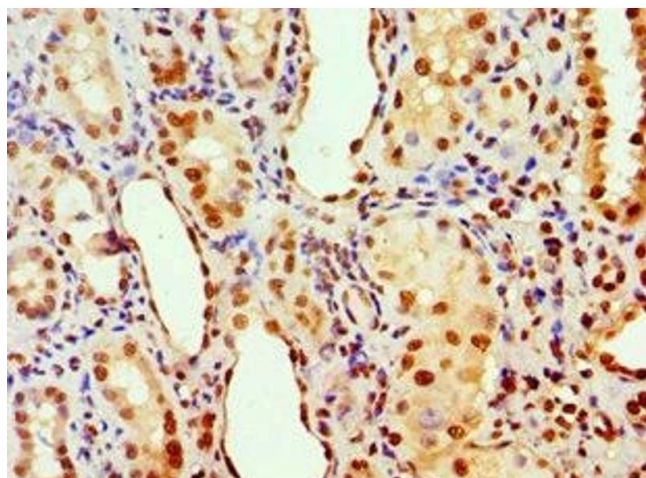
Storage: -20 °C, -80 °C

Storage Comment: Upon receipt, store at -20°C or -80°C. Avoid repeated freeze.



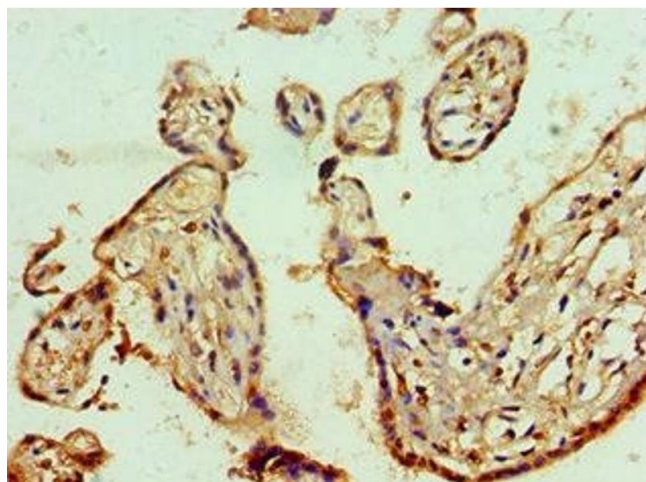
Immunofluorescence

Image 1. Immunofluorescent analysis of MCF-7 cells using ABIN7143011 at dilution of 1:100 and Alexa Fluor 488-conjugated AffiniPure Goat Anti-Rabbit IgG(H+L)



Immunohistochemistry

Image 2. Immunohistochemistry of paraffin-embedded human kidney tissue using ABIN7143011 at dilution of 1:100



Immunohistochemistry

Image 3. Immunohistochemistry of paraffin-embedded human placenta tissue using ABIN7143011 at dilution of 1:100