

Datasheet for ABIN7143016  
**anti-CHIA antibody (AA 1-368)**[Go to Product page](#)

## 3 Images

## Overview

Quantity:	100 µL
Target:	CHIA
Binding Specificity:	AA 1-368
Reactivity:	Human
Host:	Rabbit
Clonality:	Polyclonal
Conjugate:	This CHIA antibody is un-conjugated
Application:	Western Blotting (WB), ELISA, Immunohistochemistry (IHC)

## Product Details

Immunogen:	Recombinant Human Acidic mammalian chitinase protein (1-368AA)
Isotype:	IgG
Cross-Reactivity:	Human, Mouse
Purification:	Antigen Affinity Purified

## Target Details

Target:	CHIA
Alternative Name:	CHIA ( <a href="#">CHIA Products</a> )
Background:	Background: Degrades chitin and chitotriose. May participate in the defense against nematodes, fungi and other pathogens. Plays a role in T-helper cell type 2 (Th2) immune

## Target Details

response. Contributes to the response to IL-13 and inflammation in response to IL-13. Stimulates chemokine production by pulmonary epithelial cells. Protects lung epithelial cells against apoptosis and promotes phosphorylation of AKT1. Its function in the inflammatory response and in protecting cells against apoptosis is inhibited by allosamidin, suggesting that the function of this protein depends on carbohydrate binding.

Aliases: Acidic mammalian chitinase [Precursor] antibody, Acidic mammalian chitinase antibody, AMCase antibody, Chia antibody, CHIA\_HUMAN antibody, CHIT2 antibody, chitinase, acidic antibody, DKFZp313J1722 antibody, ECF L antibody, Lung specific protein TSA1902 antibody, Lung-specific protein TSA1902 antibody, RP5 1125M8.1 antibody, TSA1902 antibody

UniProt: [Q9BZP6](#)

## Application Details

Application Notes: Recommended dilution: WB:1:1000-1:5000, IHC:1:20-1:200,

Restrictions: For Research Use only

## Handling

Format: Liquid

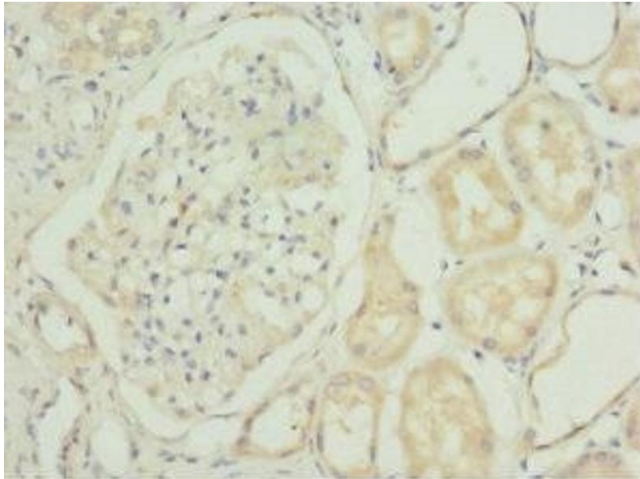
Buffer: PBS with 0.02 % sodium azide, 50 % glycerol, pH 7.3.

Preservative: Sodium azide

Precaution of Use: This product contains Sodium azide: a POISONOUS AND HAZARDOUS SUBSTANCE which should be handled by trained staff only.

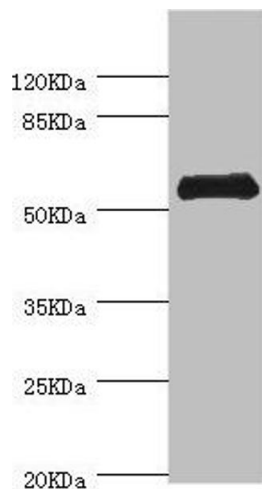
Storage: -20 °C, -80 °C

Storage Comment: Upon receipt, store at -20°C or -80°C. Avoid repeated freeze.



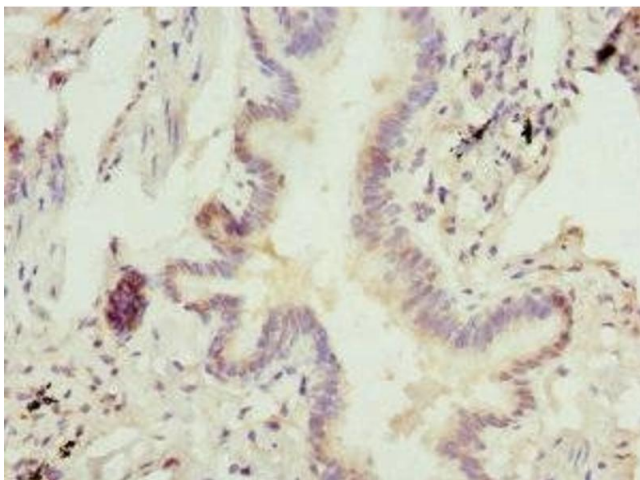
#### Immunohistochemistry

**Image 1.** Immunohistochemistry of paraffin-embedded human kidney tissue using ABIN7143016 at dilution of 1:100



#### Western Blotting

**Image 2.** Western blot All lanes: CHIA antibody at 0.74  $\mu$ g/mL + Mouse stomach tissue Secondary Goat polyclonal to rabbit IgG at 1/10000 dilution Predicted band size: 53, 41, 34 kDa Observed band size: 53 kDa



#### Immunohistochemistry

**Image 3.** Immunohistochemistry of paraffin-embedded human lung tissue using ABIN7143016 at dilution of 1:100