



Datasheet for ABIN7143053
anti-Actin-Like 6B antibody (AA 1-280)



[Go to Product page](#)

3 Images

Overview

Quantity:	100 µL
Target:	Actin-Like 6B (ACTL6B)
Binding Specificity:	AA 1-280
Reactivity:	Human
Host:	Rabbit
Clonality:	Polyclonal
Conjugate:	This Actin-Like 6B antibody is un-conjugated
Application:	Western Blotting (WB), Immunohistochemistry (IHC), ELISA

Product Details

Immunogen:	Recombinant Human Actin-like protein 6B protein (1-280AA)
Isotype:	IgG
Cross-Reactivity:	Human
Purification:	Antigen Affinity Purified

Target Details

Target:	Actin-Like 6B (ACTL6B)
Alternative Name:	ACTL6B (ACTL6B Products)
Background:	Background: Belongs to the chromatin remodeling brain-specific BAF (bBAF) complex, as such plays a role in remodeling mononucleosomes in an ATP-dependent fashion. Belongs to the

Target Details

neuron-specific chromatin remodeling complex (nBAF complex) and is required for postmitotic neural development and dendritic outgrowth. During neural development a switch from a stem/progenitor to a post-mitotic chromatin remodeling mechanism occurs as neurons exit the cell cycle and become committed to their adult state. The transition from proliferating neural stem/progenitor cells to post-mitotic neurons requires a switch in subunit composition of the npBAF and nBAF complexes. As neural progenitors exit mitosis and differentiate into neurons, npBAF complexes which contain ACTL6A/BAF53A and PHF10/BAF45A, are exchanged for homologous alternative ACTL6B/BAF53B and DPF1/BAF45B or DPF3/BAF45C subunits in neuron-specific complexes (nBAF). The npBAF complex is essential for the self-renewal/proliferative capacity of the multipotent neural stem cells. The nBAF complex along with CREST plays a role regulating the activity of genes essential for dendrite growth. ACTL6B/BAF53B is not essential for assembly of the nBAF complex but is required for targeting the complex and CREST to the promoter of genes essential for dendritic growth .

Aliases: 53 kDa BRG1 associated factor B antibody, 53 kDa BRG1-associated factor B antibody, ACL 6B antibody, ACL6B antibody, ACL6B_HUMAN antibody, Actin like 6 antibody, Actin like protein 6B antibody, Actin like protein6B antibody, Actin related protein antibody, Actin related protein Baf53b antibody, actin-like 6B antibody, Actin-like protein 6B antibody, Actin-related protein Baf53b antibody, Actl 6 antibody, ACTL 6B antibody, Actl6 antibody, ACTL6 B antibody, Actl6b antibody, Arp Na antibody, ArpN a antibody, ArpN alpha antibody, ArpNa antibody, ArpNalpha antibody, Baf 53b antibody, BAF53B antibody, BRG1-associated factor 53B antibody

UniProt: [O94805](#)

Application Details

Application Notes: Recommended dilution: WB:1:200-1:1000, IHC:1:20-1:200,

Restrictions: For Research Use only

Handling

Format: Liquid

Buffer: PBS with 0.02 % sodium azide, 50 % glycerol, pH 7.3.

Preservative: Sodium azide

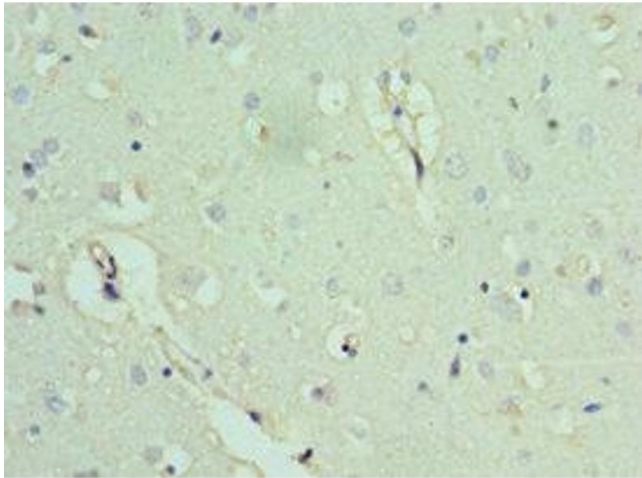
Precaution of Use: This product contains Sodium azide: a POISONOUS AND HAZARDOUS SUBSTANCE which should be handled by trained staff only.

Storage: -20 °C,-80 °C

Handling

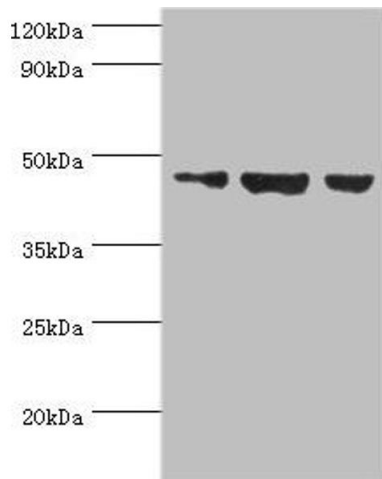
Storage Comment: Upon receipt, store at -20°C or -80°C. Avoid repeated freeze.

Images



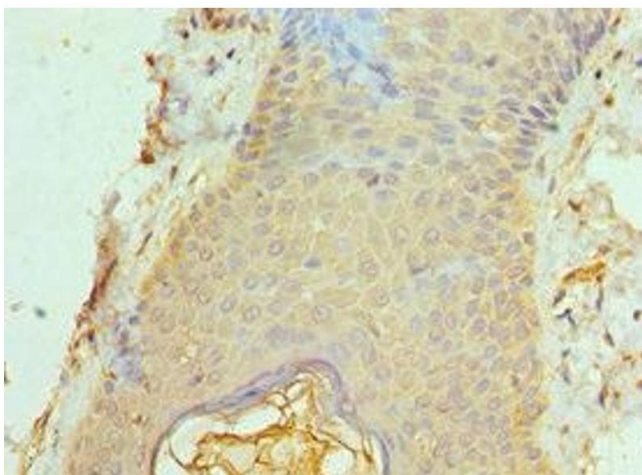
Immunohistochemistry

Image 1. Immunohistochemistry of paraffin-embedded human brain tissue using ABIN7143053 at dilution of 1:100



Western Blotting

Image 2. Western blot All lanes: Actin-like protein 6B antibody at 3 µg/mL Lane 1: Hela whole cell lysate Lane 2: U251 whole cell lysate Lane 3: HepG2 whole cell lysate Secondary Goat polyclonal to rabbit IgG at 1/10000 dilution Predicted band size: 47 kDa Observed band size: 47 kDa



Immunohistochemistry

Image 3. Immunohistochemistry of paraffin-embedded human skin tissue using ABIN7143053 at dilution of 1:100