



Datasheet for ABIN7143055

anti-Actin-Like 7A antibody (AA 1-435)



[Go to Product page](#)

3 Images

Overview

Quantity:	100 µg
Target:	Actin-Like 7A (ACTL7A)
Binding Specificity:	AA 1-435
Reactivity:	Human
Host:	Rabbit
Clonality:	Polyclonal
Conjugate:	This Actin-Like 7A antibody is un-conjugated
Application:	Western Blotting (WB), ELISA, Immunohistochemistry (IHC)

Product Details

Immunogen:	Recombinant Human Actin-like protein 7A protein (1-435AA)
Isotype:	IgG
Cross-Reactivity:	Human, Mouse
Purification:	>95%, Protein G purified

Target Details

Target:	Actin-Like 7A (ACTL7A)
Alternative Name:	ACTL7A (ACTL7A Products)
Background:	Background: Interacts (via N-terminus) with TES (via LIM domain 2). Heterodimer with TES, the heterodimer interacts with ENAH to form a heterotrimer.

Target Details

Aliases: ACTL7AActin-like protein 7A antibody, Actin-like-7-alpha antibody

UniProt: [Q9Y615](#)

Application Details

Application Notes: Recommended dilution: WB:1:1000-1:5000, IHC:1:20-1:200,

Restrictions: For Research Use only

Handling

Format: Liquid

Buffer: Preservative: 0.03 % Proclin 300
Constituents: 50 % Glycerol, 0.01M PBS, PH 7.4

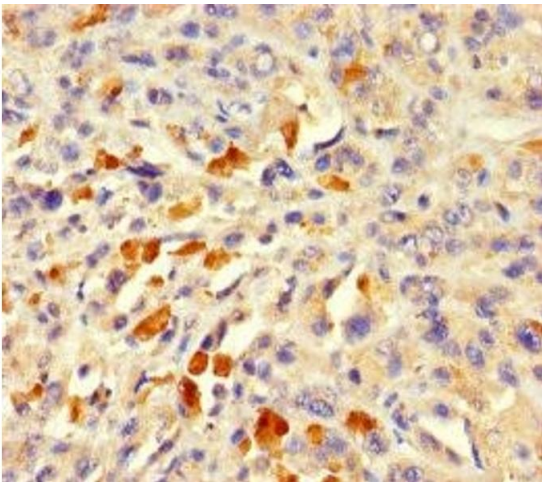
Preservative: ProClin

Precaution of Use: This product contains ProClin: a POISONOUS AND HAZARDOUS SUBSTANCE which should be handled by trained staff only.

Storage: -20 °C,-80 °C

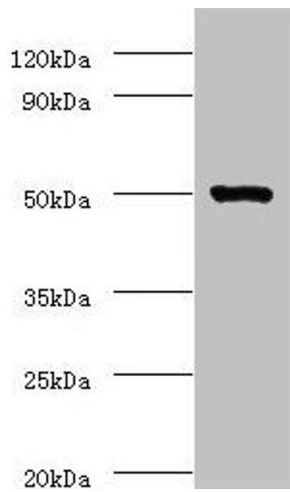
Storage Comment: Upon receipt, store at -20°C or -80°C. Avoid repeated freeze.

Images



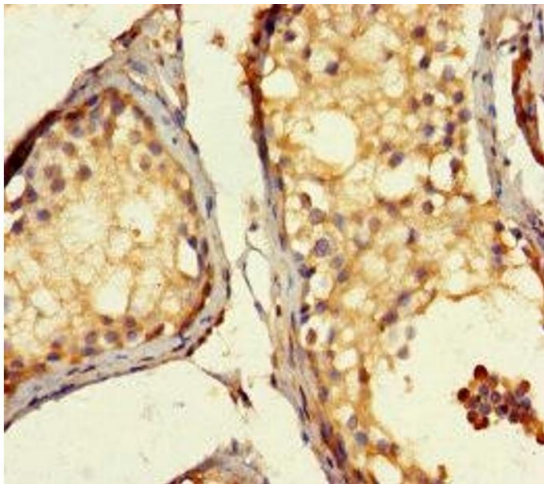
Immunohistochemistry

Image 1. Immunohistochemistry of paraffin-embedded human melanoma using ABIN7143055 at dilution of 1:100



Western Blotting

Image 2. Western blot All lanes: ACTL7A antibody at 2 μ g/mL + Mouse liver tissue Secondary Goat polyclonal to rabbit IgG at 1/10000 dilution Predicted band size: 49 kDa
Observed band size: 49 kDa



Immunohistochemistry

Image 3. Immunohistochemistry of paraffin-embedded human testis tissue using ABIN7143055 at dilution of 1:100