

Datasheet for ABIN7143076
anti-ACTR2 antibody (AA 1-160)[Go to Product page](#)

2 Images

Overview

Quantity:	100 µL
Target:	ACTR2
Binding Specificity:	AA 1-160
Reactivity:	Human
Host:	Rabbit
Clonality:	Polyclonal
Conjugate:	This ACTR2 antibody is un-conjugated
Application:	Western Blotting (WB), Immunohistochemistry (IHC), ELISA

Product Details

Immunogen:	Recombinant Human Actin-related protein 2 protein (1-160AA)
Isotype:	IgG
Cross-Reactivity:	Human, Mouse
Purification:	Antigen Affinity Purified

Target Details

Target:	ACTR2
Alternative Name:	ACTR2 (ACTR2 Products)
Background:	Background: Functions as ATP-binding component of the Arp2/3 complex which is involved in regulation of actin polymerization and together with an activating nucleation-promoting factor

Target Details

(NPF) mediates the formation of branched actin networks. Seems to contact the pointed end of the daughter actin filament.

Aliases: Actin like protein 2 antibody, Actin related protein 2 antibody, Actin-like protein 2 antibody, Actin-related protein 2 antibody, ACTR2 antibody, ARP2 actin related protein 2 homolog (yeast) antibody, ARP2 antibody, ARP2/3 COMPLEX antibody, ARP2_HUMAN antibody, OTTHUMP00000159937 antibody, OTTHUMP00000202270 antibody

UniProt: [P61160](#)

Pathways: [RTK Signaling, Regulation of Actin Filament Polymerization](#)

Application Details

Application Notes: Recommended dilution: WB:1:500-1:1000, IHC:1:20-1:200,

Restrictions: For Research Use only

Handling

Format: Liquid

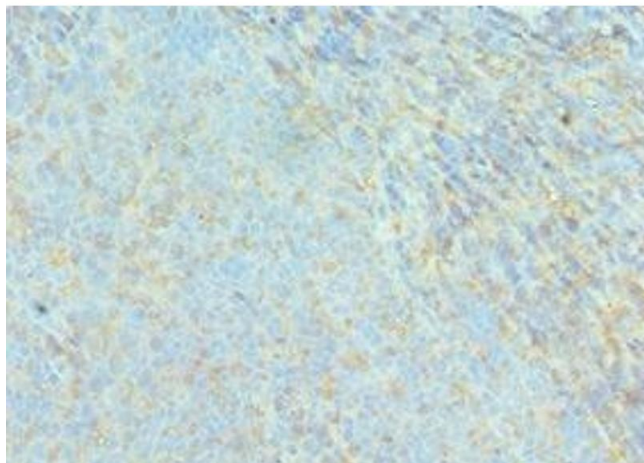
Buffer: PBS with 0.02 % sodium azide, 50 % glycerol, pH 7.3.

Preservative: Sodium azide

Precaution of Use: This product contains Sodium azide: a POISONOUS AND HAZARDOUS SUBSTANCE which should be handled by trained staff only.

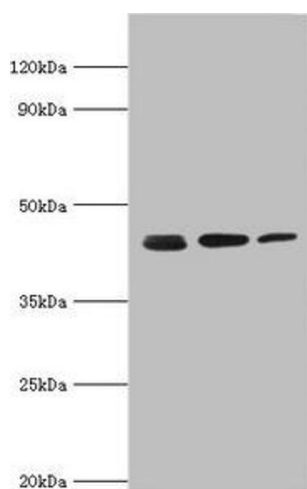
Storage: -20 °C, -80 °C

Storage Comment: Upon receipt, store at -20°C or -80°C. Avoid repeated freeze.



Immunohistochemistry

Image 1. Immunohistochemistry of paraffin-embedded human tonsil tissue using ABIN7143076 at dilution of 1:100



Western Blotting

Image 2. Western blot All lanes: Actin-related protein 2 antibody at 3 µg/mL Lane 1: Mouse spleen tissue Lane 2: Jurkat whole cell lysate Lane 3: MCF-7 whole cell lysate Secondary Goat polyclonal to rabbit IgG at 1/10000 dilution Predicted band size: 45, 46 kDa Observed band size: 45 kDa