



[Go to Product page](#)

Datasheet for ABIN7143148  
**anti-SUB1 antibody (AA 2-127)**

2 Images

Overview

Quantity:	100 µg
Target:	SUB1
Binding Specificity:	AA 2-127
Reactivity:	Human
Host:	Rabbit
Clonality:	Polyclonal
Conjugate:	This SUB1 antibody is un-conjugated
Application:	ELISA, Immunohistochemistry (IHC)

Product Details

Immunogen:	Recombinant Human Activated RNA polymerase II transcriptional coactivator p15 protein (2-127AA)
Isotype:	IgG
Cross-Reactivity:	Human
Purification:	>95%, Protein G purified

Target Details

Target:	SUB1
Alternative Name:	SUB1 ( <a href="#">SUB1 Products</a> )
Background:	Background: General coactivator that functions cooperatively with TAFs and mediates

## Target Details

---

functional interactions between upstream activators and the general transcriptional machinery. May be involved in stabilizing the multiprotein transcription complex. Binds single-stranded DNA. Also binds, in vitro, non-specifically to double-stranded DNA (ds DNA).

Aliases: Activated RNA polymerase II transcriptional coactivator p15 antibody, Interferon related developmental regulator 1 antibody, MGC102747 antibody, p14 antibody, P15 antibody, PC4 antibody, PC4 LSB antibody, Positive cofactor 4 antibody, RPO2TC1 antibody, Sub1 antibody, SUB1 homolog antibody, TCP4\_HUMAN antibody

---

UniProt: [P53999](#)

## Application Details

---

Application Notes: Recommended dilution: IHC:1:20-1:200,

Restrictions: For Research Use only

## Handling

---

Format: Liquid

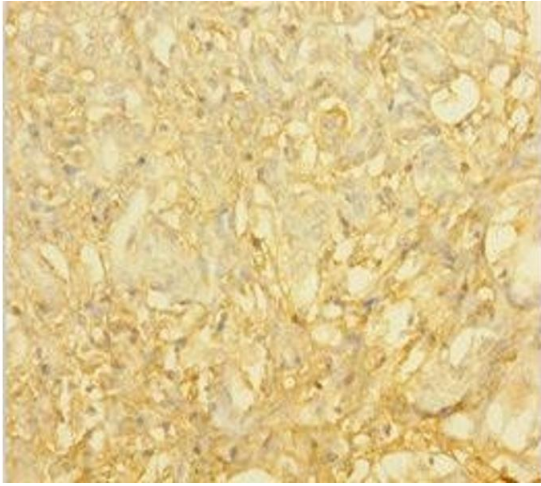
Buffer: Preservative: 0.03 % Proclin 300  
Constituents: 50 % Glycerol, 0.01M PBS, PH 7.4

Preservative: ProClin

Precaution of Use: This product contains ProClin: a POISONOUS AND HAZARDOUS SUBSTANCE which should be handled by trained staff only.

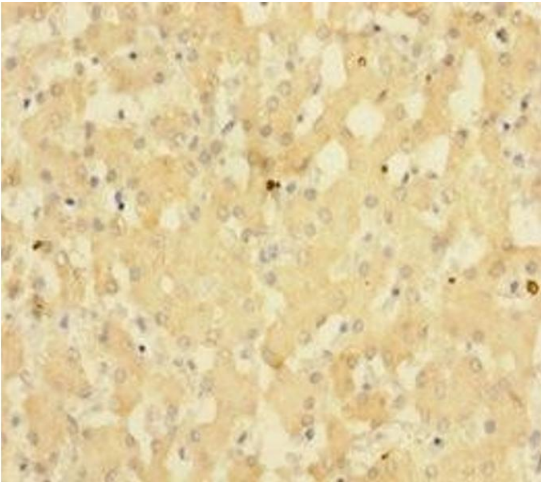
Storage: -20 °C,-80 °C

Storage Comment: Upon receipt, store at -20°C or -80°C. Avoid repeated freeze.



#### Immunohistochemistry

**Image 1.** Immunohistochemistry of paraffin-embedded human pancreatic cancer using ABIN7143148 at dilution of 1:100



#### Immunohistochemistry

**Image 2.** Immunohistochemistry of paraffin-embedded human liver tissue using ABIN7143148 at dilution of 1:100