



[Go to Product page](#)

Datasheet for ABIN7143153
anti-ASCC1 antibody (AA 1-315)

2 Images

Overview

Quantity:	100 µg
Target:	ASCC1
Binding Specificity:	AA 1-315
Reactivity:	Human
Host:	Rabbit
Clonality:	Polyclonal
Conjugate:	This ASCC1 antibody is un-conjugated
Application:	Western Blotting (WB), ELISA, Immunohistochemistry (IHC)

Product Details

Immunogen:	Recombinant Human Activating signal cointegrator 1 complex subunit 1 protein (1-315AA)
Isotype:	IgG
Cross-Reactivity:	Human, Mouse
Purification:	>95%, Protein G purified

Target Details

Target:	ASCC1
Alternative Name:	ASCC1 (ASCC1 Products)
Background:	Background: Enhances NF-kappa-B, SRF and AP1 transactivation. In cells responding to gastrin-activated paracrine signals, it is involved in the induction of SERPINB2 expression by gastrin.

Target Details

Aliases: Activating signal cointegrator 1 complex subunit 1 antibody, ASC-1 complex subunit p50 antibody, ASC1 complex subunit p50 antibody, ASC1p50 antibody, ASCC1 antibody, ASCC1_HUMAN antibody, CGI 18 antibody, RP11-150D20.4 antibody, Trip4 complex subunit p50 antibody

UniProt: [Q8N9N2](#)

Application Details

Application Notes: Recommended dilution: WB:1:500-1:5000, IHC:1:20-1:200,

Restrictions: For Research Use only

Handling

Format: Liquid

Buffer: Preservative: 0.03 % Proclin 300
Constituents: 50 % Glycerol, 0.01M PBS, PH 7.4

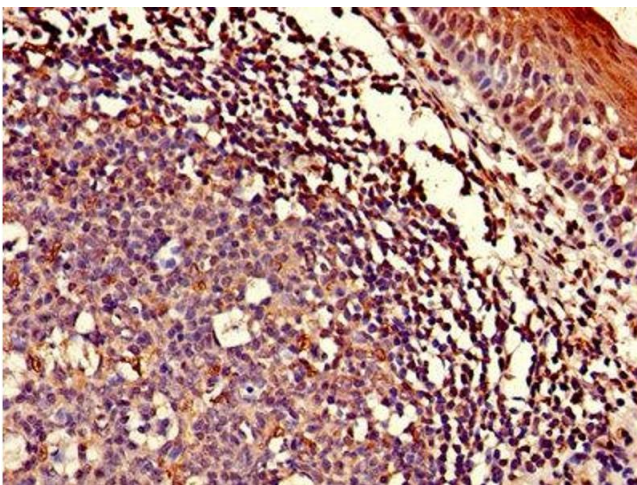
Preservative: ProClin

Precaution of Use: This product contains ProClin: a POISONOUS AND HAZARDOUS SUBSTANCE which should be handled by trained staff only.

Storage: -20 °C,-80 °C

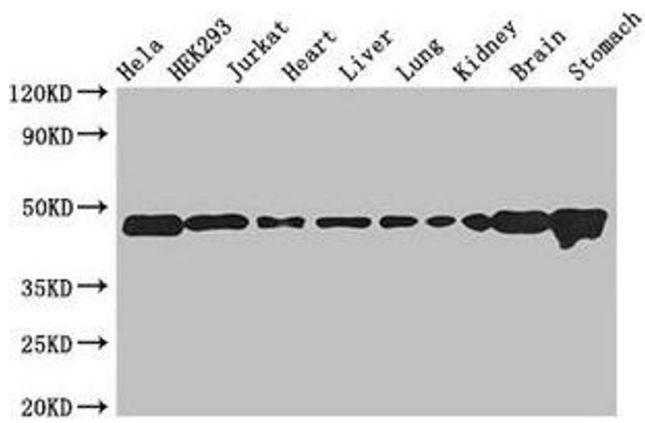
Storage Comment: Upon receipt, store at -20°C or -80°C. Avoid repeated freeze.

Images



Immunohistochemistry

Image 1. Immunohistochemistry of paraffin-embedded human tonsil tissue using ABIN7143153 at dilution of 1:100



Western Blotting

Image 2. Western Blot Positive WB detected in: HeLa whole cell lysate, HEK293 whole cell lysate, Jurkat whole cell lysate, Mouse heart tissue, Mouse liver tissue, Mouse lung tissue, Mouse kidney tissue, Mouse brain tissue, Mouse stomach tissue All lanes: ASCC1 antibody at 2.7 µg/mL Secondary Goat polyclonal to rabbit IgG at 1/50000 dilution Predicted band size: 46, 42 kDa Observed band size: 46 kDa