



[Go to Product page](#)

Datasheet for ABIN7143282
anti-ADAD1 antibody (AA 1-280)

2 Images

Overview

Quantity:	100 µL
Target:	ADAD1
Binding Specificity:	AA 1-280
Reactivity:	Human
Host:	Rabbit
Clonality:	Polyclonal
Conjugate:	This ADAD1 antibody is un-conjugated
Application:	Immunohistochemistry (IHC), ELISA

Product Details

Immunogen:	Recombinant Human Adenosine deaminase domain-containing protein 1 protein (1-280AA)
Isotype:	IgG
Cross-Reactivity:	Human
Purification:	Antigen Affinity Purified

Target Details

Target:	ADAD1
Alternative Name:	ADAD1 (ADAD1 Products)
Background:	Background: Plays a role in spermatogenesis. Binds to RNA but not to DNA (By similarity). Aliases: ADAD1 antibody, TENR antibody, Adenosine deaminase domain-containing protein 1

Target Details

antibody, Testis nuclear RNA-binding protein antibody

UniProt: [Q96M93](#)

Application Details

Application Notes: Recommended dilution: IHC:1:20-1:200,

Restrictions: For Research Use only

Handling

Format: Liquid

Buffer: PBS with 0.02 % sodium azide, 50 % glycerol, pH 7.3.

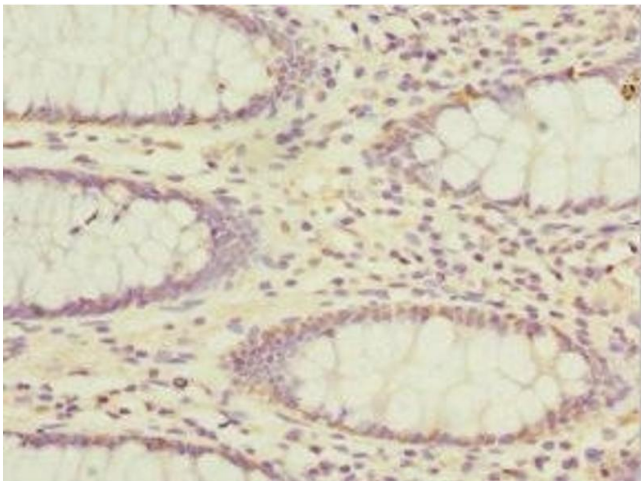
Preservative: Sodium azide

Precaution of Use: This product contains Sodium azide: a POISONOUS AND HAZARDOUS SUBSTANCE which should be handled by trained staff only.

Storage: -20 °C,-80 °C

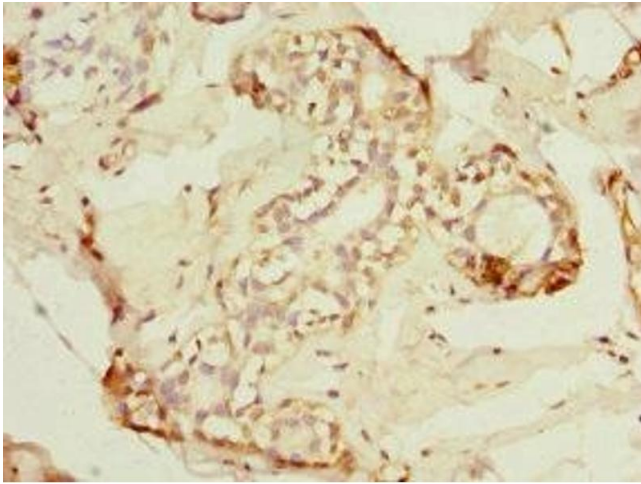
Storage Comment: Upon receipt, store at -20°C or -80°C. Avoid repeated freeze.

Images



Immunohistochemistry

Image 1. Immunohistochemistry of paraffin-embedded human colon cancer using ABIN7143282 at dilution of 1:100



Immunohistochemistry

Image 2. Immunohistochemistry of paraffin-embedded human breast cancer using ABIN7143282 at dilution of 1:100