

Datasheet for ABIN7143311
anti-AHCY antibody (AA 2-432)[Go to Product page](#)

2 Images

Overview

Quantity:	100 µg
Target:	AHCY
Binding Specificity:	AA 2-432
Reactivity:	Human
Host:	Rabbit
Clonality:	Polyclonal
Conjugate:	This AHCY antibody is un-conjugated
Application:	ELISA, Immunohistochemistry (IHC), Immunofluorescence (IF)

Product Details

Immunogen:	Recombinant Human Adenosylhomocysteinase protein (2-432AA)
Isotype:	IgG
Cross-Reactivity:	Human
Purification:	>95%, Protein G purified

Target Details

Target:	AHCY
Alternative Name:	AHCY (AHCY Products)
Background:	Background: Adenosylhomocysteine is a competitive inhibitor of S-adenosyl-L-methionine-dependent methyl transferase reactions, therefore adenosylhomocysteinase may play a key

Target Details

role in the control of methylations via regulation of the intracellular concentration of adenosylhomocysteine.

Aliases: Adenosylhomocysteinase antibody, AdoHcyase antibody, ahcY antibody, S adenosyl L homocysteine hydrolase antibody, S adenosylhomocysteine hydrolase antibody, S-adenosyl-L-homocysteine hydrolase antibody, SAHH antibody, SAHH_HUMAN antibody

UniProt: [P23526](#)

Application Details

Application Notes: Recommended dilution: IHC:1:20-1:200, IF:1:50-1:200,

Restrictions: For Research Use only

Handling

Format: Liquid

Buffer: Preservative: 0.03 % Proclin 300
Constituents: 50 % Glycerol, 0.01M PBS, PH 7.4

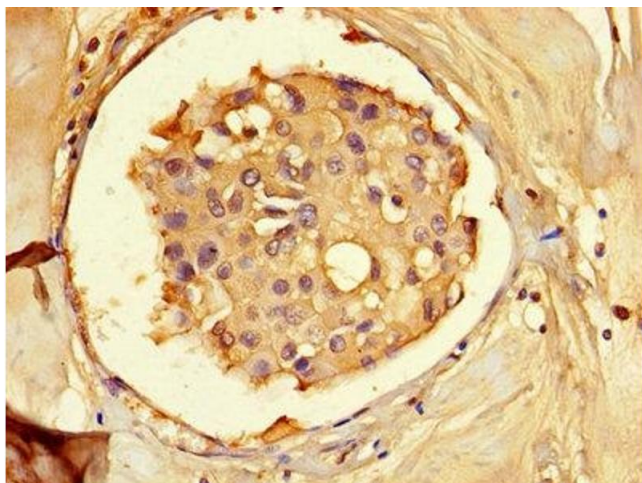
Preservative: ProClin

Precaution of Use: This product contains ProClin: a POISONOUS AND HAZARDOUS SUBSTANCE which should be handled by trained staff only.

Storage: -20 °C,-80 °C

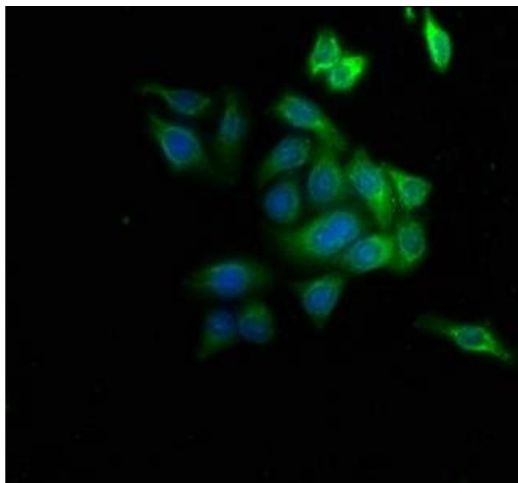
Storage Comment: Upon receipt, store at -20°C or -80°C. Avoid repeated freeze.

Images



Immunohistochemistry

Image 1. Immunohistochemistry of paraffin-embedded human breast cancer using ABIN7143311 at dilution of 1:100



Immunofluorescence

Image 2. Immunofluorescence staining of HepG2 cells with ABIN7143311 at 1:133, counter-stained with DAPI. The cells were fixed in 4% formaldehyde, permeabilized using 0.2% Triton X-100 and blocked in 10% normal Goat Serum. The cells were then incubated with the antibody overnight at 4°C. The secondary antibody was Alexa Fluor 488-conjugated AffiniPure Goat Anti-Rabbit IgG(H+L).