



[Go to Product page](#)

Datasheet for ABIN7143320  
**anti-ADCY1 antibody (AA 416-610)**

2 Images

### Overview

Quantity:	100 µg
Target:	ADCY1
Binding Specificity:	AA 416-610
Reactivity:	Human
Host:	Rabbit
Clonality:	Polyclonal
Conjugate:	This ADCY1 antibody is un-conjugated
Application:	ELISA, Immunohistochemistry (IHC), Immunofluorescence (IF)

### Product Details

Immunogen:	Recombinant Human Adenylate cyclase type 1 protein (416-610AA)
Isotype:	IgG
Cross-Reactivity:	Human
Purification:	>95%, Protein G purified

### Target Details

Target:	ADCY1
Alternative Name:	ADCY1 ( <a href="#">ADCY1 Products</a> )
Background:	Background: Catalyzes the formation of the signaling molecule cAMP in response to G-protein signaling. Mediates responses to increased cellular Ca(2+)/calmodulin levels (By similarity).

## Target Details

---

May be involved in regulatory processes in the central nervous system. May play a role in memory and learning. Plays a role in the regulation of the circadian rhythm of daytime contrast sensitivity probably by modulating the rhythmic synthesis of cyclic AMP in the retina (By similarity).

Aliases: Adenylate cyclase 1, fetal brain, type I antibody, 3',5'-cyclic AMP synthetase antibody, AC1 antibody, Adcy1 antibody, ADCY1\_HUMAN antibody, adenyl cyclase antibody, Adenylate cyclase 1 antibody, adenylate cyclase 1 (brain) antibody, Adenylate cyclase type 1 antibody, Adenylate cyclase type I antibody, Adenylyl cyclase 1 antibody, ATP pyrophosphate lyase antibody, ATP pyrophosphate-lyase 1 antibody, Brain adenylate cyclase 1 antibody, Ca(2+)/calmodulin-activated adenylyl cyclase antibody, deafness, autosomal recessive 44 antibody, DFNB44 antibody

---

UniProt: [Q08828](#)

---

Pathways: [EGFR Signaling Pathway](#), [Neurotrophin Signaling Pathway](#), [Thyroid Hormone Synthesis](#), [cAMP Metabolic Process](#), [Myometrial Relaxation and Contraction](#), [G-protein mediated Events](#), [Interaction of EGFR with phospholipase C-gamma](#)

## Application Details

---

Application Notes: Recommended dilution: IHC:1:20-1:200, IF:1:50-1:200,

---

Restrictions: For Research Use only

## Handling

---

Format: Liquid

---

Buffer: Preservative: 0.03 % Proclin 300  
Constituents: 50 % Glycerol, 0.01M PBS, PH 7.4

---

Preservative: ProClin

---

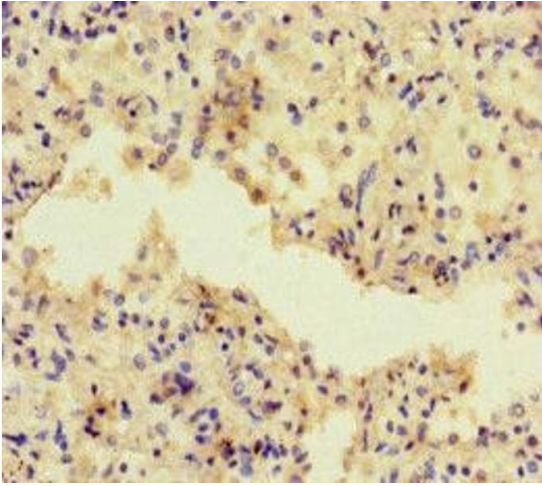
Precaution of Use: This product contains ProClin: a POISONOUS AND HAZARDOUS SUBSTANCE which should be handled by trained staff only.

---

Storage: -20 °C,-80 °C

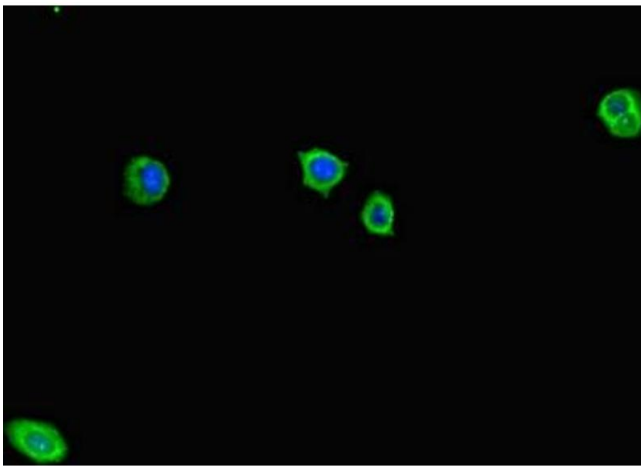
---

Storage Comment: Upon receipt, store at -20°C or -80°C. Avoid repeated freeze.



#### Immunohistochemistry

**Image 1.** Immunohistochemistry of paraffin-embedded human lung cancer using ABIN7143320 at dilution of 1:100



#### Immunofluorescence

**Image 2.** Immunofluorescent analysis of HepG2 cells using ABIN7143320 at dilution of 1:100 and Alexa Fluor 488-conjugated AffiniPure Goat Anti-Rabbit IgG(H+L)