

Datasheet for ABIN7143334
anti-ADCY6 antibody (AA 9-118)

3 Images

[Go to Product page](#)

Overview

Quantity:	100 µg
Target:	ADCY6
Binding Specificity:	AA 9-118
Reactivity:	Human
Host:	Rabbit
Clonality:	Polyclonal
Conjugate:	This ADCY6 antibody is un-conjugated
Application:	ELISA, Immunohistochemistry (IHC), Immunofluorescence (IF)

Product Details

Immunogen:	Recombinant Human Adenylate cyclase type 6 protein (9-118AA)
Isotype:	IgG
Cross-Reactivity:	Human
Purification:	>95%, Protein G purified

Target Details

Target:	ADCY6
Alternative Name:	ADCY6 (ADCY6 Products)
Background:	Background: Catalyzes the formation of the signaling molecule cAMP downstream of G protein-coupled receptors (PubMed:17916776, PubMed:17110384). Functions in signaling cascades

Target Details

downstream of beta-adrenergic receptors in the heart and in vascular smooth muscle cells (PubMed:17916776). Functions in signaling cascades downstream of the vasopressin receptor in the kidney and has a role in renal water reabsorption. Functions in signaling cascades downstream of PTH1R and plays a role in regulating renal phosphate excretion. Functions in signaling cascades downstream of the VIP and SCT receptors in pancreas and contributes to the regulation of pancreatic amylase and fluid secretion (By similarity). Signaling mediates cAMP-dependent activation of protein kinase PKA. This promotes increased phosphorylation of various proteins, including AKT. Plays a role in regulating cardiac sarcoplasmic reticulum Ca(2+) uptake and storage, and is required for normal heart ventricular contractibility. May contribute to normal heart function (By similarity). Mediates vasodilatation after activation of beta-adrenergic receptors by isoproterenol (PubMed:17916776). Contributes to bone cell responses to mechanical stimuli (By similarity).

Aliases: AC6 antibody, ACVI antibody, ADCY 6 antibody, Adcy6 antibody, ADCY6_HUMAN antibody, ADCYB antibody, Adenylate cyclase 6 antibody, Adenylate cyclase type 6 antibody, Adenylate cyclase type VI antibody, Adenylyl cyclase 6 antibody, ATP pyrophosphate lyase 6 antibody, ATP pyrophosphate-lyase 6 antibody, Ca(2+) inhibitable adenylyl cyclase antibody, Ca(2+)-inhibitable adenylyl cyclase antibody, DKFZp779F075 antibody, EC 4.6.1.1 antibody, KIAA0422 antibody

UniProt: [O43306](#)

Pathways: [EGFR Signaling Pathway](#), [Neurotrophin Signaling Pathway](#), [Thyroid Hormone Synthesis](#), [cAMP Metabolic Process](#), [Myometrial Relaxation and Contraction](#), [G-protein mediated Events](#), [Interaction of EGFR with phospholipase C-gamma](#)

Application Details

Application Notes: Recommended dilution: IHC:1:20-1:200, IF:1:50-1:200,

Restrictions: For Research Use only

Handling

Format: Liquid

Buffer: Preservative: 0.03 % Proclin 300
Constituents: 50 % Glycerol, 0.01M PBS, pH 7.4

Preservative: ProClin

Precaution of Use: This product contains ProClin: a POISONOUS AND HAZARDOUS SUBSTANCE which should be

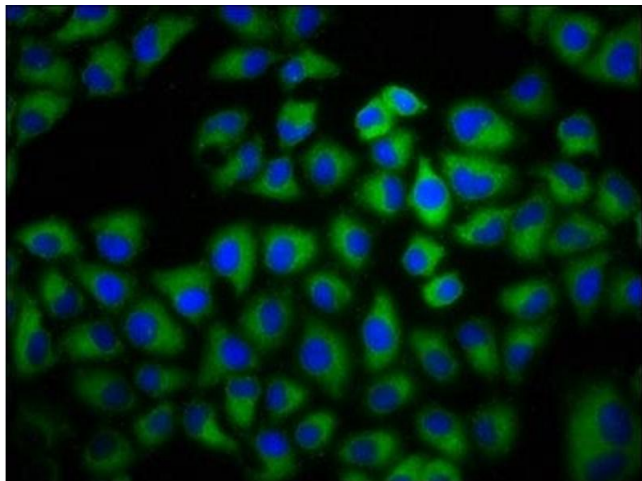
Handling

handled by trained staff only.

Storage: -20 °C, -80 °C

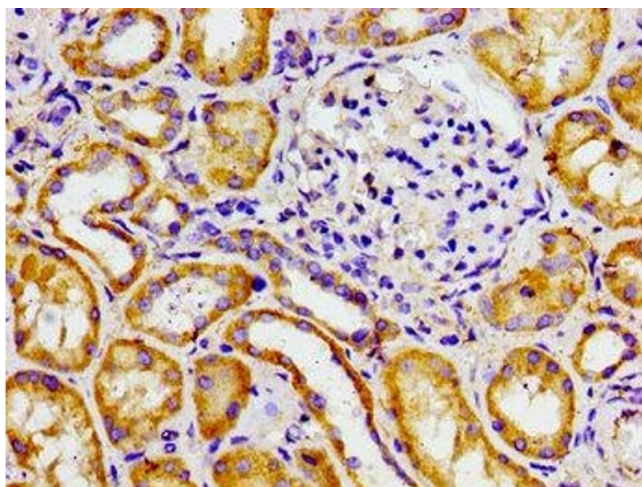
Storage Comment: Upon receipt, store at -20°C or -80°C. Avoid repeated freeze.

Images



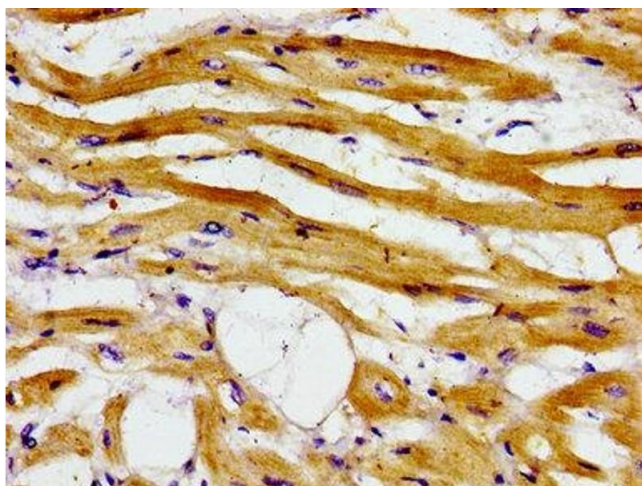
Immunofluorescence

Image 1. Immunofluorescence staining of HeLa cells with ABIN7143334 at 1:133, counter-stained with DAPI. The cells were fixed in 4% formaldehyde, permeabilized using 0.2% Triton X-100 and blocked in 10% normal Goat Serum. The cells were then incubated with the antibody overnight at 4°C. The secondary antibody was Alexa Fluor 488-conjugated AffiniPure Goat Anti-Rabbit IgG(H+L).



Immunohistochemistry

Image 2. Immunohistochemistry of paraffin-embedded human kidney tissue using ABIN7143334 at dilution of 1:100



Immunohistochemistry

Image 3. Immunohistochemistry of paraffin-embedded human heart tissue using ABIN7143334 at dilution of 1:100