



[Go to Product page](#)

Datasheet for ABIN7143338
anti-ADCY8 antibody (AA 534-670)

3 Images

Overview

Quantity:	100 µg
Target:	ADCY8
Binding Specificity:	AA 534-670
Reactivity:	Human
Host:	Rabbit
Clonality:	Polyclonal
Conjugate:	This ADCY8 antibody is un-conjugated
Application:	ELISA, Immunohistochemistry (IHC), Immunofluorescence (IF)

Product Details

Immunogen:	Recombinant Human Adenylate cyclase type 8 protein (534-670AA)
Isotype:	IgG
Cross-Reactivity:	Human
Purification:	>95%, Protein G purified

Target Details

Target:	ADCY8
Alternative Name:	ADCY8 (ADCY8 Products)
Background:	Background: This is a membrane-bound, calcium-stimulable adenylyl cyclase. May be involved in learning, in memory and in drug dependence (By similarity).

Target Details

Aliases: ADCY8 antibody, Adenylate cyclase type 8 antibody, EC 4.6.1.1 antibody, ATP pyrophosphate-lyase 8 antibody, Adenylate cyclase type VIII antibody, Adenylyl cyclase 8 antibody, AC8 antibody, Ca(2+)/calmodulin-activated adenylyl cyclase antibody

UniProt: [P40145](#)

Pathways: [EGFR Signaling Pathway](#), [Neurotrophin Signaling Pathway](#), [Thyroid Hormone Synthesis](#), [cAMP Metabolic Process](#), [Myometrial Relaxation and Contraction](#), [G-protein mediated Events](#), [Interaction of EGFR with phospholipase C-gamma](#)

Application Details

Application Notes: Recommended dilution: IHC:1:20-1:200, IF:1:200-1:500,

Restrictions: For Research Use only

Handling

Format: Liquid

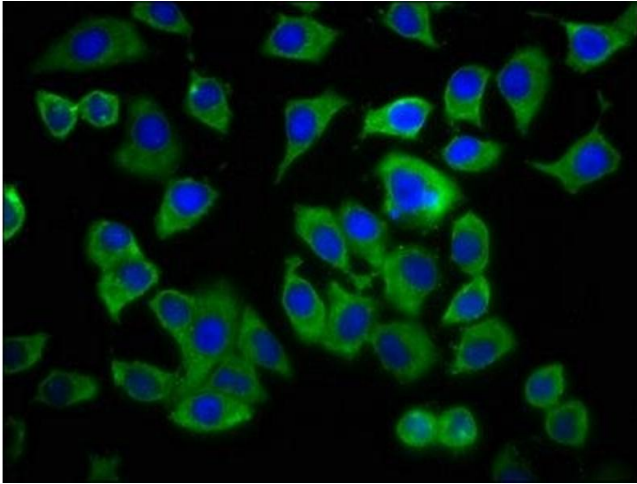
Buffer: Preservative: 0.03 % Proclin 300
Constituents: 50 % Glycerol, 0.01M PBS, pH 7.4

Preservative: ProClin

Precaution of Use: This product contains ProClin: a POISONOUS AND HAZARDOUS SUBSTANCE which should be handled by trained staff only.

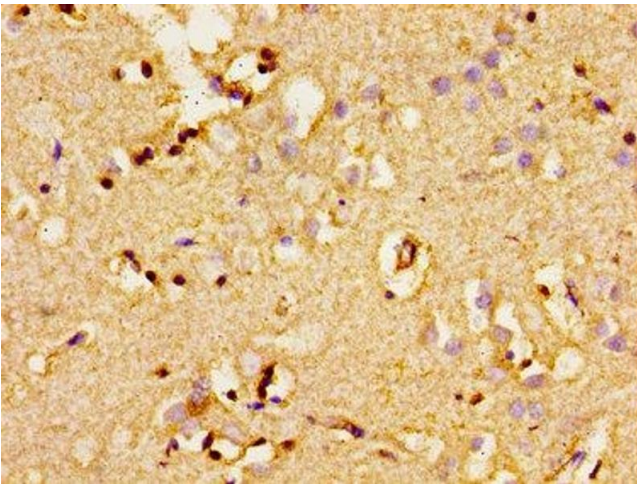
Storage: -20 °C,-80 °C

Storage Comment: Upon receipt, store at -20°C or -80°C. Avoid repeated freeze.



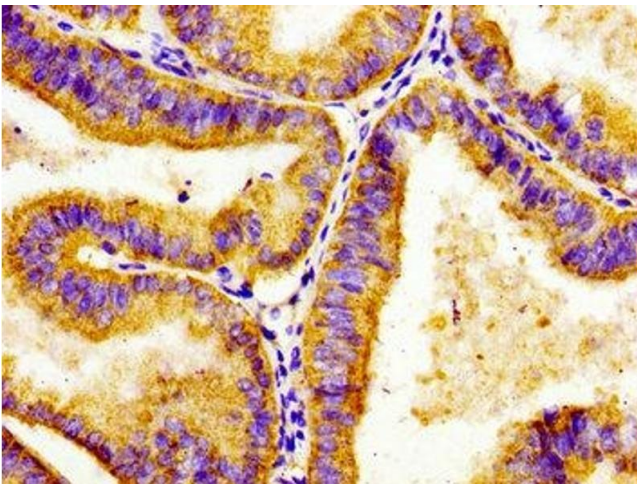
Immunofluorescence

Image 1. Immunofluorescence staining of A549 cells with ABIN7143338 at 1:233, counter-stained with DAPI. The cells were fixed in 4% formaldehyde, permeabilized using 0.2% Triton X-100 and blocked in 10% normal Goat Serum. The cells were then incubated with the antibody overnight at 4°C. The secondary antibody was Alexa Fluor 488-conjugated AffiniPure Goat Anti-Rabbit IgG(H+L).



Immunohistochemistry

Image 2. Immunohistochemistry of paraffin-embedded human brain tissue using ABIN7143338 at dilution of 1:100



Immunohistochemistry

Image 3. Immunohistochemistry of paraffin-embedded human endometrial cancer using ABIN7143338 at dilution of 1:100