

Datasheet for ABIN7143354
anti-CAP1 antibody (AA 22-157)[Go to Product page](#)

4 Images

Overview

Quantity:	100 µL
Target:	CAP1
Binding Specificity:	AA 22-157
Reactivity:	Human
Host:	Rabbit
Clonality:	Polyclonal
Conjugate:	This CAP1 antibody is un-conjugated
Application:	Western Blotting (WB), Immunohistochemistry (IHC), ELISA, Immunofluorescence (IF)

Product Details

Immunogen:	Recombinant Human Adenylyl cyclase-associated protein 1 protein (22-157AA)
Isotype:	IgG
Cross-Reactivity:	Human
Purification:	>95%, Protein G purified

Target Details

Target:	CAP1
Alternative Name:	CAP1 (CAP1 Products)
Background:	Background: Directly regulates filament dynamics and has been implicated in a number of complex developmental and morphological processes, including mRNA localization and the

Target Details

establishment of cell polarity.

Aliases: Adenylyl cyclase associated protein 1 antibody, Adenylyl cyclase-associated protein 1 antibody, CAP 1 antibody, CAP antibody, CAP, adenylate cyclase associated protein 1 (yeast) antibody, CAP1 antibody, CAP1 PEN antibody, CAP1-PEN antibody, CAP1_HUMAN antibody

UniProt: [Q01518](#)

Pathways: [cAMP Metabolic Process](#)

Application Details

Application Notes: Recommended dilution: WB:1:1000-1:5000, IHC:1:200-1:500, IF:1:50-1:200,

Restrictions: For Research Use only

Handling

Format: Liquid

Buffer: Preservative: 0.03 % Proclin 300
Constituents: 50 % Glycerol, 0.01M PBS, pH 7.4

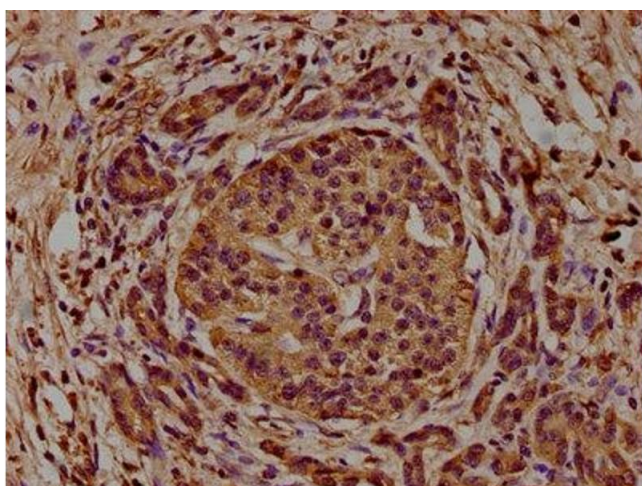
Preservative: ProClin

Precaution of Use: This product contains ProClin: a POISONOUS AND HAZARDOUS SUBSTANCE which should be handled by trained staff only.

Storage: -20 °C,-80 °C

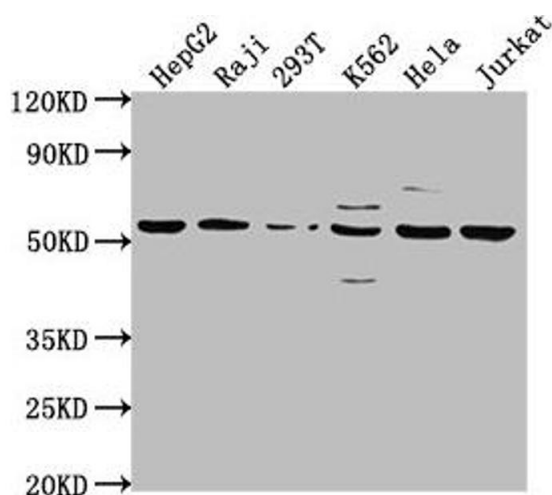
Storage Comment: Upon receipt, store at -20°C or -80°C. Avoid repeated freeze.

Images



Immunohistochemistry

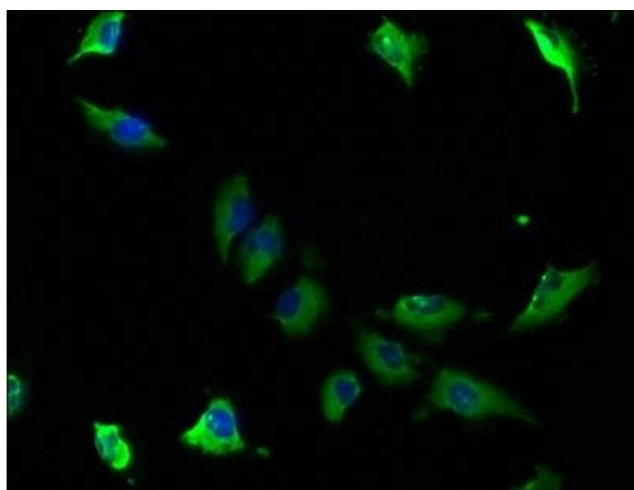
Image 1. IHC image of ABIN7143354 diluted at 1:200 and staining in paraffin-embedded human pancreatic cancer performed on a Leica Bond™ system. After dewaxing and hydration, antigen retrieval was mediated by high pressure in a citrate buffer (pH 6.0). Section was blocked with 10 % normal goat serum 30 min at RT. Then primary antibody (1 % BSA) was incubated at 4 °C overnight. The primary is detected by a biotinylated secondary antibody and



visualized using an HRP conjugated SP system.

Western Blotting

Image 2. Western Blot Positive WB detected in: HepG2 whole cell lysate, Raji whole cell lysate, 293T whole cell lysate, K562 whole cell lysate, HeLa whole cell lysate, Jurkat whole cell lysate. All lanes: CAP1 antibody at 1:2000. Secondary Goat polyclonal to rabbit IgG at 1/50000 dilution. Predicted band size: 52 kDa. Observed band size: 52 kDa.



Immunofluorescence

Image 3. Immunofluorescence staining of U251 cells with ABIN7143354 at 1:100, counter-stained with DAPI. The cells were fixed in 4 % formaldehyde, permeabilized using 0.2 % Triton X-100 and blocked in 10 % normal Goat Serum. The cells were then incubated with the antibody overnight at 4 °C. The secondary antibody was Alexa Fluor 488-conjugated AffiniPure Goat Anti-Rabbit IgG(H+L).

Please check the [product details page](#) for more images. Overall 4 images are available for ABIN7143354.