



[Go to Product page](#)

Datasheet for ABIN7143434
anti-ADPGK antibody (AA 218-497)

1 Image

Overview

Quantity:	100 µL
Target:	ADPGK
Binding Specificity:	AA 218-497
Reactivity:	Human
Host:	Rabbit
Clonality:	Polyclonal
Conjugate:	This ADPGK antibody is un-conjugated
Application:	ELISA, Immunohistochemistry (IHC)

Product Details

Immunogen:	Recombinant Human ADP-dependent glucokinase protein (218-497AA)
Isotype:	IgG
Cross-Reactivity:	Human
Purification:	Antigen Affinity Purified

Target Details

Target:	ADPGK
Alternative Name:	ADPGK (ADPGK Products)
Background:	Background: Catalyzes the phosphorylation of D-glucose to D-glucose 6-phosphate using ADP as the phosphate donor. GDP and CDP can replace ADP, but with reduced efficiency (By

Target Details

similarity).

Aliases: 2610017G09Rik antibody, ADP dependent glucokinase antibody, ADP GK antibody, ADP-dependent glucokinase antibody, ADP-GK antibody, ADPGK antibody, ADPGK_HUMAN antibody, ATP dependent glucokinase antibody, DKFZP434B195 antibody, RbBP 35 antibody, RbBP-35 antibody

UniProt: [Q9BRR6](#)

Application Details

Application Notes: Recommended dilution: IHC:1:20-1:200,

Restrictions: For Research Use only

Handling

Format: Liquid

Buffer: PBS with 0.02 % sodium azide, 50 % glycerol, pH 7.3.

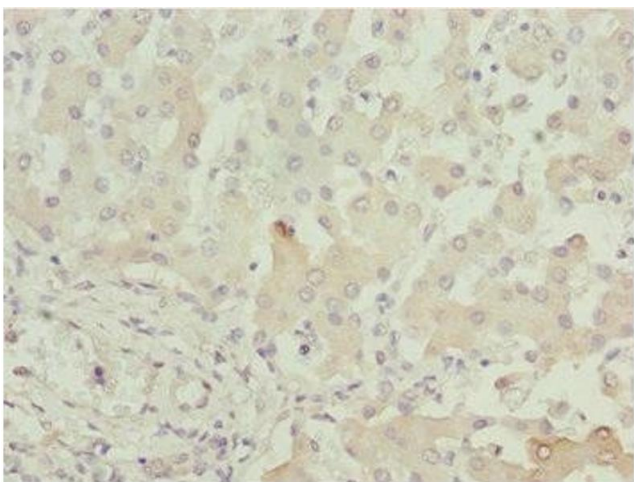
Preservative: Sodium azide

Precaution of Use: This product contains Sodium azide: a POISONOUS AND HAZARDOUS SUBSTANCE which should be handled by trained staff only.

Storage: -20 °C,-80 °C

Storage Comment: Upon receipt, store at -20°C or -80°C. Avoid repeated freeze.

Images



Immunohistochemistry

Image 1. Immunohistochemistry of paraffin-embedded human liver tissue using ABIN7143434 at dilution of 1:100