



[Go to Product page](#)

Datasheet for ABIN7143446

anti-ARF3 antibody (AA 1-181)

3 Images

Overview

Quantity:	100 µL
Target:	ARF3
Binding Specificity:	AA 1-181
Reactivity:	Human
Host:	Rabbit
Clonality:	Polyclonal
Conjugate:	This ARF3 antibody is un-conjugated
Application:	Western Blotting (WB), ELISA, Immunohistochemistry (IHC)

Product Details

Immunogen:	Recombinant Human ADP-ribosylation factor 3 protein (1-181AA)
Isotype:	IgG
Cross-Reactivity:	Human, Mouse
Purification:	Antigen Affinity Purified

Target Details

Target:	ARF3
Alternative Name:	ARF3 (ARF3 Products)
Background:	Background: GTP-binding protein that functions as an allosteric activator of the cholera toxin catalytic subunit, an ADP-ribosyltransferase. Involved in protein trafficking, may modulate

Target Details

vesicle budding and uncoating within the Golgi apparatus.

Aliases: ADP ribosylation factor 3 antibody, ADP-ribosylation factor 3 antibody, ARF3 antibody, ARF3_HUMAN antibody, small GTP binding protein antibody

UniProt: [P61204](#)

Pathways: [Inositol Metabolic Process](#), [Cellular Glucan Metabolic Process](#)

Application Details

Application Notes: Recommended dilution: WB:1:500-1:2000, IHC:1:20-1:200,

Restrictions: For Research Use only

Handling

Format: Liquid

Buffer: PBS with 0.02 % sodium azide, 50 % glycerol, pH 7.3.

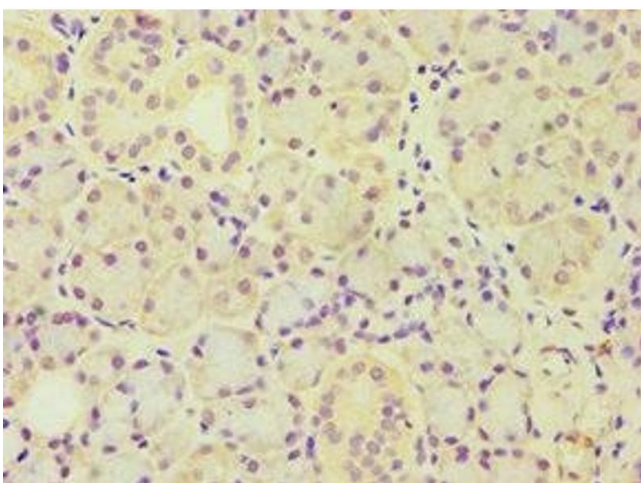
Preservative: Sodium azide

Precaution of Use: This product contains Sodium azide: a POISONOUS AND HAZARDOUS SUBSTANCE which should be handled by trained staff only.

Storage: -20 °C,-80 °C

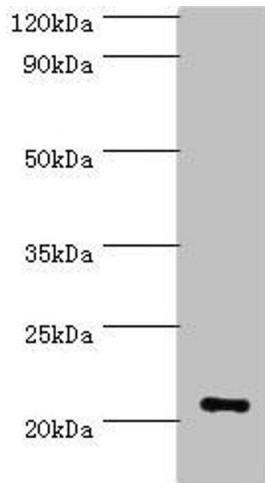
Storage Comment: Upon receipt, store at -20°C or -80°C. Avoid repeated freeze.

Images



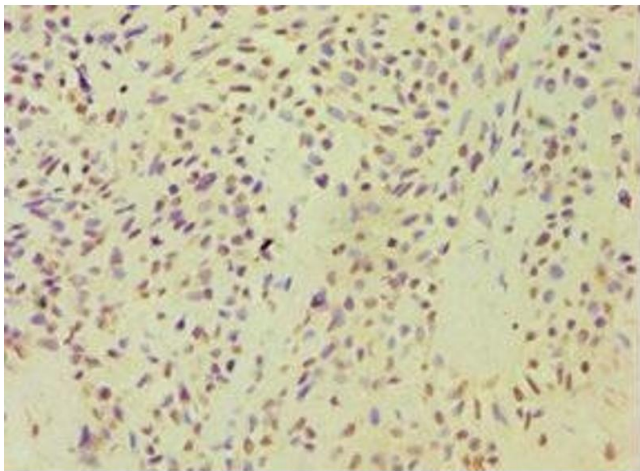
Immunohistochemistry

Image 1. Immunohistochemistry of paraffin-embedded human pancreatic tissue using ABIN7143446 at dilution of 1:100



Western Blotting

Image 2. Western blot All lanes: ARF3 antibody at 6 µg/mL + Mouse brain tissue Secondary Goat polyclonal to rabbit IgG at 1/10000 dilution Predicted band size: 21, 17 kDa Observed band size: 21 kDa



Immunohistochemistry

Image 3. Immunohistochemistry of paraffin-embedded human breast cancer using ABIN7143446 at dilution of 1:100