

Datasheet for ABIN7143513  
**anti-ARL6 antibody (AA 1-186)**[Go to Product page](#)

## 1 Image

## Overview

Quantity:	100 µL
Target:	ARL6
Binding Specificity:	AA 1-186
Reactivity:	Human
Host:	Rabbit
Clonality:	Polyclonal
Conjugate:	This ARL6 antibody is un-conjugated
Application:	Immunohistochemistry (IHC), ELISA

## Product Details

Immunogen:	Recombinant Human ADP-ribosylation factor-like protein 6 protein (1-186AA)
Isotype:	IgG
Cross-Reactivity:	Human
Purification:	Antigen Affinity Purified

## Target Details

Target:	ARL6
Alternative Name:	ARL6 ( <a href="#">ARL6 Products</a> )
Background:	Background: Involved in membrane protein trafficking at the base of the ciliary organelle. Mediates recruitment onto plasma membrane of the BBSome complex which would constitute

## Target Details

a coat complex required for sorting of specific membrane proteins to the primary cilia (PubMed:20603001). Together with BBS1, is necessary for correct trafficking of PKD1 to primary cilia (By similarity). Together with the BBSome complex and LTZL1, controls SMO ciliary trafficking and contributes to the sonic hedgehog (SHH) pathway regulation (PubMed:22072986). May regulate cilia assembly and disassembly and subsequent ciliary signaling events such as the Wnt signaling cascade (PubMed:20207729). Isoform 2 may be required for proper retinal function and organization (By similarity).

Aliases: ADP ribosylation factor like 6 antibody, ADP ribosylation factor like protein 6 antibody, ADP-ribosylation factor-like protein 6 antibody, Arl6 antibody, ARL6\_HUMAN antibody, Bardet Biedl syndrome 3 protein antibody, Bardet-Biedl syndrome 3 protein antibody, BBS3 antibody, MGC32934 antibody

UniProt: [Q9H0F7](#)

## Application Details

Application Notes: Recommended dilution: IHC:1:20-1:200,

Restrictions: For Research Use only

## Handling

Format: Liquid

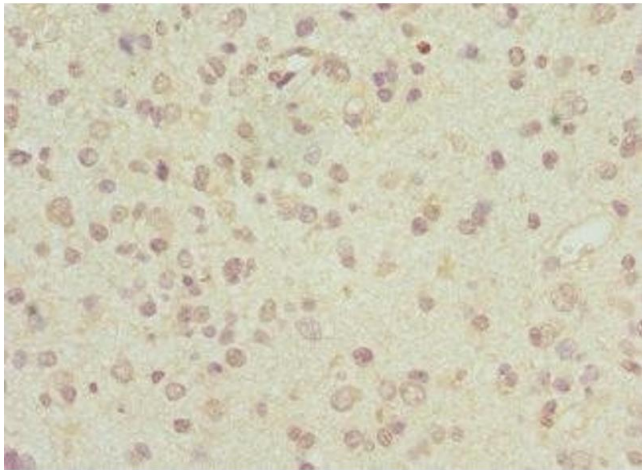
Buffer: PBS with 0.02 % sodium azide, 50 % glycerol, pH 7.3.

Preservative: Sodium azide

Precaution of Use: This product contains Sodium azide: a POISONOUS AND HAZARDOUS SUBSTANCE which should be handled by trained staff only.

Storage: -20 °C,-80 °C

Storage Comment: Upon receipt, store at -20°C or -80°C. Avoid repeated freeze.



#### Immunohistochemistry

**Image 1.** Immunohistochemistry of paraffin-embedded human glioma using ABIN7143513 at dilution of 1:100