



[Go to Product page](#)

Datasheet for ABIN7143514  
**anti-ARL6IP1 antibody (AA 93-133)**

3 Images

### Overview

Quantity:	100 µg
Target:	ARL6IP1
Binding Specificity:	AA 93-133
Reactivity:	Human
Host:	Rabbit
Clonality:	Polyclonal
Conjugate:	This ARL6IP1 antibody is un-conjugated
Application:	ELISA, Immunohistochemistry (IHC), Immunofluorescence (IF)

### Product Details

Immunogen:	Recombinant Human ADP-ribosylation factor-like protein 6-interacting protein 1 protein (93-133AA)
Isotype:	IgG
Cross-Reactivity:	Human
Purification:	Antigen Affinity Purified

### Target Details

Target:	ARL6IP1
Alternative Name:	ARL6IP1 ( <a href="#">ARL6IP1 Products</a> )
Background:	Background: May be involved in protein transport, membrane trafficking, or cell signaling during

## Target Details

hematopoietic maturation.

Aliases: ADP ribosylation factor like 6 interacting protein antibody, ADP-ribosylation factor-like protein 6-interacting protein 1 antibody, Aip-1 antibody, Aip1 antibody, AR6P1\_HUMAN antibody, ARL-6-interacting protein 1 antibody, ARL6 interacting protein 1 antibody, ARL6IP antibody, Arl6ip1 antibody, ARMER antibody, KIAA0069 antibody

UniProt: [Q15041](#)

## Application Details

Application Notes: Recommended dilution: IHC:1:20-1:200, IF:1:50-1:200,

Restrictions: For Research Use only

## Handling

Format: Liquid

Buffer: Preservative: 0.03 % Proclin 300  
Constituents: 50 % Glycerol, 0.01M PBS, PH 7.4

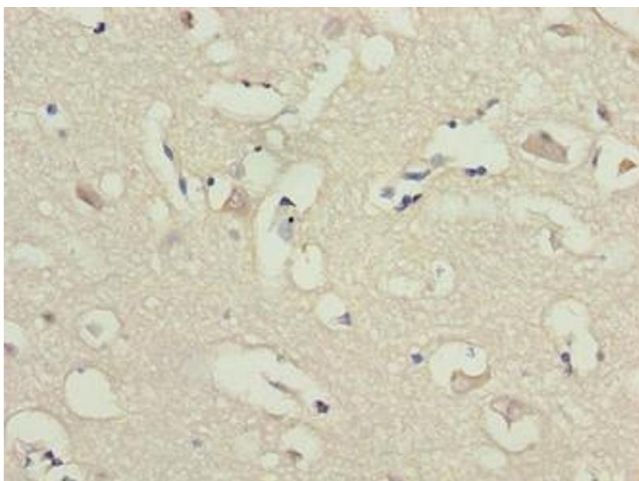
Preservative: ProClin

Precaution of Use: This product contains ProClin: a POISONOUS AND HAZARDOUS SUBSTANCE which should be handled by trained staff only.

Storage: -20 °C,-80 °C

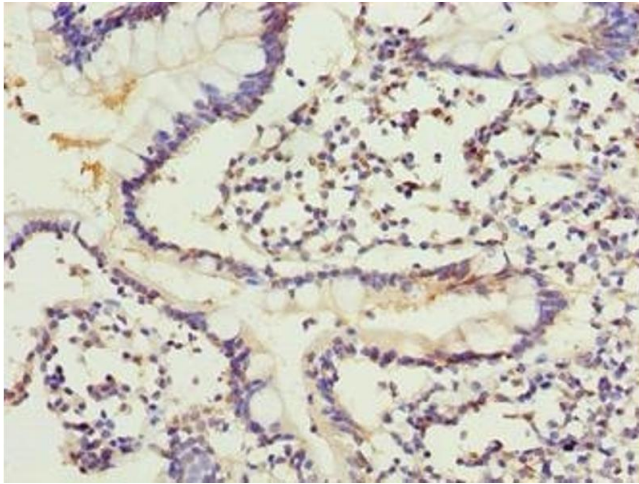
Storage Comment: Upon receipt, store at -20°C or -80°C. Avoid repeated freeze.

## Images



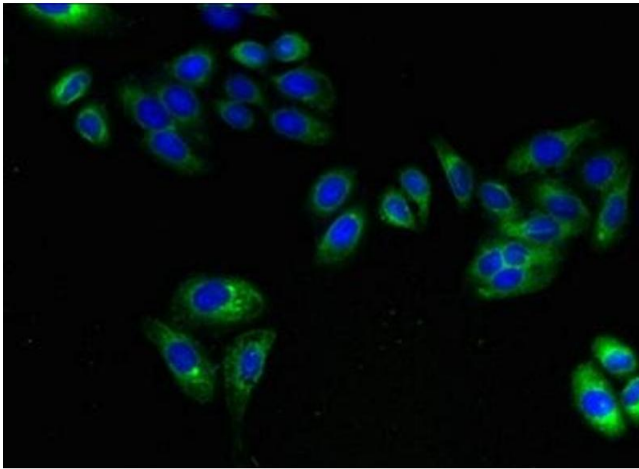
### Immunohistochemistry

**Image 1.** Immunohistochemistry of paraffin-embedded human brain tissue using ABIN7143514 at dilution of 1:100



### Immunohistochemistry

**Image 2.** Immunohistochemistry of paraffin-embedded human small intestine tissue using ABIN7143514 at dilution of 1:100



### Immunofluorescence

**Image 3.** Immunofluorescent analysis of HepG2 cells using ABIN7143514 at dilution of 1:100 and Alexa Fluor 488-conjugated AffiniPure Goat Anti-Rabbit IgG(H+L)