



[Go to Product page](#)

Datasheet for ABIN7143526  
**anti-ARFRP1 antibody (AA 1-201)**

1 Image

### Overview

Quantity:	100 µg
Target:	ARFRP1
Binding Specificity:	AA 1-201
Reactivity:	Human
Host:	Rabbit
Clonality:	Polyclonal
Conjugate:	This ARFRP1 antibody is un-conjugated
Application:	ELISA, Immunohistochemistry (IHC)

### Product Details

Immunogen:	Recombinant Human ADP-ribosylation factor-related protein 1 protein (1-201AA)
Isotype:	IgG
Cross-Reactivity:	Human
Purification:	>95%, Protein G purified

### Target Details

Target:	ARFRP1
Alternative Name:	ARFRP1 ( <a href="#">ARFRP1 Products</a> )
Background:	Background: Trans-Golgi-associated GTPase that regulates protein sorting. Controls the targeting of ARL1 and its effector to the trans-Golgi. Required for the lipidation of chylomicrons

## Target Details

---

in the intestine and required for VLDL lipidation in the liver.

Aliases: ADP ribosylation factor related protein 1 antibody, ADP-ribosylation factor-related protein 1 antibody, ARF related protein 1 antibody, ARF related protein antibody, ARF-related protein 1 antibody, ARFRP\_HUMAN antibody, ARFRP1 antibody, ARL 18 antibody, ARL18 antibody, ARP 1 antibody, ARP antibody, ARP1 antibody, Helicase like protein NHL antibody, MGC6837 antibody, SCG10 like protein antibody

---

UniProt: [Q13795](#)

## Application Details

---

Application Notes: Recommended dilution: IHC:1:200-1:500,

Restrictions: For Research Use only

## Handling

---

Format: Liquid

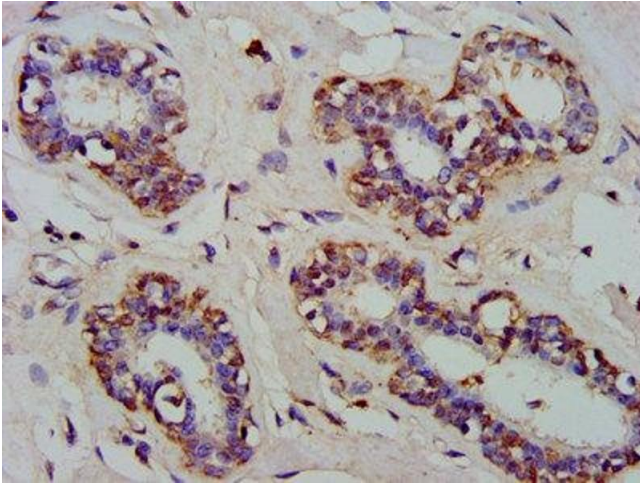
Buffer: Preservative: 0.03 % Proclin 300  
Constituents: 50 % Glycerol, 0.01M PBS, pH 7.4

Preservative: ProClin

Precaution of Use: This product contains ProClin: a POISONOUS AND HAZARDOUS SUBSTANCE which should be handled by trained staff only.

Storage: -20 °C,-80 °C

Storage Comment: Upon receipt, store at -20°C or -80°C. Avoid repeated freeze.



### Immunohistochemistry

**Image 1.** IHC image of ABIN7143526 diluted at 1:300 and staining in paraffin-embedded human breast cancer performed on a Leica Bond™ system. After dewaxing and hydration, antigen retrieval was mediated by high pressure in a citrate buffer (pH 6.0). Section was blocked with 10% normal goat serum 30min at RT. Then primary antibody (1% BSA) was incubated at 4°C overnight. The primary is detected by a biotinylated secondary antibody and visualized using an HRP conjugated SP system.