



[Go to Product page](#)

Datasheet for ABIN7143534

## anti-SLC25A4 antibody (AA 40-74)

### 3 Images

#### Overview

Quantity:	100 µg
Target:	SLC25A4
Binding Specificity:	AA 40-74
Reactivity:	Human
Host:	Rabbit
Clonality:	Polyclonal
Conjugate:	This SLC25A4 antibody is un-conjugated
Application:	ELISA, Immunohistochemistry (IHC), Immunofluorescence (IF)

#### Product Details

Immunogen:	Recombinant Human ADP/ATP translocase 1 protein (40-74AA)
Isotype:	IgG
Cross-Reactivity:	Human
Purification:	>95%, Protein G purified

#### Target Details

Target:	SLC25A4
Alternative Name:	SLC25A4 ( <a href="#">SLC25A4 Products</a> )
Background:	Background: Catalyzes the exchange of cytoplasmic ADP with mitochondrial ATP across the mitochondrial inner membrane.

## Target Details

---

Aliases: AAC1 antibody, Adenine Nucleotide Translocase 1 antibody, Adenine nucleotide translocator 1 (skeletal muscle) antibody, Adenine nucleotide translocator 1 antibody, ADP antibody, ADP ATP carrier protein 1 antibody, ADP ATP carrier protein heart/skeletal muscle isoform T1 antibody, ADP/ATP translocase 1 antibody, ADT1\_HUMAN antibody, ANT 1 antibody, ANT antibody, ANT1 antibody, ATP carrier protein 1 antibody, ATP carrier protein antibody, heart/skeletal muscle isoform T1 antibody, PEO2 antibody, PEO3 antibody, SLC25A4 antibody, Solute carrier family 25 member 4 antibody, T1 antibody

---

UniProt: [P12235](#)

---

Pathways: [Proton Transport](#), [Dicarboxylic Acid Transport](#)

## Application Details

---

Application Notes: Recommended dilution: IHC:1:20-1:200, IF:1:50-1:500,

---

Restrictions: For Research Use only

## Handling

---

Format: Liquid

---

Buffer: Preservative: 0.03 % Proclin 300  
Constituents: 50 % Glycerol, 0.01M PBS, PH 7.4

---

Preservative: ProClin

---

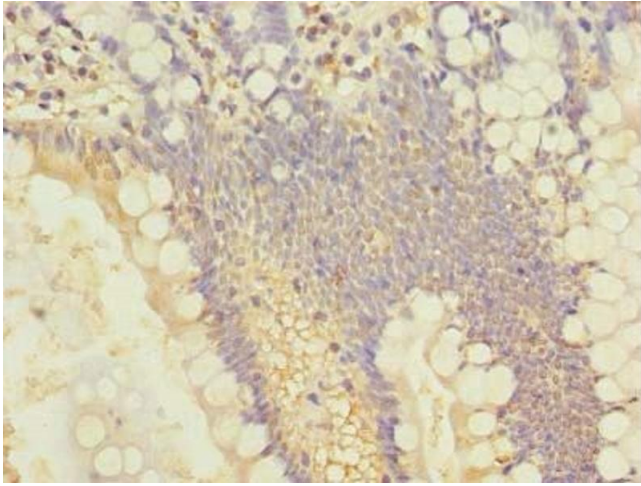
Precaution of Use: This product contains ProClin: a POISONOUS AND HAZARDOUS SUBSTANCE which should be handled by trained staff only.

---

Storage: -20 °C,-80 °C

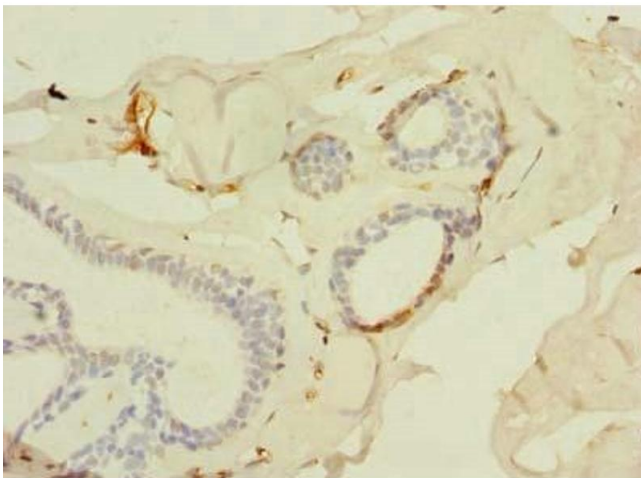
---

Storage Comment: Upon receipt, store at -20°C or -80°C. Avoid repeated freeze.



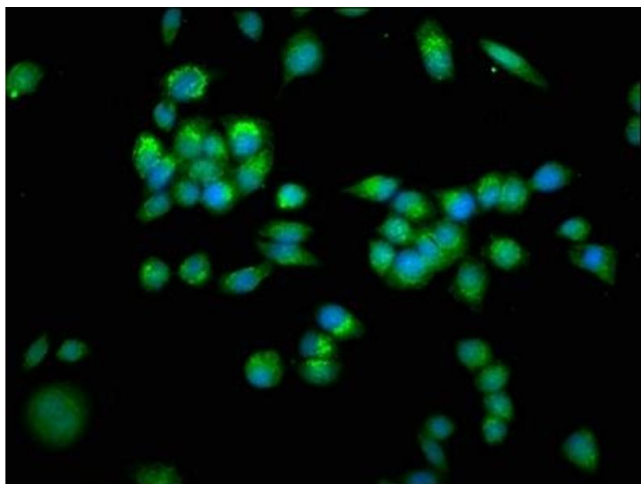
#### Immunohistochemistry

**Image 1.** Immunohistochemistry of paraffin-embedded human small intestine tissue using ABIN7143534 at dilution of 1:100



#### Immunohistochemistry

**Image 2.** Immunohistochemistry of paraffin-embedded human breast cancer using ABIN7143534 at dilution of 1:100



#### Immunofluorescence

**Image 3.** Immunofluorescence staining of PC-3 cells with ABIN7143534 at 1:266, counter-stained with DAPI. The cells were fixed in 4% formaldehyde, permeabilized using 0.2% Triton X-100 and blocked in 10% normal Goat Serum. The cells were then incubated with the antibody overnight at 4°C. The secondary antibody was Alexa Fluor 488-conjugated AffiniPure Goat Anti-Rabbit IgG(H+L).