

Datasheet for ABIN7143538
anti-SLC25A5 antibody (AA 144-175)[Go to Product page](#)

2 Images

Overview

Quantity:	100 µg
Target:	SLC25A5
Binding Specificity:	AA 144-175
Reactivity:	Human
Host:	Rabbit
Clonality:	Polyclonal
Conjugate:	This SLC25A5 antibody is un-conjugated
Application:	ELISA, Western Blotting (WB), Immunohistochemistry (IHC)

Product Details

Immunogen:	Recombinant Human ADP/ATP translocase 2 protein (144-175AA)
Isotype:	IgG
Cross-Reactivity:	Human
Purification:	>95%, Protein G purified

Target Details

Target:	SLC25A5
Alternative Name:	SLC25A5 (SLC25A5 Products)
Background:	Background: Catalyzes the exchange of cytoplasmic ADP with mitochondrial ATP across the mitochondrial inner membrane. As part of the mitotic spindle-associated MMXD complex it

Target Details

may play a role in chromosome segregation.

Aliases: 2F1 antibody, AAC2 antibody, Adenine nucleotide translocator 2 antibody, ADP antibody, ADP ATP carrier protein 2 antibody, ADP/ATP translocase 2 antibody, ADT2_HUMAN antibody, ANT 2 antibody, ANT2 antibody, ATP carrier protein 2 antibody, ATP carrier protein antibody, fibroblast isoform antibody, OTTHUMP00000024324 antibody, SLC25A5 antibody, Solute carrier family 25 (mitochondrial carrier adenine nucleotide translocator) member 5 antibody, Solute carrier family 25 member 5 antibody, T2 antibody, T3 antibody

UniProt: [P05141](#)

Application Details

Application Notes: Recommended dilution: WB:1:500-1:5000, IHC:1:500-1:1000,

Restrictions: For Research Use only

Handling

Format: Liquid

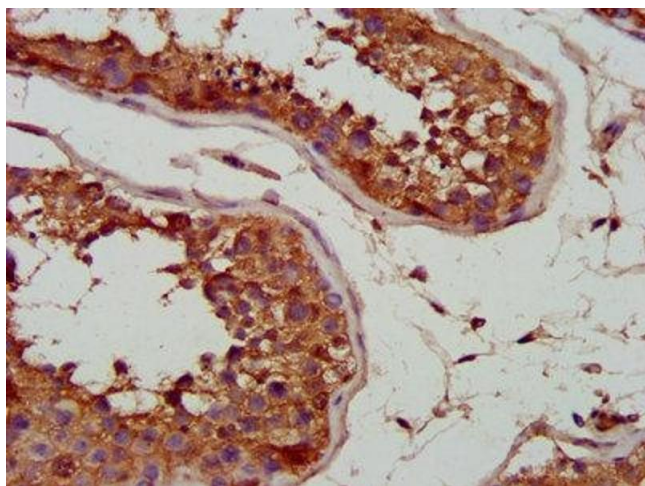
Buffer: Preservative: 0.03 % Proclin 300
Constituents: 50 % Glycerol, 0.01M PBS, PH 7.4

Preservative: ProClin

Precaution of Use: This product contains ProClin: a POISONOUS AND HAZARDOUS SUBSTANCE which should be handled by trained staff only.

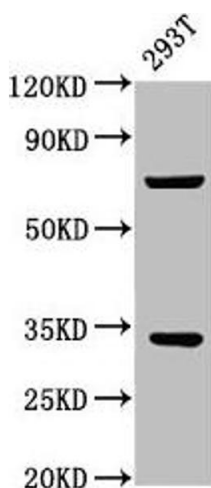
Storage: -20 °C, -80 °C

Storage Comment: Upon receipt, store at -20°C or -80°C. Avoid repeated freeze.



Immunohistochemistry

Image 1. IHC image of ABIN7143538 diluted at 1:700 and staining in paraffin-embedded human testis tissue performed on a Leica Bond™ system. After dewaxing and hydration, antigen retrieval was mediated by high pressure in a citrate buffer (pH 6.0). Section was blocked with 10 % normal goat serum 30 min at RT. Then primary antibody (1 % BSA) was incubated at 4 °C overnight. The primary is detected by a biotinylated secondary antibody and visualized using an HRP conjugated SP system.



Western Blotting

Image 2. Western Blot Positive WB detected in: 293T whole cell lysate All lanes: SLC25A5 antibody at 3.5 µg/mL Secondary Goat polyclonal to rabbit IgG at 1/50000 dilution Predicted band size: 33 kDa Observed band size: 33 kDa