

Datasheet for ABIN7143550  
**anti-Scinderin antibody (AA 556-703)**[Go to Product page](#)

## 2 Images

## Overview

Quantity:	100 µg
Target:	Scinderin (SCIN)
Binding Specificity:	AA 556-703
Reactivity:	Human
Host:	Rabbit
Clonality:	Polyclonal
Conjugate:	This Scinderin antibody is un-conjugated
Application:	Western Blotting (WB), ELISA, Immunofluorescence (IF)

## Product Details

Immunogen:	Recombinant Human Adseverin protein (556-703AA)
Isotype:	IgG
Cross-Reactivity:	Human, Mouse
Purification:	>95%, Protein G purified

## Target Details

Target:	Scinderin (SCIN)
Alternative Name:	SCIN ( <a href="#">SCIN Products</a> )
Background:	Background: Ca(2+)-dependent actin filament-severing protein that is presumed to have a regulatory function in exocytosis by affecting the organization of the microfilament network

## Target Details

underneath the plasma membrane. In vitro, also has barbed end capping and nucleating activities in the presence of Ca(2+). Regulates chondrocyte proliferation and differentiation. MAP kinases p38 and ERK1/2 mediate the adseverin-induced accelerated differentiation of non-hypertrophic chondrocytes (By similarity).

Aliases: Adseverin antibody, ADSV\_HUMAN antibody, KIAA1905 antibody, Scin antibody, Scinderin antibody

UniProt: [Q9Y6U3](#)

Pathways: [Regulation of Actin Filament Polymerization](#)

## Application Details

Application Notes: Recommended dilution: WB:1:1000-1:5000, IF:1:50-1:500,

Restrictions: For Research Use only

## Handling

Format: Liquid

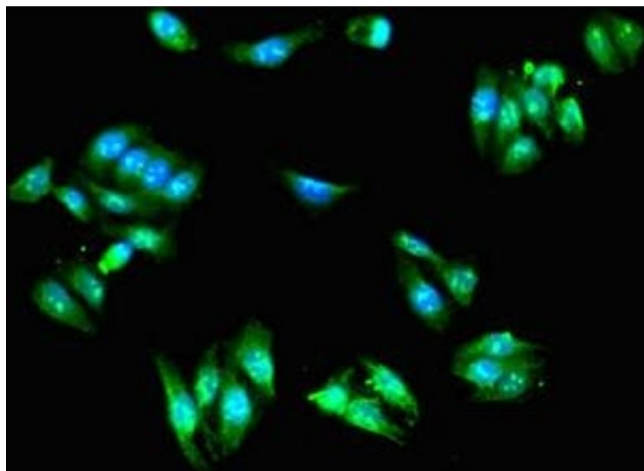
Buffer: Preservative: 0.03 % Proclin 300  
Constituents: 50 % Glycerol, 0.01M PBS, PH 7.4

Preservative: ProClin

Precaution of Use: This product contains ProClin: a POISONOUS AND HAZARDOUS SUBSTANCE which should be handled by trained staff only.

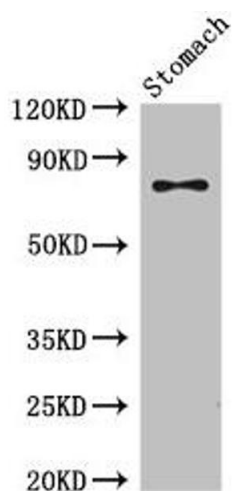
Storage: -20 °C,-80 °C

Storage Comment: Upon receipt, store at -20°C or -80°C. Avoid repeated freeze.



#### Immunofluorescence

**Image 1.** Immunofluorescent analysis of HepG2 cells using ABIN7143550 at dilution of 1:100 and Alexa Fluor 488-conjugated AffiniPure Goat Anti-Rabbit IgG(H+L)



#### Western Blotting

**Image 2.** Western Blot Positive WB detected in: Mouse stomach tissue All lanes: SCIN antibody at 3.5 µg/mL Secondary Goat polyclonal to rabbit IgG at 1/50000 dilution Predicted band size: 81, 66, 53 kDa Observed band size: 81 kDa