

Datasheet for ABIN7143562
anti-AFF2 antibody (AA 575-705)[Go to Product page](#)

1 Image

Overview

Quantity:	100 µg
Target:	AFF2
Binding Specificity:	AA 575-705
Reactivity:	Human
Host:	Rabbit
Clonality:	Polyclonal
Conjugate:	This AFF2 antibody is un-conjugated
Application:	Western Blotting (WB), ELISA

Product Details

Immunogen:	Recombinant Human AF4/FMR2 family member 2 protein (575-705AA)
Isotype:	IgG
Cross-Reactivity:	Human
Purification:	>95%, Protein G purified

Target Details

Target:	AFF2
Alternative Name:	AFF2 (AFF2 Products)
Background:	Background: RNA-binding protein. Might be involved in alternative splicing regulation through an interaction with G-quartet RNA structure.

Target Details

Aliases: AF4/FMR2 family member 2 antibody, AF4/FMR2 family, member 2 antibody, AFF2 antibody, AFF2_HUMAN antibody, FMR2 antibody, FMR2P antibody, Fragile X E mental retardation syndrome protein antibody, fragile X mental retardation 2 antibody, Fragile X mental retardation 2 protein antibody, fragile X mental retardation gene associated with FRAXE antibody, FRAXE antibody, mild or borderline mental retardation antibody, MRX2 antibody, OTTHUMP00000024204 antibody, OX19 antibody, Protein FMR-2 antibody, Protein Ox19 antibody

UniProt: [P51816](#)

Application Details

Application Notes: Recommended dilution: WB:1:500-1:5000,

Restrictions: For Research Use only

Handling

Format: Liquid

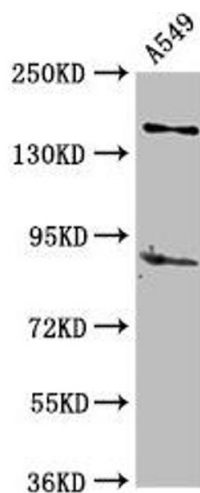
Buffer: Preservative: 0.03 % Proclin 300
Constituents: 50 % Glycerol, 0.01M PBS, pH 7.4

Preservative: ProClin

Precaution of Use: This product contains ProClin: a POISONOUS AND HAZARDOUS SUBSTANCE which should be handled by trained staff only.

Storage: -20 °C, -80 °C

Storage Comment: Upon receipt, store at -20°C or -80°C. Avoid repeated freeze.



Western Blotting

Image 1. Western Blot Positive WB detected in: A549 whole cell lysate All lanes: AFF2 antibody at 5 µg/mL Secondary Goat polyclonal to rabbit IgG at 1/50000 dilution Predicted band size: 145, 141, 48, 144, 106 kDa Observed band size: 145 kDa