

Datasheet for ABIN7143574
anti-SSX2IP antibody (AA 485-614)[Go to Product page](#)

4 Images

Overview

| | |
|----------------------|---|
| Quantity: | 100 µg |
| Target: | SSX2IP |
| Binding Specificity: | AA 485-614 |
| Reactivity: | Human |
| Host: | Rabbit |
| Clonality: | Polyclonal |
| Conjugate: | This SSX2IP antibody is un-conjugated |
| Application: | ELISA, Western Blotting (WB), Immunohistochemistry (IHC), Immunofluorescence (IF) |

Product Details

| | |
|-------------------|---|
| Immunogen: | Recombinant Human Afadin- and alpha-actinin-binding protein (485-614AA) |
| Isotype: | IgG |
| Cross-Reactivity: | Human, Rat |
| Purification: | >95%, Protein G purified |

Target Details

| | |
|-------------------|---|
| Target: | SSX2IP |
| Alternative Name: | SSX2IP (SSX2IP Products) |
| Background: | Background: Belongs to an adhesion system, which plays a role in the organization of homotypic, interneuronal and heterotypic cell-cell adherens junctions (AJs). May connect the |

Target Details

nectin-afadin and E-cadherin-catenin system through alpha-actinin and may be involved in organization of the actin cytoskeleton at AJs through afadin and alpha-actinin (By similarity). Involved in cell movement: localizes at the leading edge of moving cells in response to PDGF and is required for the formation of the leading edge and the promotion of cell movement, possibly via activation of Rac signaling (By similarity). Acts as a centrosome maturation factor, probably by maintaining the integrity of the pericentriolar material and proper microtubule nucleation at mitotic spindle poles. The function seems to implicate at least in part WRAP73, the SSX2IP:WRAP73 complex is proposed to act as regulator of spindle anchoring at the mitotic centrosome (PubMed:23816619, PubMed:26545777). Involved in ciliogenesis (PubMed:24356449). It is required for targeted recruitment of the BBSome, CEP290, RAB8, and SSTR3 to the cilia (PubMed:24356449).

Aliases: ADIP antibody, ADIP_HUMAN antibody, Afadin and alpha actinin binding protein antibody, Afadin DIL domain interacting protein antibody, Afadin DIL domain-interacting protein antibody, Afadin- and alpha-actinin-binding protein antibody, FLJ10848 antibody, KIAA0923 antibody, MGC75026 antibody, OTTHUMP00000011574 antibody, SSX 2 interacting protein antibody, SSX2 interacting protein antibody, SSX2-interacting protein antibody, SSX2IP antibody, Synovial sarcoma X breakpoint 2 interacting protein antibody

UniProt: [Q9Y2D8](#)

Application Details

Application Notes: Recommended dilution: WB:1:500-1:5000, IHC:1:20-1:200, IF:1:50-1:200,

Restrictions: For Research Use only

Handling

Format: Liquid

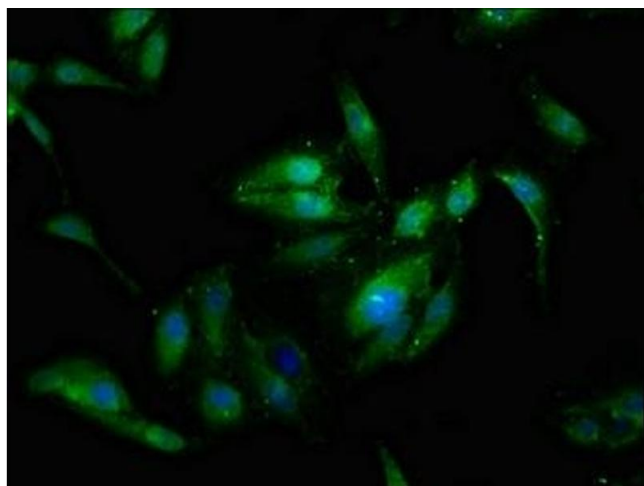
Buffer: Preservative: 0.03 % Proclin 300
Constituents: 50 % Glycerol, 0.01M PBS, pH 7.4

Preservative: ProClin

Precaution of Use: This product contains ProClin: a POISONOUS AND HAZARDOUS SUBSTANCE which should be handled by trained staff only.

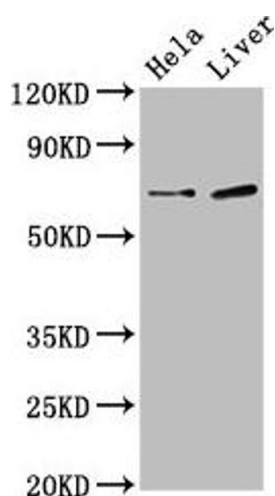
Storage: -20 °C, -80 °C

Storage Comment: Upon receipt, store at -20°C or -80°C. Avoid repeated freeze.



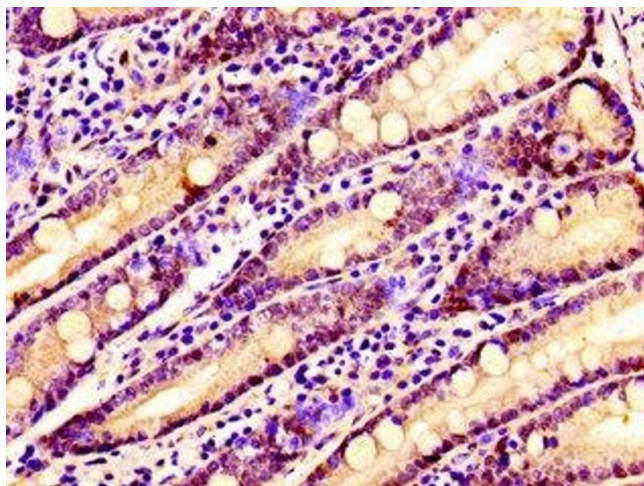
Immunofluorescence

Image 1. Immunofluorescence staining of HeLa cells with ABIN7143574 at 1:133, counter-stained with DAPI. The cells were fixed in 4% formaldehyde, permeabilized using 0.2% Triton X-100 and blocked in 10% normal Goat Serum. The cells were then incubated with the antibody overnight at 4°C. The secondary antibody was Alexa Fluor 488-conjugated AffiniPure Goat Anti-Rabbit IgG(H+L).



Western Blotting

Image 2. Western Blot Positive WB detected in: HeLa whole cell lysate, Rat liver tissue All lanes: SSX2IP antibody at 3 µg/mL Secondary Goat polyclonal to rabbit IgG at 1/50000 dilution Predicted band size: 72, 66, 69 kDa Observed band size: 72 kDa



Immunohistochemistry

Image 3. IHC image of ABIN7143574 diluted at 1:100 and staining in paraffin-embedded human small intestine tissue performed on a Leica Bond™ system. After dewaxing and hydration, antigen retrieval was mediated by high pressure in a citrate buffer (pH 6.0). Section was blocked with 10% normal goat serum 30min at RT. Then primary antibody (1% BSA) was incubated at 4°C overnight. The primary is detected by a biotinylated secondary antibody and visualized using an HRP conjugated SP system.

Please check the [product details page](#) for more images. Overall 4 images are available for ABIN7143574.