

Datasheet for ABIN7143586  
**anti-AKR7A2 antibody (AA 100-359)**[Go to Product page](#)

## 3 Images

## Overview

Quantity:	100 µL
Target:	AKR7A2
Binding Specificity:	AA 100-359
Reactivity:	Human
Host:	Rabbit
Clonality:	Polyclonal
Conjugate:	This AKR7A2 antibody is un-conjugated
Application:	Western Blotting (WB), Immunohistochemistry (IHC), ELISA

## Product Details

Immunogen:	Recombinant Human Aflatoxin B1 aldehyde reductase member 2 protein (100-359AA)
Isotype:	IgG
Cross-Reactivity:	Human, Mouse
Purification:	Antigen Affinity Purified

## Target Details

Target:	AKR7A2
Alternative Name:	AKR7A2 ( <a href="#">AKR7A2 Products</a> )
Background:	Background: Catalyzes the NADPH-dependent reduction of succinic semialdehyde to gamma-hydroxybutyrate. May have an important role in producing the neuromodulator gamma-

## Target Details

hydroxybutyrate (GHB). Has broad substrate specificity. Has NADPH-dependent aldehyde reductase activity towards 2-carboxybenzaldehyde, 2-nitrobenzaldehyde and pyridine-2-aldehyde (in vitro). Can reduce 1,2-naphthoquinone and 9,10-phenanthrenequinone (in vitro). Can reduce the dialdehyde protein-binding form of aflatoxin B1 (AFB1) to the non-binding AFB1 dialcohol. May be involved in protection of liver against the toxic and carcinogenic effects of AFB1, a potent hepatocarcinogen.

Aliases: AFAR antibody, AFAR1 antibody, AFB1 aldehyde reductase 1 antibody, AFB1 AR1 antibody, AFB1-AR 1 antibody, AFB1AR1 antibody, Aflatoxin aldehyde reductase antibody, Aflatoxin B1 aldehyde reductase member 2 antibody, Aflatoxin beta1 aldehyde reductase antibody, Aiar antibody, AKR7 antibody, Akr7a2 antibody, Aldo keto reductase family 7 antibody, Aldo keto reductase family 7 member A2 aflatoxin aldehyde reductase antibody, Aldo keto reductase family 7 member A2 antibody, Aldo keto reductase family 7, member A2 (aflatoxin aldehyde reductase) antibody, Aldoketoreductase 7 antibody, ARK72\_HUMAN antibody, SSA reductase antibody, Succinic semialdehyde reductase antibody

UniProt: [O43488](#)

## Application Details

Application Notes: Recommended dilution: WB:1:1000-1:5000, IHC:1:20-1:200,

Restrictions: For Research Use only

## Handling

Format: Liquid

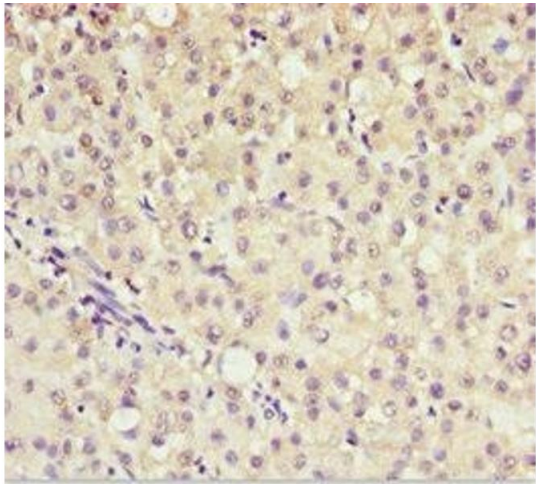
Buffer: PBS with 0.02 % sodium azide, 50 % glycerol, pH 7.3.

Preservative: Sodium azide

Precaution of Use: This product contains Sodium azide: a POISONOUS AND HAZARDOUS SUBSTANCE which should be handled by trained staff only.

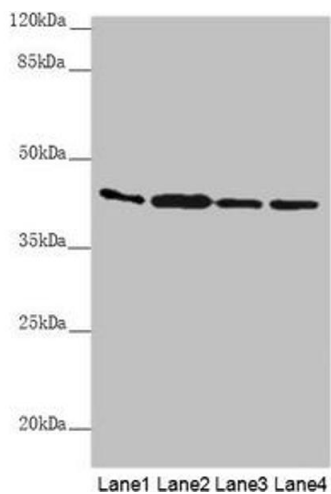
Storage: -20 °C,-80 °C

Storage Comment: Upon receipt, store at -20°C or -80°C. Avoid repeated freeze.



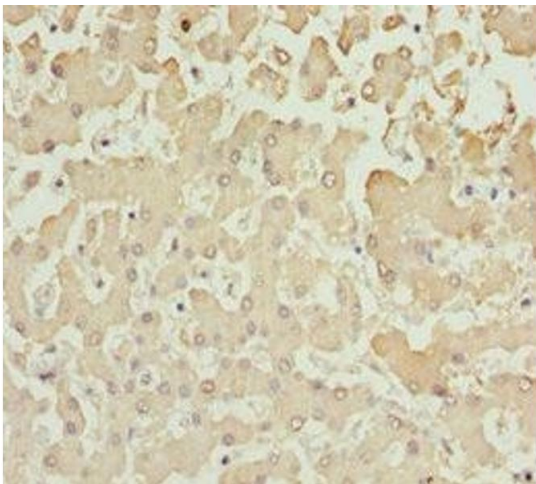
#### Immunohistochemistry

**Image 1.** Immunohistochemistry of paraffin-embedded human liver cancer using ABIN7143586 at dilution of 1:100



#### Western Blotting

**Image 2.** Western blot All lanes: AKR7A2 antibody at 0.88  $\mu$ g/mL Lane 1: Mouse small intestine tissue Lane 2: Mouse liver tissue Lane 3: Mouse gonadal tissue Lane 4: A431 whole cell lysate Secondary Goat polyclonal to rabbit IgG at 1/10000 dilution Predicted band size: 40 kDa Observed band size: 40 kDa



#### Immunohistochemistry

**Image 3.** Immunohistochemistry of paraffin-embedded human liver tissue using ABIN7143586 at dilution of 1:100