

Datasheet for ABIN7143616
anti-ALT antibody (AA 2-496)

5 Images

[Go to Product page](#)

Overview

Quantity:	100 µg
Target:	ALT
Binding Specificity:	AA 2-496
Reactivity:	Human
Host:	Rabbit
Clonality:	Polyclonal
Conjugate:	This ALT antibody is un-conjugated
Application:	Western Blotting (WB), Immunohistochemistry (IHC), ELISA, Immunoprecipitation (IP), Immunofluorescence (IF)

Product Details

Immunogen:	Recombinant Human Alanine aminotransferase 1 protein (2-496AA)
Isotype:	IgG
Cross-Reactivity:	Human, Mouse, Rat
Purification:	>95%, Protein G purified

Target Details

Target:	ALT
Alternative Name:	GPT (ALT Products)
Background:	Background: This protein is an anticoagulant protein that acts as an indirect inhibitor of the

Target Details

thromboplastin-specific complex, which is involved in the blood coagulation cascade.

Aliases: AAT1 antibody, Alanine aminotransferase 1 antibody, Alanine aminotransferase antibody, ALAT1_HUMAN antibody, ALT1 antibody, Glutamate pyruvate transaminase 1 antibody, Glutamic alanine transaminase 1 antibody, Glutamic pyruvate transaminase (alanine aminotransferase) antibody, Glutamic pyruvic transaminase 1 antibody, Glutamic-alanine transaminase 1 antibody, Glutamic-pyruvic transaminase 1 antibody, GPT 1 antibody, gpt antibody, GPT1 antibody

UniProt: [P24298](#)

Application Details

Application Notes: Recommended dilution: WB:1:500-1:5000, IHC:1:200-1:500, IF:1:50-1:200, IP:1:200-1:2000,

Restrictions: For Research Use only

Handling

Format: Liquid

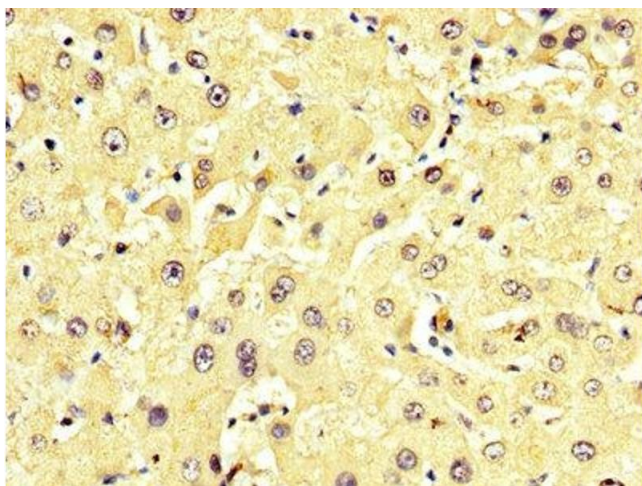
Buffer: Preservative: 0.03 % Proclin 300
Constituents: 50 % Glycerol, 0.01M PBS, PH 7.4

Preservative: ProClin

Precaution of Use: This product contains ProClin: a POISONOUS AND HAZARDOUS SUBSTANCE which should be handled by trained staff only.

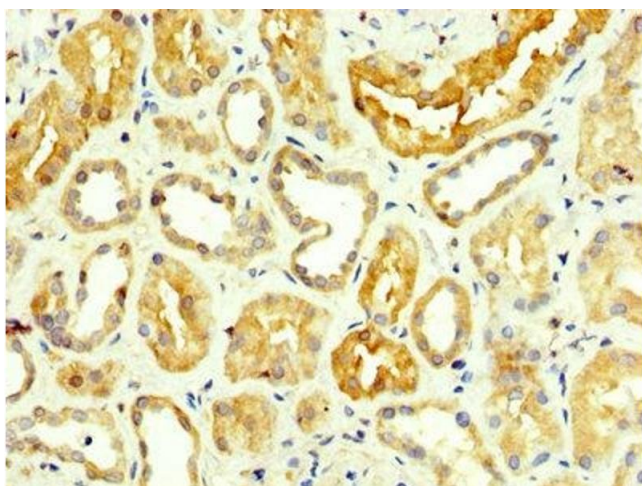
Storage: -20 °C,-80 °C

Storage Comment: Upon receipt, store at -20°C or -80°C. Avoid repeated freeze.



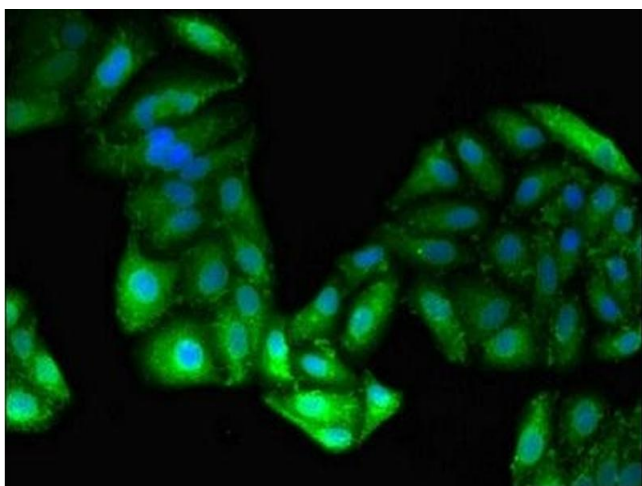
Immunohistochemistry

Image 1. IHC image of ABIN7143616 diluted at 1:350 and staining in paraffin-embedded human liver tissue performed on a Leica Bond™ system. After dewaxing and hydration, antigen retrieval was mediated by high pressure in a citrate buffer (pH 6.0). Section was blocked with 10% normal goat serum 30min at RT. Then primary antibody (1% BSA) was incubated at 4°C overnight. The primary is detected by a biotinylated secondary antibody and visualized using an HRP conjugated SP system.



Immunohistochemistry

Image 2. IHC image of ABIN7143616 diluted at 1:350 and staining in paraffin-embedded human kidney tissue performed on a Leica Bond™ system. After dewaxing and hydration, antigen retrieval was mediated by high pressure in a citrate buffer (pH 6.0). Section was blocked with 10% normal goat serum 30min at RT. Then primary antibody (1% BSA) was incubated at 4°C overnight. The primary is detected by a biotinylated secondary antibody and visualized using an HRP conjugated SP system.



Immunofluorescence

Image 3. Immunofluorescent analysis of HepG2 cells using ABIN7143616 at dilution of 1:100 and Alexa Fluor 488-conjugated AffiniPure Goat Anti-Rabbit IgG(H+L)

Please check the [product details page](#) for more images. Overall 5 images are available for ABIN7143616.