

Datasheet for ABIN7143620
anti-GPT2 antibody (AA 95-208)[Go to Product page](#)

2 Images

Overview

Quantity:	100 µg
Target:	GPT2
Binding Specificity:	AA 95-208
Reactivity:	Human
Host:	Rabbit
Clonality:	Polyclonal
Conjugate:	This GPT2 antibody is un-conjugated
Application:	Western Blotting (WB), ELISA, Immunohistochemistry (IHC)

Product Details

Immunogen:	Recombinant Human Alanine aminotransferase 2 protein (95-208AA)
Isotype:	IgG
Cross-Reactivity:	Human
Purification:	>95%, Protein G purified

Target Details

Target:	GPT2
Alternative Name:	GPT2 (GPT2 Products)
Background:	Background: Catalyzes the reversible transamination between alanine and 2-oxoglutarate to form pyruvate and glutamate.

Target Details

Aliases: AAT2 antibody, Alanine aminotransferase 2 antibody, ALAT2_HUMAN antibody, ALT2 antibody, Glutamate pyruvate transaminase 2 antibody, Glutamic alanine transaminase 2 antibody, Glutamic pyruvate transaminase (alanine aminotransferase) 2 antibody, Glutamic pyruvic transaminase 2 antibody, Glutamic--alanine transaminase 2 antibody, Glutamic--pyruvic transaminase 2 antibody, GPT 2 antibody, gpt2 antibody

UniProt: [Q8TD30](#)

Application Details

Application Notes: Recommended dilution: WB:1:500-1:5000, IHC:1:500-1:1000,

Restrictions: For Research Use only

Handling

Format: Liquid

Buffer: Preservative: 0.03 % Proclin 300
Constituents: 50 % Glycerol, 0.01M PBS, pH 7.4

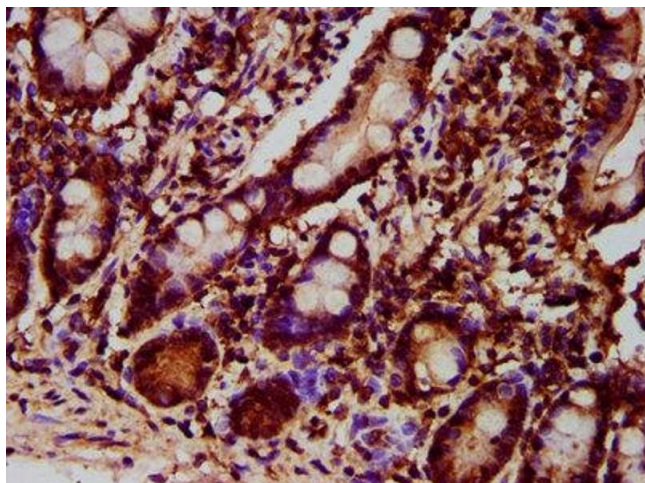
Preservative: ProClin

Precaution of Use: This product contains ProClin: a POISONOUS AND HAZARDOUS SUBSTANCE which should be handled by trained staff only.

Storage: -20 °C,-80 °C

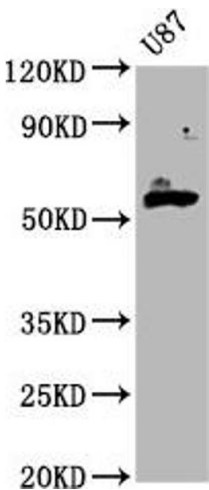
Storage Comment: Upon receipt, store at -20°C or -80°C. Avoid repeated freeze.

Images



Immunohistochemistry

Image 1. IHC image of ABIN7143620 diluted at 1:700 and staining in paraffin-embedded human small intestine tissue performed on a Leica Bond™ system. After dewaxing and hydration, antigen retrieval was mediated by high pressure in a citrate buffer (pH 6.0). Section was blocked with 10% normal goat serum 30min at RT. Then primary antibody (1% BSA) was incubated at 4°C overnight. The primary is detected by a biotinylated secondary antibody and



visualized using an HRP conjugated SP system.

Western Blotting

Image 2. Western Blot Positive WB detected in: U87 whole cell lysate All lanes: GPT2 antibody at 4.5 µg/mL Secondary Goat polyclonal to rabbit IgG at 1/50000 dilution Predicted band size: 58, 47 kDa Observed band size: 58 kDa