

Datasheet for ABIN7143628  
**anti-AARS antibody (AA 164-321)**[Go to Product page](#)

## 3 Images

## Overview

Quantity:	100 µg
Target:	AARS
Binding Specificity:	AA 164-321
Reactivity:	Human
Host:	Rabbit
Clonality:	Polyclonal
Conjugate:	This AARS antibody is un-conjugated
Application:	ELISA, Immunohistochemistry (IHC), Immunofluorescence (IF)

## Product Details

Immunogen:	Recombinant Human Alanine--tRNA ligase, cytoplasmic protein (164-321AA)
Isotype:	IgG
Cross-Reactivity:	Human
Purification:	>95%, Protein G purified

## Target Details

Target:	AARS
Alternative Name:	AARS ( <a href="#">AARS Products</a> )
Background:	Background: Catalyzes the attachment of alanine to tRNA(Ala) in a two-step reaction: alanine is first activated by ATP to form Ala-AMP and then transferred to the acceptor end of tRNA(Ala).

## Target Details

Also edits incorrectly charged tRNA(Ala) via its editing domain.

Aliases: AARS antibody, AI316495 antibody, Alanine tRNA ligase 1, cytoplasmic antibody, Alanine tRNA ligase antibody, Alanine tRNA ligase cytoplasmic antibody, Alanine-tRNA ligase antibody, Alanyl tRNA synthetase antibody, Alanyl tRNA synthetase cytoplasmic antibody, Alanyl-tRNA synthetase antibody, AlaRS antibody, C76919 antibody, CMT2N antibody, cytoplasmic antibody, EC 6.1.1.7 antibody, MGC37368 antibody, Renal carcinoma antigen NY REN 42 antibody, Renal carcinoma antigen NY-REN-42 antibody, SYAC\_HUMAN antibody

UniProt: [P49588](#)

## Application Details

Application Notes: Recommended dilution: IHC:1:20-1:200, IF:1:20-1:200,

Restrictions: For Research Use only

## Handling

Format: Liquid

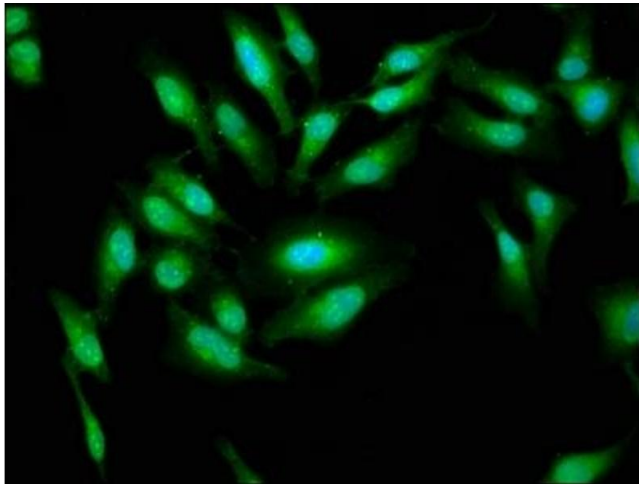
Buffer: Preservative: 0.03 % Proclin 300  
Constituents: 50 % Glycerol, 0.01M PBS, pH 7.4

Preservative: ProClin

Precaution of Use: This product contains ProClin: a POISONOUS AND HAZARDOUS SUBSTANCE which should be handled by trained staff only.

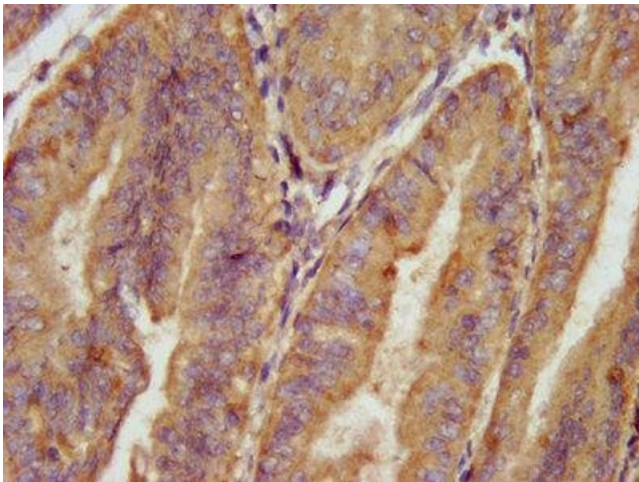
Storage: -20 °C, -80 °C

Storage Comment: Upon receipt, store at -20°C or -80°C. Avoid repeated freeze.



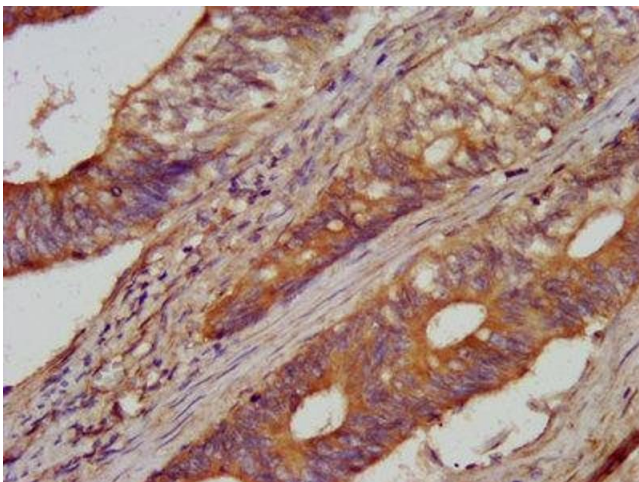
#### Immunofluorescence

**Image 1.** Immunofluorescence staining of HeLa cells with ABIN7143628 at 1:33, counter-stained with DAPI. The cells were fixed in 4% formaldehyde, permeabilized using 0.2% Triton X-100 and blocked in 10% normal Goat Serum. The cells were then incubated with the antibody overnight at 4°C. The secondary antibody was Alexa Fluor 488-conjugated AffiniPure Goat Anti-Rabbit IgG(H+L).



#### Immunohistochemistry

**Image 2.** IHC image of ABIN7143628 diluted at 1:100 and staining in paraffin-embedded human endometrial cancer performed on a Leica Bond™ system. After dewaxing and hydration, antigen retrieval was mediated by high pressure in a citrate buffer (pH 6.0). Section was blocked with 10% normal goat serum 30min at RT. Then primary antibody (1% BSA) was incubated at 4°C overnight. The primary is detected by a biotinylated secondary antibody and visualized using an HRP conjugated SP system.



#### Immunohistochemistry

**Image 3.** IHC image of ABIN7143628 diluted at 1:100 and staining in paraffin-embedded human colon cancer performed on a Leica Bond™ system. After dewaxing and hydration, antigen retrieval was mediated by high pressure in a citrate buffer (pH 6.0). Section was blocked with 10% normal goat serum 30min at RT. Then primary antibody (1% BSA) was incubated at 4°C overnight. The primary is detected by a biotinylated secondary antibody and visualized using an HRP conjugated SP system.