



[Go to Product page](#)

Datasheet for ABIN7143641  
**anti-ADH1A antibody (AA 104-253)**

3 Images

### Overview

Quantity:	100 µg
Target:	ADH1A
Binding Specificity:	AA 104-253
Reactivity:	Human
Host:	Rabbit
Clonality:	Polyclonal
Conjugate:	This ADH1A antibody is un-conjugated
Application:	ELISA, Immunohistochemistry (IHC), Immunofluorescence (IF)

### Product Details

Immunogen:	Recombinant Human Alcohol dehydrogenase 1A protein (104-253AA)
Isotype:	IgG
Cross-Reactivity:	Human
Purification:	>95%, Protein G purified

### Target Details

Target:	ADH1A
Alternative Name:	ADH1A ( <a href="#">ADH1A Products</a> )
Background:	Background: cytosol, nucleoplasm, plasma membrane, alcohol dehydrogenase (NAD) activity, alcohol dehydrogenase activity, zinc-dependent, retinol dehydrogenase activity, alcohol

## Target Details

---

metabolic process, drug metabolic process, ethanol oxidation

Aliases: ADH alpha subunit antibody, ADH antibody, ADH1 antibody, ADH1A antibody, ADH1A\_HUMAN antibody, Alcohol dehydrogenase 1 (class I), alpha polypeptide antibody, Alcohol dehydrogenase 1 antibody, Alcohol dehydrogenase 1A (class I), alpha polypeptide antibody, Alcohol dehydrogenase 1A antibody, Alcohol dehydrogenase subunit alpha antibody, Aldehyde reductase antibody

---

UniProt: [P07327](#)

## Application Details

---

Application Notes: Recommended dilution: IHC:1:200-1:500, IF:1:50-1:200,

Restrictions: For Research Use only

## Handling

---

Format: Liquid

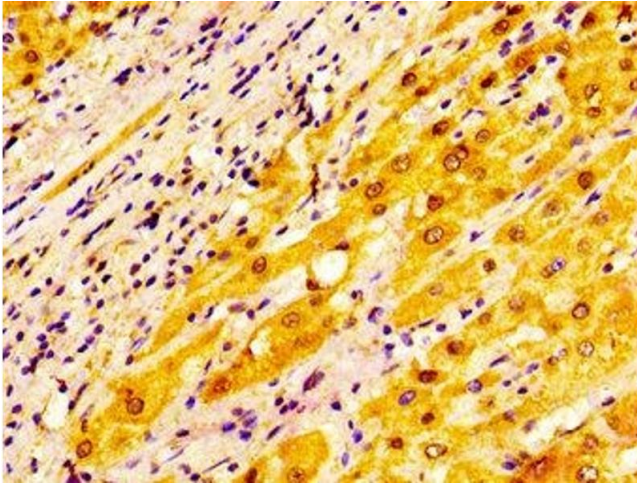
Buffer: Preservative: 0.03 % Proclin 300  
Constituents: 50 % Glycerol, 0.01M PBS, pH 7.4

Preservative: ProClin

Precaution of Use: This product contains ProClin: a POISONOUS AND HAZARDOUS SUBSTANCE which should be handled by trained staff only.

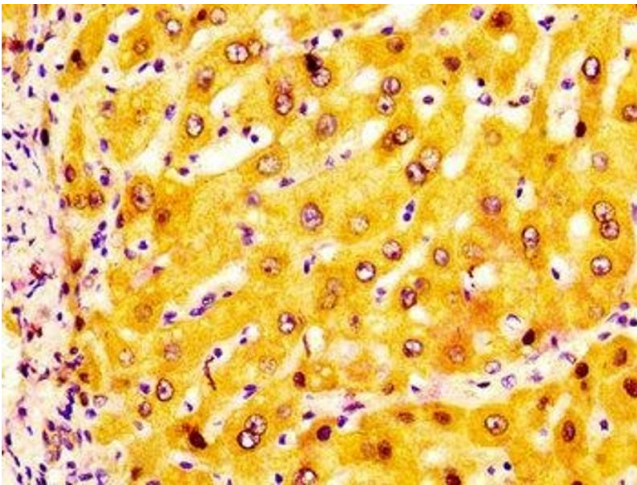
Storage: -20 °C,-80 °C

Storage Comment: Upon receipt, store at -20°C or -80°C. Avoid repeated freeze.



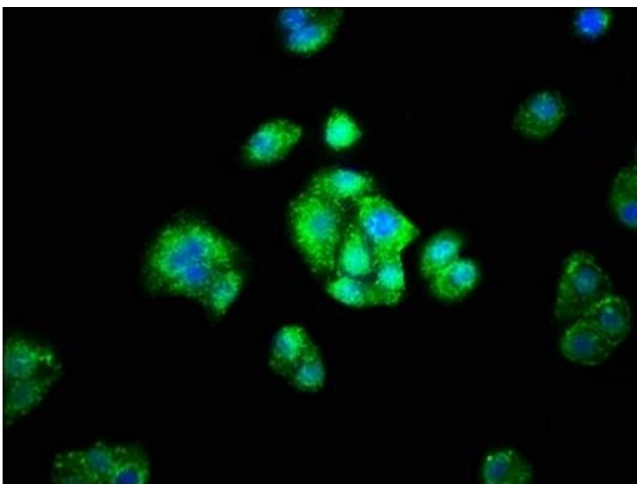
### Immunohistochemistry

**Image 1.** IHC image of ABIN7143641 diluted at 1:200 and staining in paraffin-embedded human liver cancer performed on a Leica Bond™ system. After dewaxing and hydration, antigen retrieval was mediated by high pressure in a citrate buffer (pH 6.0). Section was blocked with 10% normal goat serum 30min at RT. Then primary antibody (1% BSA) was incubated at 4°C overnight. The primary is detected by a biotinylated secondary antibody and visualized using an HRP conjugated SP system.



### Immunohistochemistry

**Image 2.** IHC image of ABIN7143641 diluted at 1:200 and staining in paraffin-embedded human liver tissue performed on a Leica Bond™ system. After dewaxing and hydration, antigen retrieval was mediated by high pressure in a citrate buffer (pH 6.0). Section was blocked with 10% normal goat serum 30min at RT. Then primary antibody (1% BSA) was incubated at 4°C overnight. The primary is detected by a biotinylated secondary antibody and visualized using an HRP conjugated SP system.



### Immunofluorescence

**Image 3.** Immunofluorescence staining of HepG2 cells with ABIN7143641 at 1:66, counter-stained with DAPI. The cells were fixed in 4% formaldehyde, permeabilized using 0.2% Triton X-100 and blocked in 10% normal Goat Serum. The cells were then incubated with the antibody overnight at 4°C. The secondary antibody was Alexa Fluor 488-conjugated AffiniPure Goat Anti-Rabbit IgG(H+L).