

Datasheet for ABIN7143645
anti-ADH1B antibody (AA 2-375)[Go to Product page](#)

4 Images

Overview

Quantity:	100 µg
Target:	ADH1B
Binding Specificity:	AA 2-375
Reactivity:	Human
Host:	Rabbit
Clonality:	Polyclonal
Conjugate:	This ADH1B antibody is un-conjugated
Application:	Western Blotting (WB), ELISA, Immunohistochemistry (IHC), Immunofluorescence (IF)

Product Details

Immunogen:	Recombinant Human Alcohol dehydrogenase 1B protein (2-375AA)
Isotype:	IgG
Cross-Reactivity:	Human
Purification:	>95%, Protein G purified

Target Details

Target:	ADH1B
Alternative Name:	ADH1B (ADH1B Products)
Background:	Background: The protein encoded by this gene is a member of the alcohol dehydrogenase family. Members of this enzyme family metabolize a wide variety of substrates, including

Target Details

ethanol, retinol, other aliphatic alcohols, hydroxysteroids, and lipid peroxidation products. This encoded protein, consisting of several homo- and heterodimers of alpha, beta, and gamma subunits, exhibits high activity for ethanol oxidation and plays a major role in ethanol catabolism. Three genes encoding alpha, beta and gamma subunits are tandemly organized in a genomic segment as a gene cluster. Two transcript variants encoding different isoforms have been found for this gene

Aliases: ADH beta subunit antibody, ADH1B antibody, ADH1B_HUMAN antibody, ADH2 antibody, Alcohol dehydrogenase 1B antibody, alcohol dehydrogenase 2 (class I), beta polypeptide antibody, Alcohol dehydrogenase 2 antibody, Alcohol dehydrogenase subunit beta antibody, Aldehyde reductase antibody, DKFZp686C06125 antibody, OTTHUMP00000220192 antibody

UniProt: [P00325](#)

Application Details

Application Notes: Recommended dilution: WB:1:1000-1:5000, IHC:1:20-1:200, IF:1:50-1:200,

Restrictions: For Research Use only

Handling

Format: Liquid

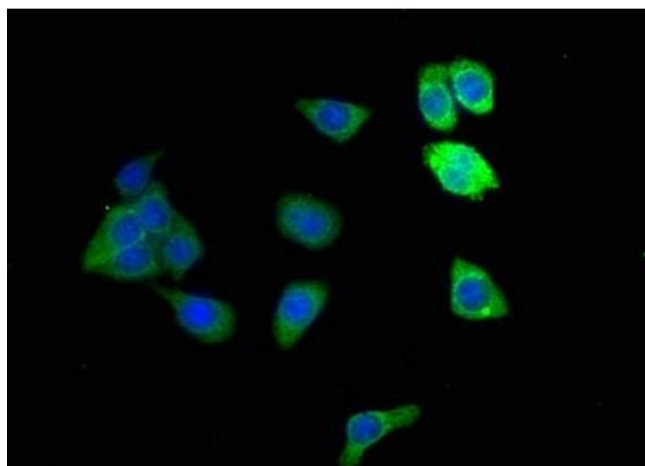
Buffer: Preservative: 0.03 % Proclin 300
Constituents: 50 % Glycerol, 0.01M PBS, PH 7.4

Preservative: ProClin

Precaution of Use: This product contains ProClin: a POISONOUS AND HAZARDOUS SUBSTANCE which should be handled by trained staff only.

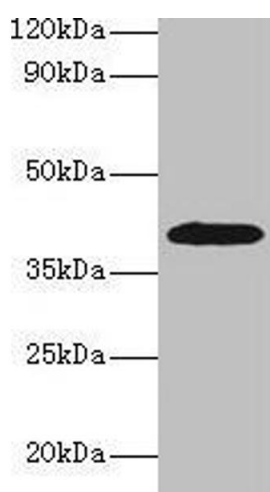
Storage: -20 °C,-80 °C

Storage Comment: Upon receipt, store at -20°C or -80°C. Avoid repeated freeze.



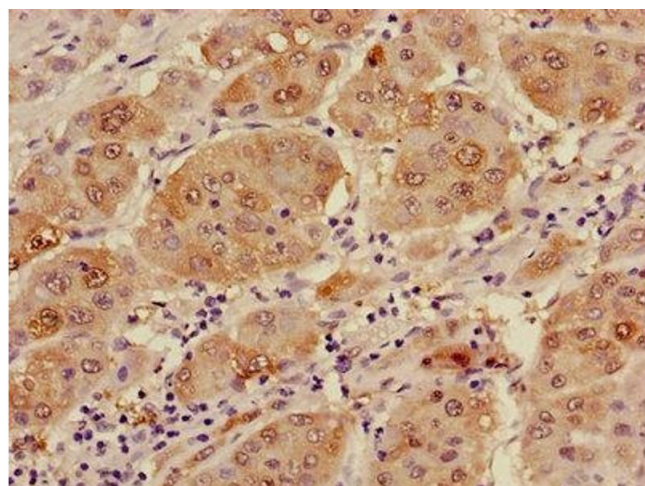
Immunofluorescence

Image 1. Immunofluorescence staining of HepG2 cells with ABIN7143645 at 1:166, counter-stained with DAPI. The cells were fixed in 4% formaldehyde, permeabilized using 0.2% Triton X-100 and blocked in 10% normal Goat Serum. The cells were then incubated with the antibody overnight at 4°C. The secondary antibody was Alexa Fluor 488-conjugated AffiniPure Goat Anti-Rabbit IgG(H+L).



Western Blotting

Image 2. Western blot All lanes: ADH1B antibody at 2 µg/mL + HepG2 whole cell lysate Secondary Goat polyclonal to rabbit IgG at 1/15000 dilution Predicted band size: 40, 36 kDa Observed band size: 40 kDa



Immunohistochemistry

Image 3. Immunohistochemistry of paraffin-embedded human liver cancer using ABIN7143645 at dilution of 1:100

Please check the [product details page](#) for more images. Overall 4 images are available for ABIN7143645.