

Datasheet for ABIN7143649  
**anti-ADH1C antibody (AA 1-375)**[Go to Product page](#)

## 2 Images

## Overview

Quantity:	100 µL
Target:	ADH1C
Binding Specificity:	AA 1-375
Reactivity:	Human
Host:	Rabbit
Clonality:	Polyclonal
Conjugate:	This ADH1C antibody is un-conjugated
Application:	Immunohistochemistry (IHC), ELISA

## Product Details

Immunogen:	Recombinant Human Alcohol dehydrogenase 1C protein (1-375AA)
Isotype:	IgG
Cross-Reactivity:	Human
Purification:	Antigen Affinity Purified

## Target Details

Target:	ADH1C
Alternative Name:	ADH1C ( <a href="#">ADH1C Products</a> )
Background:	Background: ADH1C(Alcohol dehydrogenase 1C) is also named as ADH3 and belongs to the zinc-containing alcohol dehydrogenase family.It catalyzes the rate-limiting step for ethanol

## Target Details

metabolism: the oxidation of alcohol to acetaldehyde. The ADH1C gene is active in intestine and kidney in fetal and early postnatal life, and persists in the stomach and liver in adult life.

Aliases: ADH gamma subunit antibody, ADH1C antibody, ADH1G\_HUMAN antibody, Adh3 antibody, Alcohol dehydrogenase 1C (class I) gamma polypeptide antibody, Alcohol dehydrogenase 1C antibody, Alcohol dehydrogenase 1C gamma polypeptide antibody, Alcohol dehydrogenase 3 (class I) gamma polypeptide antibody, Alcohol dehydrogenase 3 antibody, Alcohol dehydrogenase subunit gamma antibody, Aldehyde reductase antibody, Class I alcohol dehydrogenase antibody, OTTHUMP00000220209 antibody

UniProt: [P00326](#)

## Application Details

Application Notes: Recommended dilution: IHC:1:20-1:200,

Restrictions: For Research Use only

## Handling

Format: Liquid

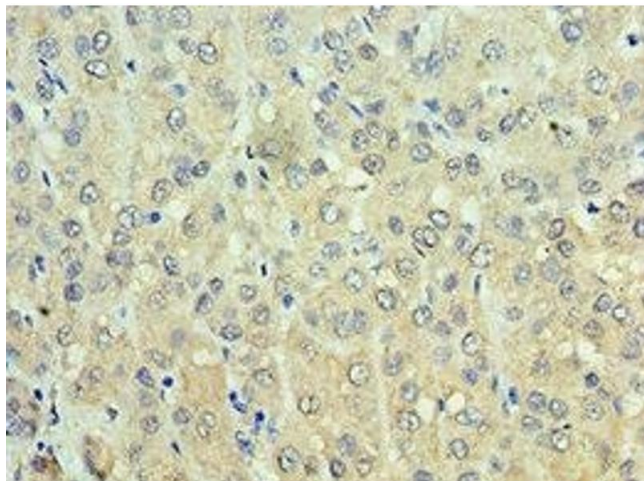
Buffer: PBS with 0.02 % sodium azide, 50 % glycerol, pH 7.3.

Preservative: Sodium azide

Precaution of Use: This product contains Sodium azide: a POISONOUS AND HAZARDOUS SUBSTANCE which should be handled by trained staff only.

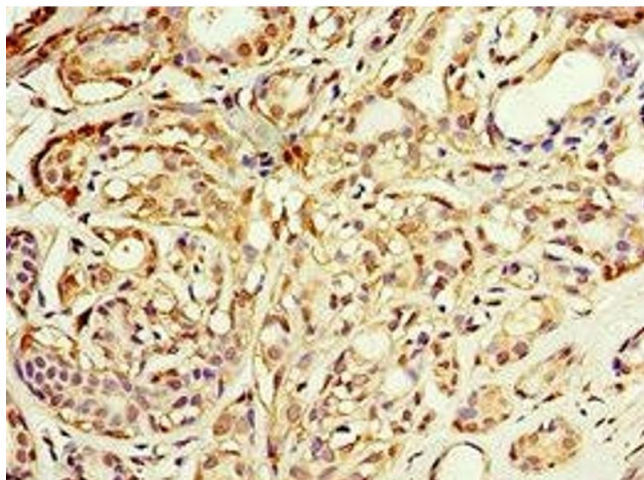
Storage: -20 °C, -80 °C

Storage Comment: Upon receipt, store at -20°C or -80°C. Avoid repeated freeze.



#### Immunohistochemistry

**Image 1.** Immunohistochemistry of paraffin-embedded human liver cancer using ABIN7143649 at dilution of 1:100



#### Immunohistochemistry

**Image 2.** Immunohistochemistry of paraffin-embedded human breast cancer using ABIN7143649 at dilution of 1:100