



[Go to Product page](#)

Datasheet for ABIN7143660  
**anti-ALDH1A3 antibody (AA 2-210)**

2 Images

Overview

Quantity:	100 µg
Target:	ALDH1A3
Binding Specificity:	AA 2-210
Reactivity:	Human
Host:	Rabbit
Clonality:	Polyclonal
Conjugate:	This ALDH1A3 antibody is un-conjugated
Application:	Western Blotting (WB), ELISA, Immunofluorescence (IF)

Product Details

Immunogen:	Recombinant Human Aldehyde dehydrogenase family 1 member A3 protein (2-210AA)
Isotype:	IgG
Cross-Reactivity:	Human, Mouse
Purification:	>95%, Protein G purified

Target Details

Target:	ALDH1A3
Alternative Name:	ALDH1A3 ( <a href="#">ALDH1A3 Products</a> )
Background:	Background: Recognizes as substrates free retinal and cellular retinol-binding protein-bound retinal. Seems to be the key enzyme in the formation of an RA gradient along the dorso-ventral

## Target Details

---

axis during the early eye development and also in the development of the olfactory system (By similarity).

Aliases: Acetaldehyde dehydrogenase 6 antibody, AL1A3\_HUMAN antibody, Aldehyde dehydrogenase 1A3 antibody, Aldehyde dehydrogenase 6 antibody, Aldehyde dehydrogenase family 1 member A3 antibody, Aldh1a3 antibody, ALDH1A6 antibody, ALDH6 antibody, RALDH 3 antibody, Retinaldehyde dehydrogenase 3 antibody, V1 antibody

---

UniProt: [P47895](#)

---

Pathways: [Retinoic Acid Receptor Signaling Pathway](#)

## Application Details

---

Application Notes: Recommended dilution: WB:1:2000-1:10000, IF:1:50-1:200,

---

Restrictions: For Research Use only

## Handling

---

Format: Liquid

---

Buffer: Preservative: 0.03 % Proclin 300  
Constituents: 50 % Glycerol, 0.01M PBS, PH 7.4

---

Preservative: ProClin

---

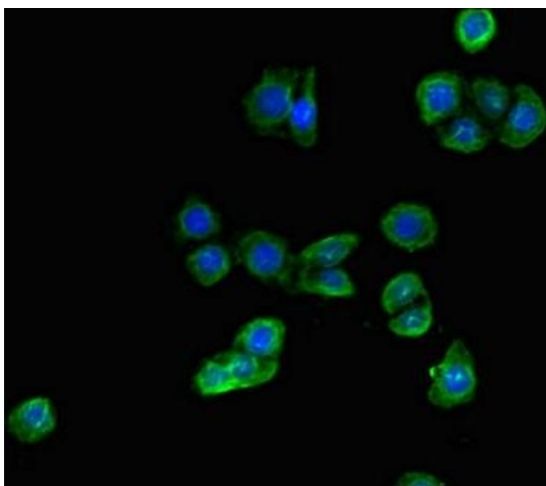
Precaution of Use: This product contains ProClin: a POISONOUS AND HAZARDOUS SUBSTANCE which should be handled by trained staff only.

---

Storage: -20 °C,-80 °C

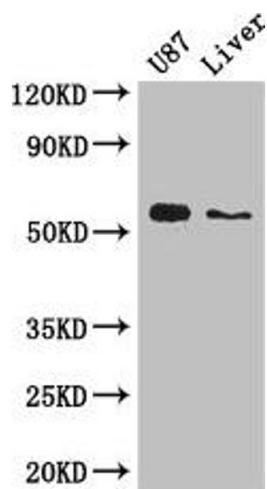
---

Storage Comment: Upon receipt, store at -20°C or -80°C. Avoid repeated freeze.



### Immunofluorescence

**Image 1.** Immunofluorescent analysis of PC-3 cells using ABIN7143660 at dilution of 1:100 and Alexa Fluor 488-conjugated AffiniPure Goat Anti-Rabbit IgG(H+L)



### Western Blotting

**Image 2.** Western Blot Positive WB detected in: U87 whole cell lysate, Mouse liver tissue All lanes: ALDH1A3 antibody at 3 µg/mL Secondary Goat polyclonal to rabbit IgG at 1/50000 dilution Predicted band size: 57 kDa Observed band size: 57 kDa