



[Go to Product page](#)

Datasheet for ABIN7143664  
**anti-ALDH16A1 antibody (AA 1-220)**

1 Image

### Overview

Quantity:	100 µg
Target:	ALDH16A1
Binding Specificity:	AA 1-220
Reactivity:	Human
Host:	Rabbit
Clonality:	Polyclonal
Conjugate:	This ALDH16A1 antibody is un-conjugated
Application:	ELISA, Immunofluorescence (IF)

### Product Details

Immunogen:	Recombinant Human Aldehyde dehydrogenase family 16 member A1 protein (1-220AA)
Isotype:	IgG
Cross-Reactivity:	Human
Purification:	>95%, Protein G purified

### Target Details

Target:	ALDH16A1
Alternative Name:	ALDH16A1 ( <a href="#">ALDH16A1 Products</a> )
Background:	Background: extracellular exosome, membrane, 4-trimethylammoniobutyraldehyde dehydrogenase activity, aminobutyraldehyde dehydrogenase activity

## Target Details

Aliases: ALDH16A1 Aldehyde dehydrogenase family 16 member A1 antibody

UniProt: [Q8IZ83](#)

## Application Details

Application Notes: Recommended dilution: IF:1:50-1:200,

Restrictions: For Research Use only

## Handling

Format: Liquid

Buffer: Preservative: 0.03 % Proclin 300  
Constituents: 50 % Glycerol, 0.01M PBS, PH 7.4

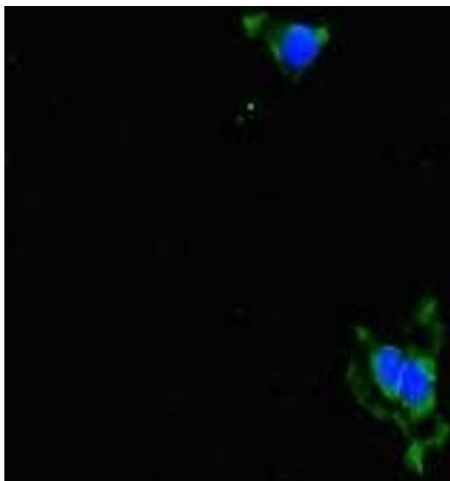
Preservative: ProClin

Precaution of Use: This product contains ProClin: a POISONOUS AND HAZARDOUS SUBSTANCE which should be handled by trained staff only.

Storage: -20 °C, -80 °C

Storage Comment: Upon receipt, store at -20°C or -80°C. Avoid repeated freeze.

## Images



### Immunofluorescence

**Image 1.** Immunofluorescent analysis of HeLa cells using ABIN7143664 at dilution of 1:100 and Alexa Fluor 488-conjugated AffiniPure Goat Anti-Rabbit IgG(H+L)