



[Go to Product page](#)

Datasheet for ABIN7143676
anti-ALDH1B1 antibody (AA 278-517)

3 Images

Overview

Quantity:	100 µL
Target:	ALDH1B1
Binding Specificity:	AA 278-517
Reactivity:	Human
Host:	Rabbit
Clonality:	Polyclonal
Conjugate:	This ALDH1B1 antibody is un-conjugated
Application:	Western Blotting (WB), ELISA, Immunohistochemistry (IHC)

Product Details

Immunogen:	Recombinant Human Aldehyde dehydrogenase X, mitochondrial protein (278-517AA)
Isotype:	IgG
Cross-Reactivity:	Human, Rat
Purification:	Antigen Affinity Purified

Target Details

Target:	ALDH1B1
Alternative Name:	ALDH1B1 (ALDH1B1 Products)
Background:	Background: ALDHs play a major role in the detoxification of alcohol-derived acetaldehyde. They are involved in the metabolism of corticosteroids, biogenic amines, neurotransmitters, and

Target Details

lipid peroxidation.

Aliases: Acetaldehyde dehydrogenase 5 antibody, AL1B1_HUMAN antibody, Aldehyde dehydrogenase 1 family, member B1 antibody, Aldehyde dehydrogenase 1B1 antibody, Aldehyde dehydrogenase 5 antibody, Aldehyde dehydrogenase family 1 member B1 antibody, Aldehyde dehydrogenase X antibody, Aldehyde dehydrogenase X mitochondrial antibody, ALDH class 2 antibody, Aldh1b1 antibody, ALDH5 antibody, ALDHX antibody, MGC2230 antibody, Mitochondrial aldehyde dehydrogenase X antibody, mitochondrial antibody, OTTHUMP00000021399 antibody

UniProt: [P30837](#)

Application Details

Application Notes: Recommended dilution: WB:1:500-1:2000, IHC:1:20-1:200,

Restrictions: For Research Use only

Handling

Format: Liquid

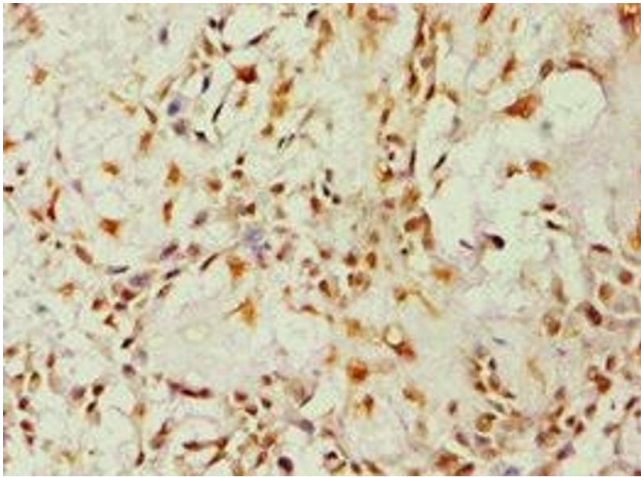
Buffer: PBS with 0.02 % sodium azide, 50 % glycerol, pH 7.3.

Preservative: Sodium azide

Precaution of Use: This product contains Sodium azide: a POISONOUS AND HAZARDOUS SUBSTANCE which should be handled by trained staff only.

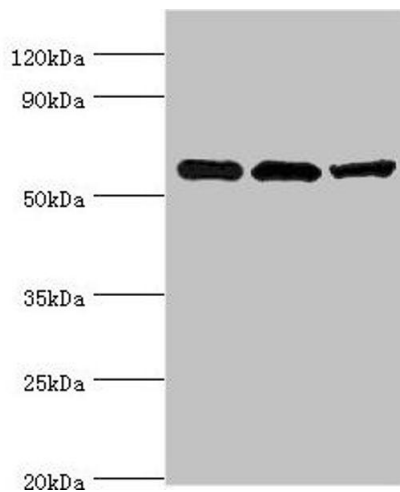
Storage: -20 °C,-80 °C

Storage Comment: Upon receipt, store at -20°C or -80°C. Avoid repeated freeze.



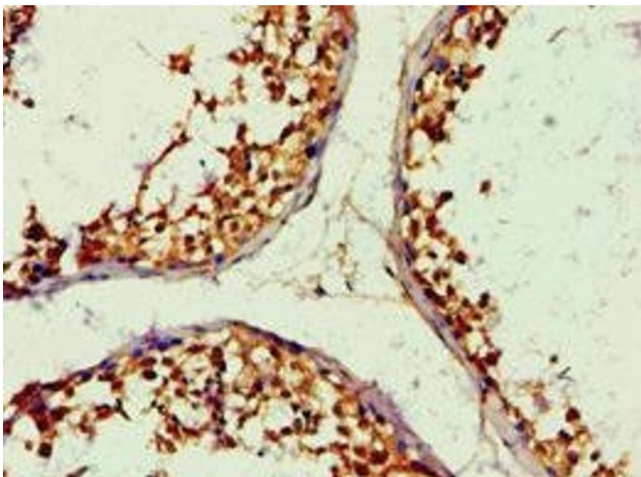
Immunohistochemistry

Image 1. Immunohistochemistry of paraffin-embedded human breast cancer using ABIN7143676 at dilution of 1:100



Western Blotting

Image 2. Western blot All lanes: Aldehyde dehydrogenase X, mitochondrial antibody at 4 µg/mL Lane 1: HeLa whole cell lysate Lane 2: Rat brain tissue Lane 3: HepG2 whole cell lysate Secondary Goat polyclonal to rabbit IgG at 1/10000 dilution Predicted band size: 57 kDa Observed band size: 57 kDa



Immunohistochemistry

Image 3. Immunohistochemistry of paraffin-embedded human testis tissue using ABIN7143676 at dilution of 1:100