



[Go to Product page](#)

Datasheet for ABIN7143677

anti-ALDH3A1 antibody (AA 210-453)

4 Images

Overview

| | |
|----------------------|---|
| Quantity: | 100 µg |
| Target: | ALDH3A1 |
| Binding Specificity: | AA 210-453 |
| Reactivity: | Human |
| Host: | Rabbit |
| Clonality: | Polyclonal |
| Conjugate: | This ALDH3A1 antibody is un-conjugated |
| Application: | Western Blotting (WB), ELISA, Immunohistochemistry (IHC), Immunofluorescence (IF) |

Product Details

| | |
|-------------------|---|
| Immunogen: | Recombinant Human Aldehyde dehydrogenase, dimeric NADP-preferring protein (210-453AA) |
| Isotype: | IgG |
| Cross-Reactivity: | Human |
| Purification: | >95%, Protein G purified |

Target Details

| | |
|-------------------|--|
| Target: | ALDH3A1 |
| Alternative Name: | ALDH3A1 (ALDH3A1 Products) |
| Background: | Background: ALDHs play a major role in the detoxification of alcohol-derived acetaldehyde. They are involved in the metabolism of corticosteroids, biogenic amines, neurotransmitters, and |

Target Details

lipid peroxidation. This protein preferentially oxidizes aromatic aldehyde substrates. It may play a role in the oxidation of toxic aldehydes.

Aliases: Acetaldehyde dehydrogenase 3 antibody, AHD 4 antibody, AHD C antibody, AHD4 antibody, AHDC antibody, AL3A1_HUMAN antibody, Aldehyde dehydrogenase 3 antibody, Aldehyde dehydrogenase 3 family member A1 antibody, Aldehyde dehydrogenase 3A1 antibody, Aldehyde dehydrogenase antibody, Aldehyde dehydrogenase class 3 antibody, Aldehyde dehydrogenase dimeric NADP preferring antibody, Aldehyde dehydrogenase family 3 member A1 antibody, Aldehyde dehydrogenase family 3 subfamily A1 antibody, Aldehyde dehydrogenase family 3, subfamily A, member 1 antibody, Aldehyde dehydrogenase isozyme 3 antibody, Aldehyde dehydrogenase type III antibody, ALDH 3 antibody, ALDH 3A1 antibody, ALDH III antibody, ALDH, stomach type antibody, ALDH3 A1 antibody, ALDH3 antibody, ALDH3A1 antibody, Aldh3a1 antibody, ALDHIII antibody, dimeric NADP-preferring antibody, MGC10406 antibody, Stomach aldehyde dehydrogenase antibody, Tumor associated aldehyde dehydrogenase tumor ALDH antibody

UniProt: [P30838](#)

Application Details

Application Notes: Recommended dilution: WB:1:200-1:2000, IHC:1:20-1:200, IF:1:50-1:200,

Restrictions: For Research Use only

Handling

Format: Liquid

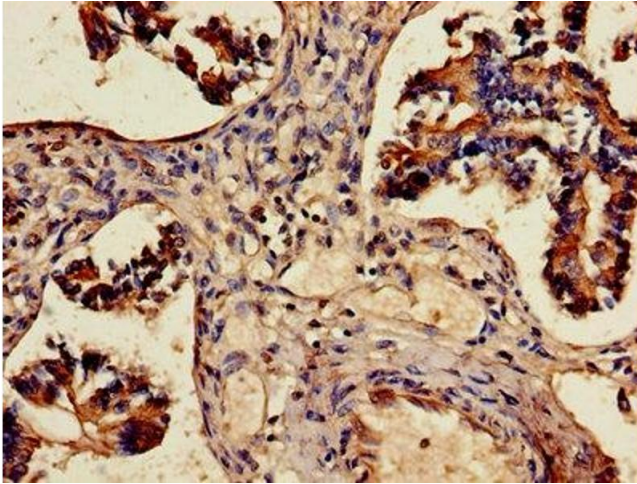
Buffer: Preservative: 0.03 % Proclin 300
Constituents: 50 % Glycerol, 0.01M PBS, PH 7.4

Preservative: ProClin

Precaution of Use: This product contains ProClin: a POISONOUS AND HAZARDOUS SUBSTANCE which should be handled by trained staff only.

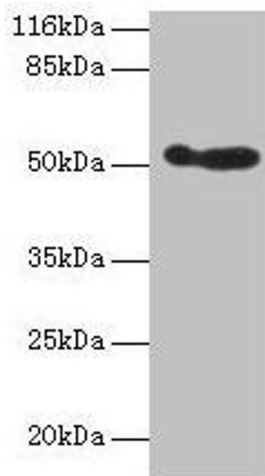
Storage: -20 °C,-80 °C

Storage Comment: Upon receipt, store at -20°C or -80°C. Avoid repeated freeze.



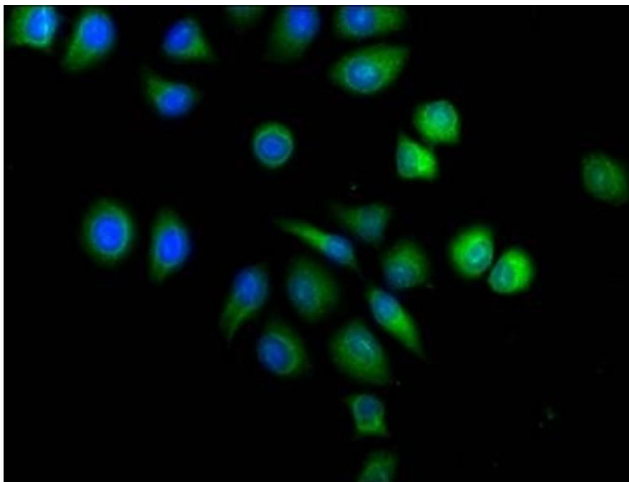
Immunohistochemistry

Image 1. Immunohistochemistry of paraffin-embedded human lung tissue using ABIN7143677 at dilution of 1:100



Western Blotting

Image 2. Western blot All lanes: ALDH3A1 antibody at 2 μ g/mL + 293T whole cell lysate Secondary Goat polyclonal to rabbit IgG at 1/10000 dilution Predicted band size: 51 kDa Observed band size: 51 kDa



Immunofluorescence

Image 3. Immunofluorescence staining of A549 cells with ABIN7143677 at 1:120, counter-stained with DAPI. The cells were fixed in 4% formaldehyde, permeabilized using 0.2% Triton X-100 and blocked in 10% normal Goat Serum. The cells were then incubated with the antibody overnight at 4°C. The secondary antibody was Alexa Fluor 488-conjugated AffiniPure Goat Anti-Rabbit IgG (H+L).

Please check the [product details page](#) for more images. Overall 4 images are available for ABIN7143677.