

Datasheet for ABIN7143742  
**anti-ORM1 antibody (AA 19-201)**[Go to Product page](#)

## 1 Image

## Overview

Quantity:	100 µg
Target:	ORM1
Binding Specificity:	AA 19-201
Reactivity:	Human
Host:	Rabbit
Clonality:	Polyclonal
Conjugate:	This ORM1 antibody is un-conjugated
Application:	Immunohistochemistry (IHC), ELISA

## Product Details

Immunogen:	Recombinant Human Alpha-1-acid glycoprotein 1 protein (19-201AA)
Isotype:	IgG
Cross-Reactivity:	Human
Purification:	>95%, Protein G purified

## Target Details

Target:	ORM1
Alternative Name:	ORM1 ( <a href="#">ORM1 Products</a> )
Background:	Background: Functions as transport protein in the blood stream. Binds various ligands in the interior of its beta-barrel domain. Also binds synthetic drugs and influences their distribution

## Target Details

and availability in the body. Appears to function in modulating the activity of the immune system during the acute-phase reaction.

Aliases: A1AG1\_HUMAN antibody, AGP 1 antibody, AGP A antibody, AGP antibody, AGP1 antibody, Alpha 1 acid glycoprotein antibody, Alpha-1-acid glycoprotein 1 antibody, alpha-1-AGP antibody, Epididymis secretory sperm binding protein Li 153w antibody, glycoprotein, alpha-1-acid, of serum antibody, HEL S 153w antibody, OMD 1 antibody, ORM antibody, ORM1 antibody, Orosomucoid 1 antibody, Orosomucoid-1 antibody

UniProt: [P02763](#)

Pathways: [Response to Growth Hormone Stimulus](#)

## Application Details

Application Notes: Recommended dilution: IHC:1:20-1:200,

Restrictions: For Research Use only

## Handling

Format: Liquid

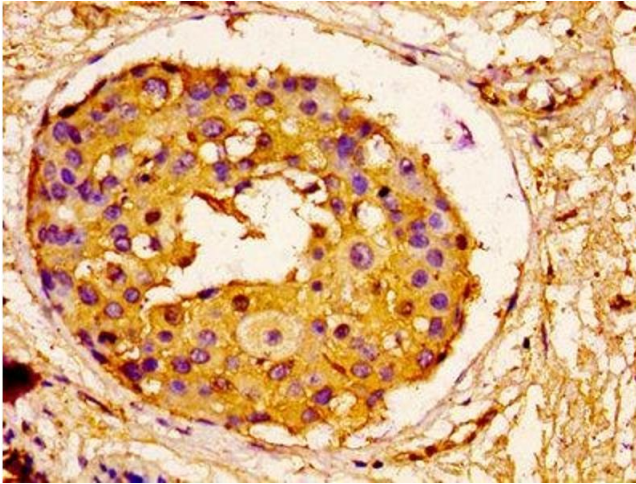
Buffer: Preservative: 0.03 % Proclin 300  
Constituents: 50 % Glycerol, 0.01M PBS, PH 7.4

Preservative: ProClin

Precaution of Use: This product contains ProClin: a POISONOUS AND HAZARDOUS SUBSTANCE which should be handled by trained staff only.

Storage: -20 °C,-80 °C

Storage Comment: Upon receipt, store at -20°C or -80°C. Avoid repeated freeze.



#### Immunohistochemistry

**Image 1.** IHC image of ABIN7143742 diluted at 1:100 and staining in paraffin-embedded human breast cancer performed on a Leica Bond™ system. After dewaxing and hydration, antigen retrieval was mediated by high pressure in a citrate buffer (pH 6.0). Section was blocked with 10% normal goat serum 30min at RT. Then primary antibody (1% BSA) was incubated at 4°C overnight. The primary is detected by a biotinylated secondary antibody and visualized using an HRP conjugated SP system.