



Datasheet for ABIN7143790

## anti-alpha 2 Macroglobulin antibody (AA 1216-1467)



[Go to Product page](#)

### 3 Images

#### Overview

Quantity:	100 µg
Target:	alpha 2 Macroglobulin (A2M)
Binding Specificity:	AA 1216-1467
Reactivity:	Human
Host:	Rabbit
Clonality:	Polyclonal
Conjugate:	This alpha 2 Macroglobulin antibody is un-conjugated
Application:	ELISA, Immunohistochemistry (IHC), Immunofluorescence (IF)

#### Product Details

Immunogen:	Recombinant Human Alpha-2-macroglobulin protein (1216-1467AA)
Isotype:	IgG
Cross-Reactivity:	Human
Purification:	>95%, Protein G purified

#### Target Details

Target:	alpha 2 Macroglobulin (A2M)
Alternative Name:	A2M ( <a href="#">A2M Products</a> )
Background:	Background: Is able to inhibit all four classes of proteinases by a unique 'trapping' mechanism. This protein has a peptide stretch, called the 'bait region' which contains specific

## Target Details

---

cleavage sites for different proteinases. When a proteinase cleaves the bait region, a conformational change is induced in the protein which traps the proteinase. The entrapped enzyme remains active against low molecular weight substrates (activity against high molecular weight substrates is greatly reduced). Following cleavage in the bait region a thioester bond is hydrolyzed and mediates the covalent binding of the protein to the proteinase. Aliases: A2m antibody, A2MG\_HUMAN antibody, Alpha 2 M antibody, Alpha 2M antibody, Alpha-2-M antibody, Alpha-2-macroglobulin antibody, C3 and PZP-like alpha-2-macroglobulin domain-containing protein 5 antibody, CPAMD5 antibody, DKFZp779B086 antibody, FWP007 antibody, S863 7 antibody

---

UniProt: [P01023](#)

---

Pathways: [Lipid Metabolism](#)

## Application Details

---

Application Notes: Recommended dilution: IHC:1:20-1:200, IF:1:50-1:200,

---

Restrictions: For Research Use only

## Handling

---

Format: Liquid

---

Buffer: Preservative: 0.03 % Proclin 300  
Constituents: 50 % Glycerol, 0.01M PBS, PH 7.4

---

Preservative: ProClin

---

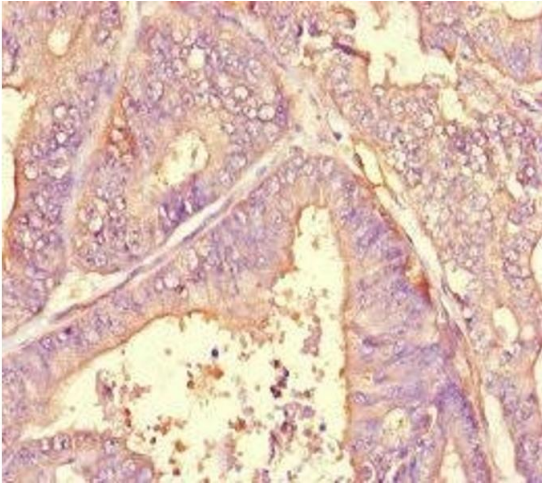
Precaution of Use: This product contains ProClin: a POISONOUS AND HAZARDOUS SUBSTANCE which should be handled by trained staff only.

---

Storage: -20 °C,-80 °C

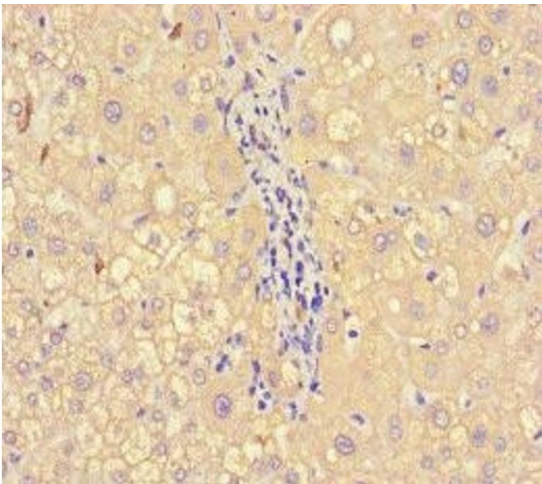
---

Storage Comment: Upon receipt, store at -20°C or -80°C. Avoid repeated freeze.



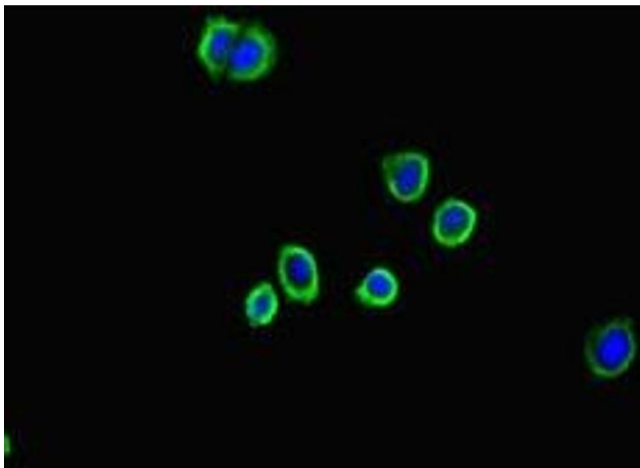
#### Immunohistochemistry

**Image 1.** Immunohistochemistry of paraffin-embedded human endometrial cancer using ABIN7143790 at dilution of 1:100



#### Immunohistochemistry

**Image 2.** Immunohistochemistry of paraffin-embedded human liver tissue using ABIN7143790 at dilution of 1:100



#### Immunofluorescence

**Image 3.** Immunofluorescent analysis of HepG2 cells using ABIN7143790 at dilution of 1:100 and Alexa Fluor 488-conjugated AffiniPure Goat Anti-Rabbit IgG(H+L)