

Datasheet for ABIN7143836

anti-ALDH7A1 antibody (AA 386-515)

5 Images

[Go to Product page](#)

Overview

Quantity:	100 µg
Target:	ALDH7A1
Binding Specificity:	AA 386-515
Reactivity:	Human
Host:	Rabbit
Clonality:	Polyclonal
Conjugate:	This ALDH7A1 antibody is un-conjugated
Application:	Western Blotting (WB), Immunohistochemistry (IHC), ELISA, Immunoprecipitation (IP), Immunofluorescence (IF)

Product Details

Immunogen:	Recombinant Human Alpha-aminoadipic semialdehyde dehydrogenase protein (386-515AA)
Isotype:	IgG
Cross-Reactivity:	Human, Mouse, Rat
Purification:	>95%, Protein G purified

Target Details

Target:	ALDH7A1
Alternative Name:	ALDH7A1 (ALDH7A1 Products)
Background:	Background: Multifunctional enzyme mediating important protective effects. Metabolizes

Target Details

betaine aldehyde to betaine, an important cellular osmolyte and methyl donor. Protects cells from oxidative stress by metabolizing a number of lipid peroxidation-derived aldehydes. Involved in lysine catabolism.

Aliases: 26g turgor protein homolog antibody, AL7A1_HUMAN antibody, Aldehyde dehydrogenase 7 A1 antibody, Aldehyde dehydrogenase 7 family, member A1 antibody, Aldehyde dehydrogenase family 7 member A1 antibody, ALDH7A1 antibody, Alpha AASA dehydrogenase antibody, Alpha aminoadipic semialdehyde dehydrogenase antibody, Alpha-AASA dehydrogenase antibody, Alpha-aminoadipic semialdehyde dehydrogenase antibody, Antiquitin 1 antibody, Antiquitin antibody, Antiquitin-1 antibody, ATQ1 antibody, Betaine aldehyde dehydrogenase antibody, Delta1 piperideine 6 carboxylate dehydrogenase antibody, Delta1-piperideine-6-carboxylate dehydrogenase antibody, EPD antibody, P6c dehydrogenase antibody, PDE antibody

UniProt: [P49419](#)

Pathways: [Sensory Perception of Sound](#)

Application Details

Application Notes: Recommended dilution: WB:1:500-1:5000, IHC:1:200-1:500, IF:1:50-1:200, IP:1:200-1:2000,

Restrictions: For Research Use only

Handling

Format: Liquid

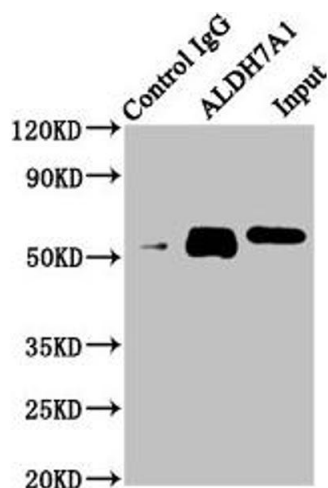
Buffer: Preservative: 0.03 % Proclin 300
Constituents: 50 % Glycerol, 0.01M PBS, pH 7.4

Preservative: ProClin

Precaution of Use: This product contains ProClin: a POISONOUS AND HAZARDOUS SUBSTANCE which should be handled by trained staff only.

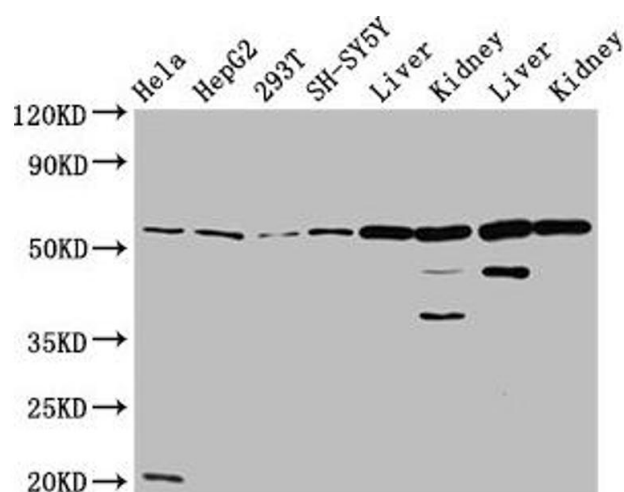
Storage: -20 °C,-80 °C

Storage Comment: Upon receipt, store at -20°C or -80°C. Avoid repeated freeze.



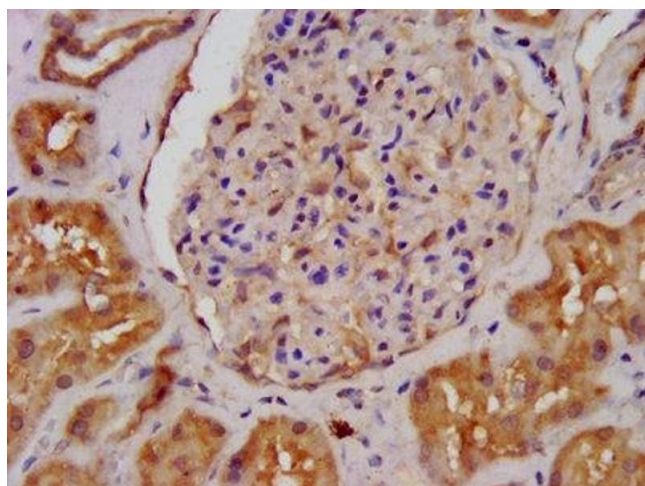
Western Blotting

Image 1. Immunoprecipitating ALDH7A1 in HeLa whole cell lysate Lane 1: Rabbit control IgG instead of ABIN7143836 in HeLa whole cell lysate. For western blotting, a HRP-conjugated Protein G antibody was used as the secondary antibody (1/2000) Lane 2: ABIN7143836 (6 µg) + HeLa whole cell lysate (500 µg) Lane 3: HeLa whole cell lysate (20 µg)



Western Blotting

Image 2. Western Blot Positive WB detected in: HeLa whole cell lysate, HepG2 whole cell lysate, 293T whole cell lysate, SH-SY5Y whole cell lysate, Rat liver tissue, Rat kidney tissue, Mouse liver tissue, Mouse kidney tissue All lanes: ALDH7A1 antibody at 4.7 µg/mL Secondary Goat polyclonal to rabbit IgG at 1/50000 dilution Predicted band size: 59, 56, 52 kDa Observed band size: 59 kDa



Immunohistochemistry

Image 3. IHC image of ABIN7143836 diluted at 1:400 and staining in paraffin-embedded human kidney tissue performed on a Leica Bond™ system. After dewaxing and hydration, antigen retrieval was mediated by high pressure in a citrate buffer (pH 6.0). Section was blocked with 10% normal goat serum 30min at RT. Then primary antibody (1% BSA) was incubated at 4°C overnight. The primary is detected by a biotinylated secondary antibody and visualized using an HRP conjugated SP system.

Please check the [product details page](#) for more images. Overall 5 images are available for ABIN7143836.