

Datasheet for ABIN7143840  
**anti-AASS antibody (AA 224-364)**

## 3 Images

[Go to Product page](#)

## Overview

Quantity:	100 µg
Target:	AASS
Binding Specificity:	AA 224-364
Reactivity:	Human
Host:	Rabbit
Clonality:	Polyclonal
Conjugate:	This AASS antibody is un-conjugated
Application:	Western Blotting (WB), ELISA, Immunohistochemistry (IHC)

## Product Details

Immunogen:	Recombinant Human Alpha-aminoacidic semialdehyde synthase, mitochondrial protein (224-364AA)
Isotype:	IgG
Cross-Reactivity:	Human
Purification:	>95%, Protein G purified

## Target Details

Target:	AASS
Alternative Name:	AASS ( <a href="#">AASS Products</a> )
Background:	Background: Bifunctional enzyme that catalyzes the first two steps in lysine degradation. The

## Target Details

N-terminal and the C-terminal contain lysine-ketoglutarate reductase and saccharopine dehydrogenase activity, respectively.

Aliases: AASSAlpha-aminoadipic semialdehyde synthase antibody, mitochondrial antibody, LKR/SDH) [Includes: Lysine ketoglutarate reductase antibody, LKR antibody, LOR antibody, EC 1.5.1.8), Saccharopine dehydrogenase antibody, SDH antibody, EC 1.5.1.9)] antibody

UniProt: [Q9UDR5](#)

Pathways: [SARS-CoV-2 Protein Interactome](#)

## Application Details

Application Notes: Recommended dilution: WB:1:500-1:5000, IHC:1:200-1:500,

Restrictions: For Research Use only

## Handling

Format: Liquid

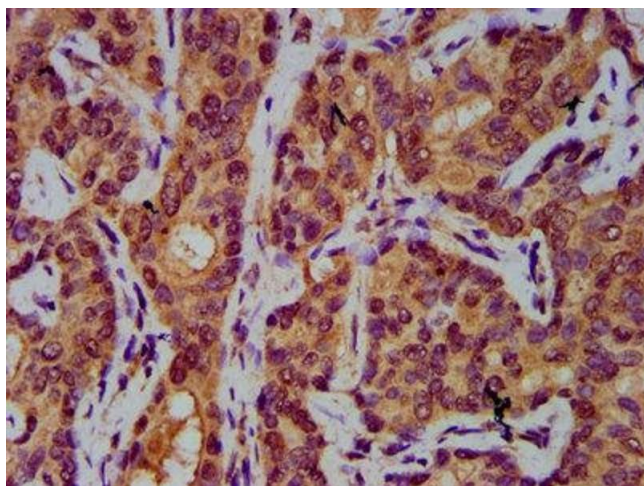
Buffer: Preservative: 0.03 % Proclin 300  
Constituents: 50 % Glycerol, 0.01M PBS, pH 7.4

Preservative: ProClin

Precaution of Use: This product contains ProClin: a POISONOUS AND HAZARDOUS SUBSTANCE which should be handled by trained staff only.

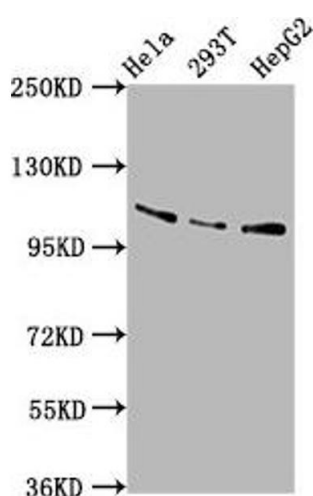
Storage: -20 °C,-80 °C

Storage Comment: Upon receipt, store at -20°C or -80°C. Avoid repeated freeze.



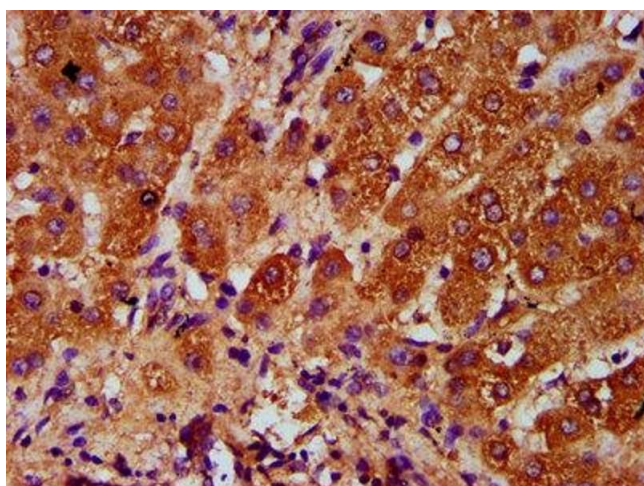
### Immunohistochemistry

**Image 1.** IHC image of ABIN7143840 diluted at 1:400 and staining in paraffin-embedded human liver cancer performed on a Leica Bond™ system. After dewaxing and hydration, antigen retrieval was mediated by high pressure in a citrate buffer (pH 6.0). Section was blocked with 10% normal goat serum 30min at RT. Then primary antibody (1% BSA) was incubated at 4°C overnight. The primary is detected by a biotinylated secondary antibody and visualized using an HRP conjugated SP system.



### Western Blotting

**Image 2.** Western Blot Positive WB detected in: HeLa whole cell lysate, 293T whole cell lysate, HepG2 whole cell lysate. All lanes: AASS antibody at 5.8 µg/mL. Secondary Goat polyclonal to rabbit IgG at 1/50000 dilution. Predicted band size: 103 kDa. Observed band size: 103 kDa.



### Immunohistochemistry

**Image 3.** IHC image of ABIN7143840 diluted at 1:400 and staining in paraffin-embedded human liver tissue performed on a Leica Bond™ system. After dewaxing and hydration, antigen retrieval was mediated by high pressure in a citrate buffer (pH 6.0). Section was blocked with 10% normal goat serum 30min at RT. Then primary antibody (1% BSA) was incubated at 4°C overnight. The primary is detected by a biotinylated secondary antibody and visualized using an HRP conjugated SP system.