

Datasheet for ABIN7143857  
**anti-CRYAB antibody (AA 1-175)**

## 4 Images

[Go to Product page](#)

## Overview

Quantity:	100 µg
Target:	CRYAB
Binding Specificity:	AA 1-175
Reactivity:	Human
Host:	Rabbit
Clonality:	Polyclonal
Application:	Western Blotting (WB), ELISA, Immunohistochemistry (IHC), Immunofluorescence (IF)

## Product Details

Immunogen:	Recombinant Human Alpha-crystallin B chain protein (1-175AA)
Isotype:	IgG
Cross-Reactivity:	Human, Mouse, Rat
Purification:	>95%, Protein G purified

## Target Details

Target:	CRYAB
Alternative Name:	CRYAB ( <a href="#">CRYAB Products</a> )
Background:	<p>Background: May contribute to the transparency and refractive index of the lens. Has chaperone-like activity, preventing aggregation of various proteins under a wide range of stress conditions.</p> <p>Aliases: AACRYA antibody, Alpha B crystallin antibody, Alpha crystallin B chain antibody,</p>

## Target Details

Alpha(B)-crystallin antibody, Alpha-crystallin B chain antibody, CRYA2 antibody, Cryab antibody, CRYAB\_HUMAN antibody, Crystallin alpha B antibody, Crystallin alpha polypeptide 2 antibody, CTPP2 antibody, Heat shock 20 kD like protein antibody, Heat shock protein beta 5 antibody, Heat shock protein beta-5 antibody, HspB5 antibody, Renal carcinoma antigen NY REN 27 antibody, Renal carcinoma antigen NY-REN-27 antibody, Rosenthal fiber component antibody

UniProt: [P02511](#)

## Application Details

Application Notes: Recommended dilution: WB:1:500-1:5000, IHC:1:200-1:500, IF:1:50-1:200,

Restrictions: For Research Use only

## Handling

Format: Liquid

Buffer: Preservative: 0.03 % Proclin 300  
Constituents: 50 % Glycerol, 0.01M PBS, PH 7.4

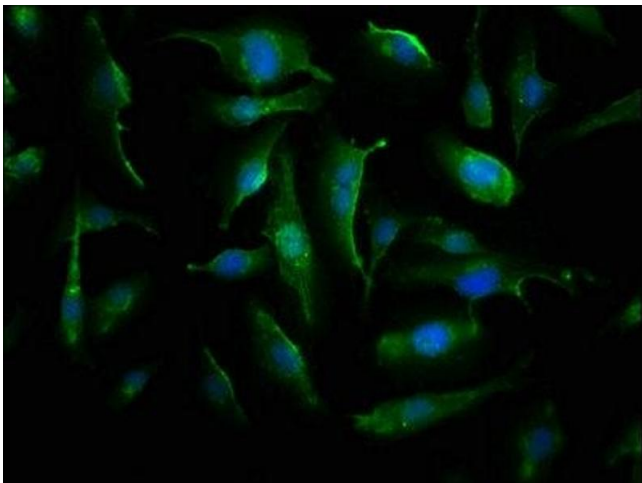
Preservative: ProClin

Precaution of Use: This product contains ProClin: a POISONOUS AND HAZARDOUS SUBSTANCE which should be handled by trained staff only.

Storage: -20 °C,-80 °C

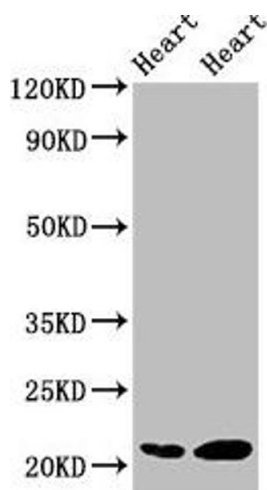
Storage Comment: Upon receipt, store at -20°C or -80°C. Avoid repeated freeze.

## Images



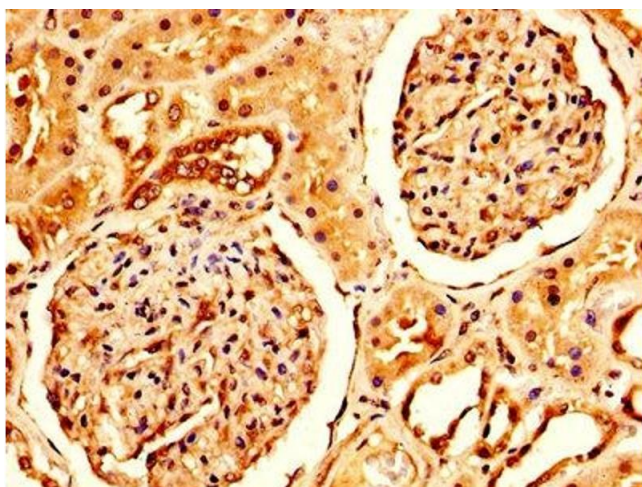
### Immunofluorescence

**Image 1.** Immunofluorescence staining of U251 cells with ABIN7143857 at 1:66, counter-stained with DAPI. The cells were fixed in 4% formaldehyde, permeabilized using 0.2% Triton X-100 and blocked in 10% normal Goat Serum. The cells were then incubated with the antibody overnight at 4°C. The secondary antibody was Alexa Fluor 488-conjugated AffiniPure Goat Anti-Rabbit IgG(H+L).



### Western Blotting

**Image 2.** Western Blot Positive WB detected in: Rat heart tissue, Mouse heart tissue All lanes: CRYAB antibody at 2  $\mu$ g/mL Secondary Goat polyclonal to rabbit IgG at 1/50000 dilution Predicted band size: 21 kDa Observed band size: 21 kDa



### Immunohistochemistry

**Image 3.** IHC image of ABIN7143857 diluted at 1:200 and staining in paraffin-embedded human kidney tissue performed on a Leica Bond<sup>TM</sup> system. After dewaxing and hydration, antigen retrieval was mediated by high pressure in a citrate buffer (pH 6.0). Section was blocked with 10% normal goat serum 30min at RT. Then primary antibody (1% BSA) was incubated at 4°C overnight. The primary is detected by a biotinylated secondary antibody and visualized using an HRP conjugated SP system.

Please check the [product details page](#) for more images. Overall 4 images are available for ABIN7143857.