

Datasheet for ABIN7143865
anti-ENO1 antibody (AA 2-428)[Go to Product page](#)

4 Images

Overview

Quantity:	100 µg
Target:	ENO1
Binding Specificity:	AA 2-428
Reactivity:	Human
Host:	Rabbit
Clonality:	Polyclonal
Conjugate:	This ENO1 antibody is un-conjugated
Application:	Western Blotting (WB), ELISA, Immunohistochemistry (IHC), Immunofluorescence (IF)

Product Details

Immunogen:	Recombinant Human Alpha-enolase protein (2-428AA)
Isotype:	IgG
Cross-Reactivity:	Human, Mouse
Purification:	>95%, Protein G purified

Target Details

Target:	ENO1
Alternative Name:	ENO1 (ENO1 Products)
Background:	Background: ENO1 encodes one of three enolase isoenzymes found in mammals, it encodes alpha-enolase, a homodimeric soluble enzyme, and also encodes a shorter monomeric

Target Details

structural lens protein, tau-crystallin. The two proteins are made from the same message. The full length protein, the isoenzyme, is found in the cytoplasm. The shorter protein is produced from an alternative translation start, is localized to the nucleus, and has been found to bind to an element in the c-myc promoter. A pseudogene has been identified that is located on the other arm of the same chromosome.

Aliases: 2 phospho D glycerate hydro lyase antibody, 2-phospho-D-glycerate hydro-lyase antibody, Alpha enolase antibody, Alpha enolase like 1 antibody, Alpha-enolase antibody, C myc promoter binding protein antibody, C-myc promoter-binding protein antibody, EC 4.2.1.11 antibody, eno1 antibody, ENO1L1 antibody, ENOA_HUMAN antibody, Enolase 1 (alpha) antibody, Enolase 1 (alpha) like 1 antibody, Enolase 1 antibody, Enolase alpha antibody, MBP 1 antibody, MBP-1 antibody, MBP1 antibody, MBPB1 antibody, MPB 1 antibody, MPB-1 antibody, MPB1 antibody, MYC promoter binding protein 1 antibody, NNE antibody, Non neural enolase antibody, Non-neural enolase antibody, Phosphopyruvate hydratase antibody, Plasminogen binding protein antibody, Plasminogen-binding protein antibody, PPH antibody, Tau crystallin antibody

UniProt: [P06733](#)

Application Details

Application Notes: Recommended dilution: WB:1:500-1:5000, IHC:1:20-1:200, IF:1:50-1:200,

Restrictions: For Research Use only

Handling

Format: Liquid

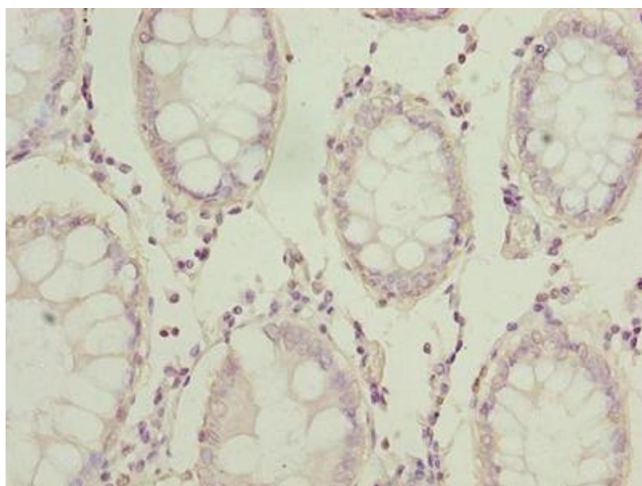
Buffer: Preservative: 0.03 % Proclin 300
Constituents: 50 % Glycerol, 0.01M PBS, PH 7.4

Preservative: ProClin

Precaution of Use: This product contains ProClin: a POISONOUS AND HAZARDOUS SUBSTANCE which should be handled by trained staff only.

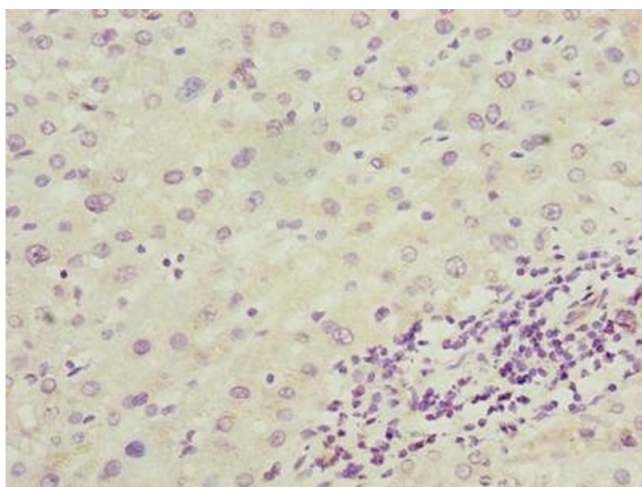
Storage: -20 °C,-80 °C

Storage Comment: Upon receipt, store at -20°C or -80°C. Avoid repeated freeze.



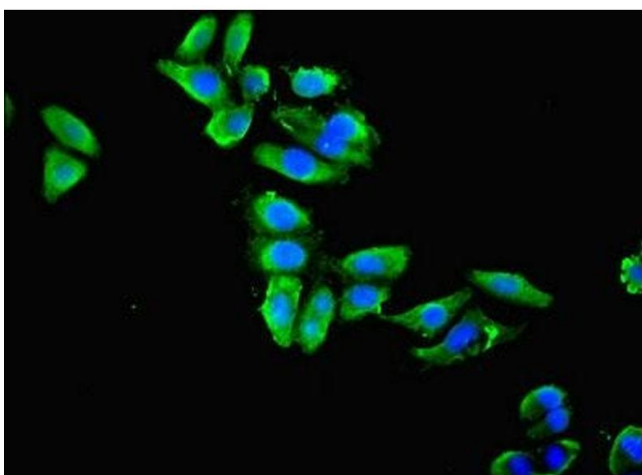
Immunohistochemistry

Image 1. Immunohistochemistry of paraffin-embedded human colon cancer using ABIN7143865 at dilution of 1:100



Immunohistochemistry

Image 2. Immunohistochemistry of paraffin-embedded human liver cancer using ABIN7143865 at dilution of 1:100



Immunofluorescence

Image 3. Immunofluorescent analysis of HepG2 cells using ABIN7143865 at dilution of 1:100 and Alexa Fluor 488-conjugated AffiniPure Goat Anti-Rabbit IgG(H+L)

Please check the [product details page](#) for more images. Overall 4 images are available for ABIN7143865.