



[Go to Product page](#)

Datasheet for ABIN7143883
anti-TFCP2 antibody (AA 1-280)

3 Images

Overview

Quantity:	100 µL
Target:	TFCP2
Binding Specificity:	AA 1-280
Reactivity:	Human
Host:	Rabbit
Clonality:	Polyclonal
Conjugate:	This TFCP2 antibody is un-conjugated
Application:	Western Blotting (WB), ELISA, Immunohistochemistry (IHC)

Product Details

Immunogen:	Recombinant Human Alpha-globin transcription factor CP2 protein (1-280AA)
Isotype:	IgG
Cross-Reactivity:	Human, Mouse
Purification:	Antigen Affinity Purified

Target Details

Target:	TFCP2
Alternative Name:	TFCP2 (TFCP2 Products)
Background:	Background: Binds a variety of cellular and viral promoters including fibrinogen, alpha-globin, SV40 and HIV-1 promoters. Activation of the alpha-globin promoter in erythroid cells is via

Target Details

synergistic interaction with UBP1 (By similarity). Functions as part of the SSP (stage selector protein) complex. Facilitates the interaction of the gamma-globin genes with enhancer elements contained in the locus control region in fetal erythroid cells. Interacts by binding to the stage selector element (SSE) in the proximal gamma-globin promoter.

Aliases: Alpha globin transcription factor CP2 antibody, Alpha-globin transcription factor CP2 antibody, CP2 antibody, Late SV40 factor antibody, LBP 1C antibody, LBP1C antibody, LSF antibody, LSF1D antibody, SAA3 enhancer factor antibody, SEF antibody, TFCP2 antibody, TFCP2_HUMAN antibody, TFCP2C antibody, Transcription factor CP2 antibody, Transcription factor LSF antibody

UniProt: [Q12800](#)

Application Details

Application Notes: Recommended dilution: WB:1:1000-1:5000, IHC:1:20-1:200,

Restrictions: For Research Use only

Handling

Format: Liquid

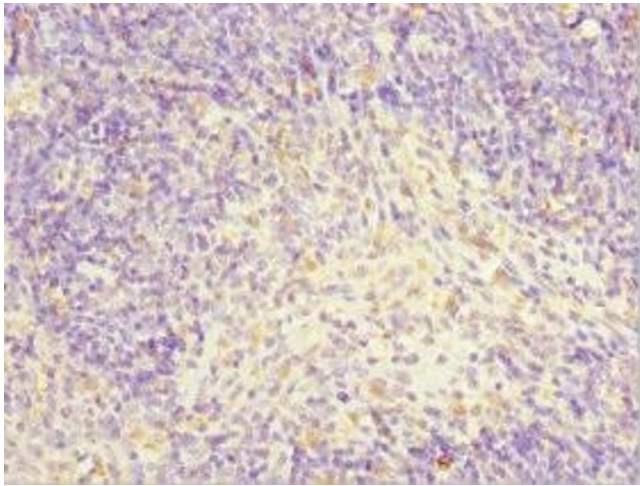
Buffer: PBS with 0.02 % sodium azide, 50 % glycerol, pH 7.3.

Preservative: Sodium azide

Precaution of Use: This product contains Sodium azide: a POISONOUS AND HAZARDOUS SUBSTANCE which should be handled by trained staff only.

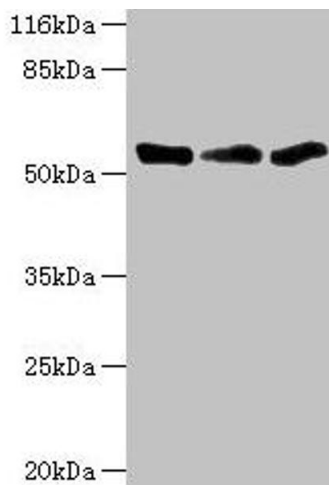
Storage: -20 °C,-80 °C

Storage Comment: Upon receipt, store at -20°C or -80°C. Avoid repeated freeze.



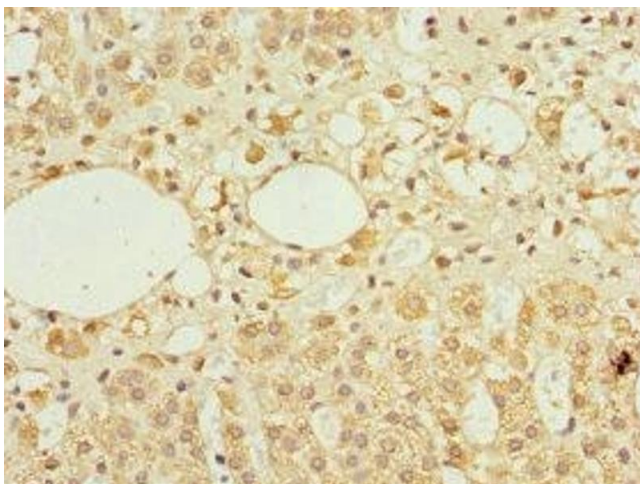
Immunohistochemistry

Image 1. Immunohistochemistry of paraffin-embedded human thymus tissue using ABIN7143883 at dilution of 1:100



Western Blotting

Image 2. Western blot All lanes: TFCEP2 antibody at 1.34 μ g/mL Lane 1: K562 whole cell lysate Lane 2: Mouse spleen tissue Lane 3: THP-1 whole cell lysate Secondary Goat polyclonal to rabbit IgG at 1/10000 dilution Predicted band size: 58, 52 kDa Observed band size: 52 kDa



Immunohistochemistry

Image 3. Immunohistochemistry of paraffin-embedded human adrenal gland tissue using ABIN7143883 at dilution of 1:100