

Datasheet for ABIN7143957  
**anti-ALMS1 antibody (AA 889-1057)**[Go to Product page](#)

## 1 Image

## Overview

Quantity:	100 µL
Target:	ALMS1
Binding Specificity:	AA 889-1057
Reactivity:	Human
Host:	Rabbit
Clonality:	Polyclonal
Conjugate:	This ALMS1 antibody is un-conjugated
Application:	ELISA, Immunofluorescence (IF)

## Product Details

Immunogen:	Recombinant Human Alstrom syndrome protein 1 protein (889-1057AA)
Isotype:	IgG
Cross-Reactivity:	Human
Purification:	>95%, Protein G purified

## Target Details

Target:	ALMS1
Alternative Name:	ALMS1 ( <a href="#">ALMS1 Products</a> )
Background:	Background: Involved in PCM1-dependent intracellular transport. Required, directly or indirectly, for the localization of NCAPD2 to the proximal ends of centrioles. Required for proper formation

## Target Details

and/or maintenance of primary cilia (PC), microtubule-based structures that protrude from the surface of epithelial cells.

Aliases: Alms1 antibody, ALMS1\_HUMAN antibody, ALSS antibody, Alstrom syndrome 1 antibody, Alstrom syndrome protein 1 antibody

UniProt: [Q8TCU4](#)

Pathways: [Sensory Perception of Sound](#), [Carbohydrate Homeostasis](#), [M Phase](#)

## Application Details

Application Notes: Recommended dilution: IF:1:50-1:200,

Restrictions: For Research Use only

## Handling

Format: Liquid

Buffer: Preservative: 0.03 % Proclin 300  
Constituents: 50 % Glycerol, 0.01M PBS, pH 7.4

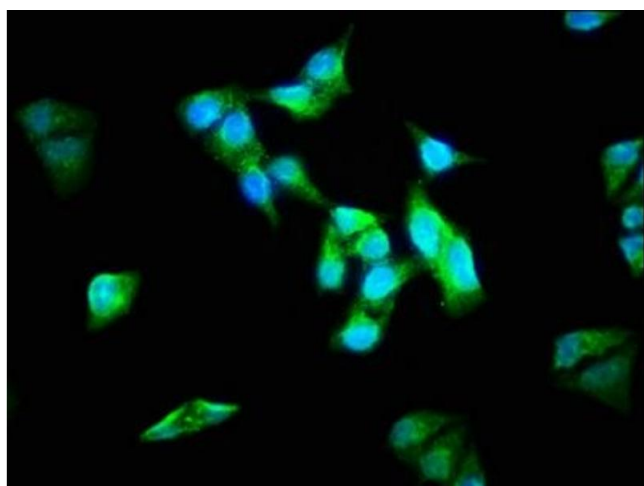
Preservative: ProClin

Precaution of Use: This product contains ProClin: a POISONOUS AND HAZARDOUS SUBSTANCE which should be handled by trained staff only.

Storage: -20 °C,-80 °C

Storage Comment: Upon receipt, store at -20°C or -80°C. Avoid repeated freeze.

## Images



### Immunofluorescence

**Image 1.** Immunofluorescence staining of Hela cells with ABIN7143957 at 1:133, counter-stained with DAPI. The cells were fixed in 4 % formaldehyde, permeabilized using 0.2 % Triton X-100 and blocked in 10 % normal Goat Serum. The cells were then incubated with the antibody overnight at 4 °C. The secondary antibody was Alexa Fluor 488-conjugated AffiniPure Goat Anti-Rabbit IgG(H+L).