

Datasheet for ABIN7143973

## anti-SCNN1B antibody (AA 554-640)



[Go to Product page](#)

### 4 Images

#### Overview

Quantity:	100 µg
Target:	SCNN1B
Binding Specificity:	AA 554-640
Reactivity:	Human
Host:	Rabbit
Clonality:	Polyclonal
Application:	Western Blotting (WB), Immunohistochemistry (IHC), ELISA, Immunofluorescence (IF)

#### Product Details

Immunogen:	Recombinant Human Amiloride-sensitive sodium channel subunit beta protein (554-640AA)
Isotype:	IgG
Cross-Reactivity:	Human
Purification:	>95%, Protein G purified

#### Target Details

Target:	SCNN1B
Alternative Name:	SCNN1B ( <a href="#">SCNN1B Products</a> )
Background:	Background: Sodium permeable non-voltage-sensitive ion channel inhibited by the diuretic amiloride. Mediates the electrodiffusion of the luminal sodium (and water, which follows osmotically) through the apical membrane of epithelial cells. Plays an essential role in electrolyte and blood pressure homeostasis, but also in airway surface liquid homeostasis,

## Target Details

which is important for proper clearance of mucus. Controls the reabsorption of sodium in kidney, colon, lung and sweat glands. Also plays a role in taste perception.

Aliases: Amiloride sensitive sodium channel subunit beta antibody, Amiloride-sensitive sodium channel subunit beta antibody, Beta NaCH antibody, Beta-ENaC antibody, Beta-NaCH antibody, ENaC beta antibody, ENaCB antibody, Epithelial Na(+) channel subunit beta antibody, Epithelial Na+ channel beta subunit antibody, Epithelial Na+ channel subunit beta antibody, Epithelial sodium channel beta 2 subunit antibody, Epithelial sodium channel beta 3 subunit antibody, Nonvoltage gated sodium channel 1 beta subunit antibody, Nonvoltage gated sodium channel 1 subunit beta antibody, Nonvoltage-gated sodium channel 1 subunit beta antibody, SCNEB antibody, SCNN 1B antibody, SCNN1B antibody, SCNNB\_HUMAN antibody, Sodium channel nonvoltage gated 1 beta (Liddle syndrome) antibody, Sodium channel nonvoltage gated 1 beta antibody

UniProt: [P51168](#)

## Application Details

Application Notes: Recommended dilution: WB:1:500-1:5000, IHC:1:200-1:500, IF:1:50-1:200,

Restrictions: For Research Use only

## Handling

Format: Liquid

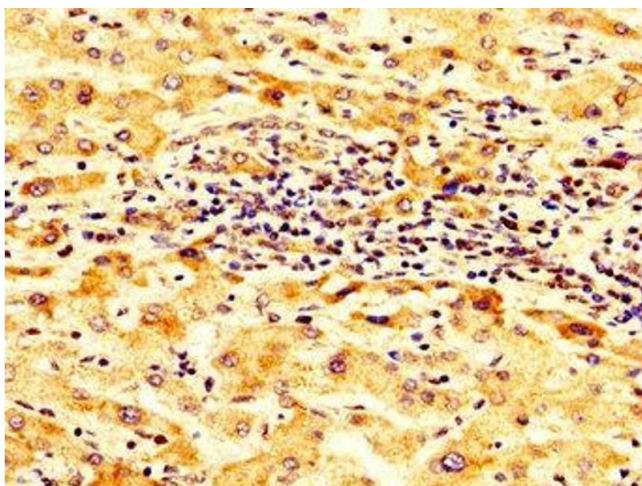
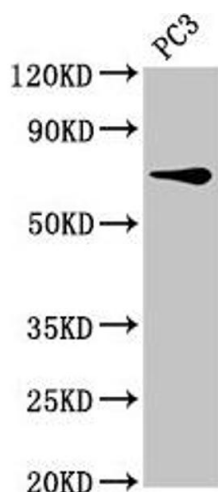
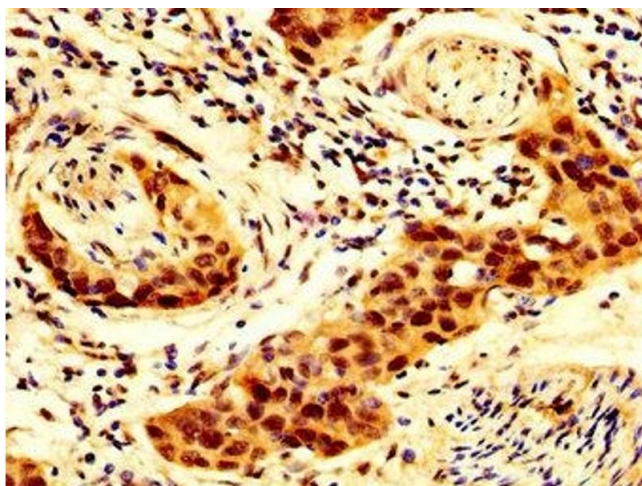
Buffer: Preservative: 0.03 % Proclin 300  
Constituents: 50 % Glycerol, 0.01M PBS, pH 7.4

Preservative: ProClin

Precaution of Use: This product contains ProClin: a POISONOUS AND HAZARDOUS SUBSTANCE which should be handled by trained staff only.

Storage: -20 °C,-80 °C

Storage Comment: Upon receipt, store at -20°C or -80°C. Avoid repeated freeze.



### Immunohistochemistry

**Image 1.** IHC image of ABIN7143973 diluted at 1:300 and staining in paraffin-embedded human bladder cancer performed on a Leica Bond™ system. After dewaxing and hydration, antigen retrieval was mediated by high pressure in a citrate buffer (pH 6.0). Section was blocked with 10% normal goat serum 30min at RT. Then primary antibody (1% BSA) was incubated at 4°C overnight. The primary is detected by a biotinylated secondary antibody and visualized using an HRP conjugated SP system.

### Western Blotting

**Image 2.** Western Blot Positive WB detected in: PC-3 whole cell lysate All lanes: SCNN1B antibody at 8 µg/mL Secondary Goat polyclonal to rabbit IgG at 1/50000 dilution Predicted band size: 73, 78 kDa Observed band size: 73 kDa

### Immunohistochemistry

**Image 3.** IHC image of ABIN7143973 diluted at 1:300 and staining in paraffin-embedded human liver cancer performed on a Leica Bond™ system. After dewaxing and hydration, antigen retrieval was mediated by high pressure in a citrate buffer (pH 6.0). Section was blocked with 10% normal goat serum 30min at RT. Then primary antibody (1% BSA) was incubated at 4°C overnight. The primary is detected by a biotinylated secondary antibody and visualized using an HRP conjugated SP system.

Please check the [product details page](#) for more images. Overall 4 images are available for ABIN7143973.