

Datasheet for ABIN7144001

anti-Aminomethyltransferase antibody (AA 180-260)[Go to Product page](#)**1** Image

Overview

Quantity:	100 µg
Target:	Aminomethyltransferase (AMT)
Binding Specificity:	AA 180-260
Reactivity:	Human
Host:	Rabbit
Clonality:	Polyclonal
Conjugate:	This Aminomethyltransferase antibody is un-conjugated
Application:	Western Blotting (WB), ELISA

Product Details

Immunogen:	Recombinant Human Aminomethyltransferase, mitochondrial protein (180-260AA)
Isotype:	IgG
Cross-Reactivity:	Human, Mouse
Purification:	>95%, Protein G purified

Target Details

Target:	Aminomethyltransferase (AMT)
Alternative Name:	AMT (AMT Products)
Background:	Background: The glycine cleavage system catalyzes the degradation of glycine. Aliases: Aminomethyltransferase (glycine cleavage system protein T) antibody,

Target Details

Aminomethyltransferase antibody, AMT antibody, GCE antibody, GCST antibody, GCST_HUMAN antibody, GCVT antibody, Glycine cleavage system T protein antibody, mitochondrial antibody, NKH antibody

UniProt: [P48728](#)

Application Details

Application Notes: Recommended dilution: WB:1:500-1:5000,

Restrictions: For Research Use only

Handling

Format: Liquid

Buffer: Preservative: 0.03 % Proclin 300
Constituents: 50 % Glycerol, 0.01M PBS, PH 7.4

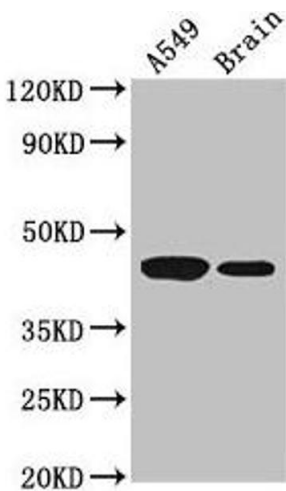
Preservative: ProClin

Precaution of Use: This product contains ProClin: a POISONOUS AND HAZARDOUS SUBSTANCE which should be handled by trained staff only.

Storage: -20 °C,-80 °C

Storage Comment: Upon receipt, store at -20°C or -80°C. Avoid repeated freeze.

Images



Western Blotting

Image 1. Western Blot Positive WB detected in: A549 whole cell lysate, Mouse brain tissue All lanes: AMT antibody at 3.5 µg/mL Secondary Goat polyclonal to rabbit IgG at 1/50000 dilution Predicted band size: 44, 38, 40, 42 kDa Observed band size: 44 kDa